

# Devolinx STE-501C/502C

1/2-Port Ethernet Serial Server



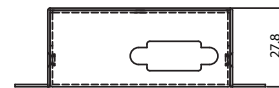
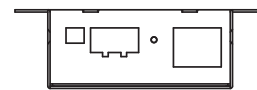
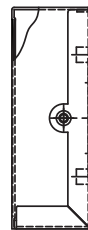
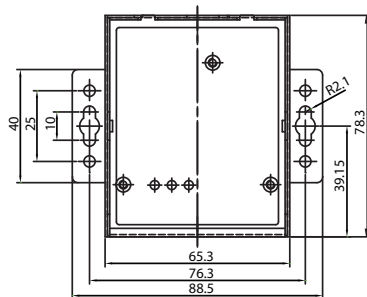
## Features

- ▶ Rugged Metal Case with DIN-Rail / Wall-Mount
- ▶ 15 KV ESD Protection for Serial Signals
- ▶ 10/100Mbps Fast Ethernet Full Duplex Auto Negotiation
- ▶ Supports Multiple Link Mode with TCP Server/Client, UDP, and Virtual COM Mode
- ▶ Monitor, Manage, and Control Industrial Field Devices Remotely
- ▶ Configurable via Built-In Web Server, Serial Console, or Telnet
- ▶ Windows Base Utility for IP Configuration
- ▶ Compact Size
- ▶ Upgradeable Firmware from Remote-PC via Ethernet

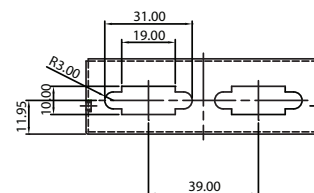
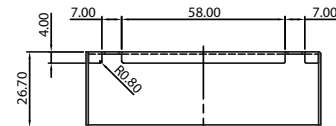
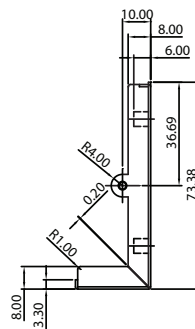
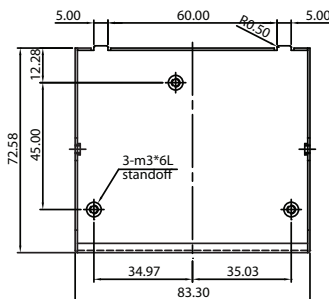


## ▶ Specifications

STE-501C



STE-502C



## ► Specifications

### CPU

16-bit Embedded CPU

### Flash Memory

512 KBytes

### SDRAM

512 KBytes

### EEPROM

512 Bytes

### Network Interface

10/100Mbps Fast Ethernet

### Network Protocol

TCP/IP, UDP, HTTP, SNMP, ARP, Telnet, ICMP, BOOTP, DHCP

### Reset

Built-In Reset Key to Restore Defaults

### Serial Interface

RS-232/422/485

### Serial Connector

DB9 Male

### Serial Communication

Data Rate: 1200 ~ 230400 bps (230Kbps)

Characters: 7 or 8 Data Bits

Parity: None, Even, Odd, Mark, Space

Stop Bits: 1 or 2

Flow Control: Xon/Xoff, RTS/CTS

### LED Indicators

LAN, RUN, and COM

### Software

Windows OS Based Configuration Utility, Virtual COM Software

### Configuration

Web (HTML), Telnet, Serial Console, and Configuration Utility

### Power Requirement

9 ~ 30VDC

### Power Consumption

3 Watts

### Operation Temperature

0° C to 60° C (32° F to 140° F)

### Storage Temperature

-20° C to 85° C (-4° F to 185° F)

### Operation Humidity

20% to 90% (Non-condensing)

### Dimension (W x H x D)

STE-501C: 65 x 80 x 28 mm (2.56 x 3.15 x 1.10 in.)

STE-502C: 85 x 75 x 28 mm (3.35 x 2.95 x 1.10 in.)

### Approvals

FCC, CE

### Warranty

5-Year Warranty

## ► Comparison

Model	STE-501C	STE-502C	STE-601C	STW-601C
Number of Ports	1 Port	2 Ports	1 Port	1 Port
Case Design	Commercial	Commercial	Industrial	Industrial
Flash Memory	512KB	512KB	512KB	10MB (2MB for Bootloader)
SDRAM	512KB	512KB	512KB	32MB
Wireless LAN	No	No	No	Yes
Serial Connector	DB9 Male	DB9 Male	DB9 Male 5 Pin Terminal Block 8 Pin Mini-DIN	DB9 Male 5 Pin Terminal Block 8 Pin Mini-DIN

## ► Ordering Information

### STE-501C

1 Port Ethernet Serial Server, RS-232 / 422 / 485, DIN-Rail/Wall-Mountable

### STE-502C

2 Port Ethernet Serial Server, RS-232 / 422 / 485, DIN-Rail/Wall-Mountable

\*\*\* POWER ADAPTER SOLD SEPARATELY \*\*\*

### Optional Accessories

#### PA-STX-US

Power Adapter for STE-501C (USA)

#### PA-STE502-US

Power Adapter for STE-502C (USA)

#### PA-STX-EU

Power Adapter for STE-501C (Euro)

#### PA-STE502-EU

Power Adapter for STE-502C (Euro)

#### DIN-RAIL-KIT

DIN Rail Mounting Kit