

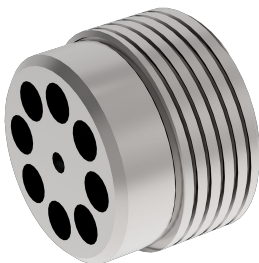
# Lock valve

## Spring-loaded non-return valve

$Q_{\max} = 8 \text{ l/min}$ ,  $p_{\max} = 350 \text{ bar}$

ball type

Type series: RKVG-M-03-...



- Screw-in cartridge valve
- Exceptionally high  $Q_{\max}$  with extremely low  $\Delta p$
- No soft seal, thus not depending on temperature and pressure fluid
- Virtually leak-proof in closed condition
- High pressure rating

### Description

The RKVG series spherical poppet-type check valve is characterized by very high pressure load capacity and extremely low  $\Delta p$ . The valve has a cutting edge for metal-to-metal sealing. By eliminating the soft seal, the valve can be applied without regard to temperature and pressure fluid.

The spring-loaded poppet-type check valve very

robust, extremely leak-proof and insensitive to contamination. Valve seat, poppet and body are hardened. The properties of the sealing faces have been enhanced by precision mechanical processing. The valves prevent flow in the screw-in direction (A to B) and open in the opposite direction. The valve is available in nominal sizes 03, 04, 06, 08, 10 and 16.

### Symbol



### Technical data

| General characteristics | Description, value, unit       |
|-------------------------|--------------------------------|
| Function group          | Lock valve                     |
| Function                | Spring-loaded non-return valve |
| Design                  | Screw-in cartridge valve       |

| General characteristics | Description, value, unit |
|-------------------------|--------------------------|
| Characteristic          | ball type                |
| Construction size       | nominal size 03          |
| Thread size             | M8×0,75                  |
| Mounting attitude       | unrestricted             |
| Weight                  | 0.002 kg                 |
| Tightening torque steel | 8 Nm                     |

| Hydraulic characteristics   | Description, value, unit  |
|---|---|
| Maximum operating pressure  | 350 bar   |
| Maximum flow rate   | 8 l/min   |
| Nominal flow rate   | 6 l/min   |
| Flow direction  | see symbol  |
| Hydraulic fluid   | HL and HLP mineral oil according to DIN 51 524;<br>other fluids on request! |
| Minimum fluid temperature   | - 30 °C   |
| Maximum fluid temperature   | + 80 °C   |
| Viscosity range   | 10 ... 500 mm <sup>2</sup> /s (cSt)   |
| Minimum fluid cleanliness<br>(cleanliness class according to ISO 4406:1999) | class 20/18/15  |
| Opening pressure  | 0.2 / 0.5 bar   |



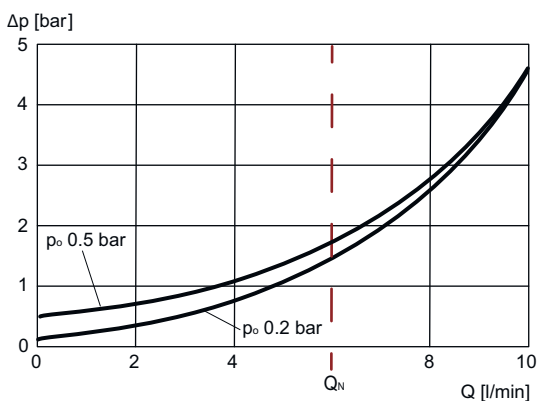
**NOTE!**

For other values please contact Bucher Hydraulics.

## Performance graphs

measured with oil viscosity 33.0 mm<sup>2</sup>/s (cSt)

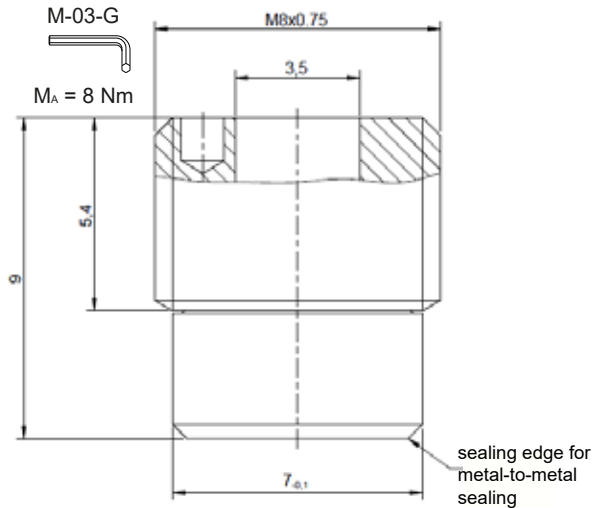
$\Delta p = f(Q)$  Pressure drop-flow rate characteristic



## Dimensions and sectional view

### RKVG-M-03

The dimensions specified apply to the mounted state.



For cavity REG-02

## Installation information



### NOTE!

When fitting the screw-in cartridge valve, use the specified tightening torque. The value can be found in the chapter "Technical data". Orifices or nozzles are to be placed after the check valve. If this is not possible, a right-angled bore must be designated between the check valve and the nozzle. (see data sheet 170-P-059000). Suitable fitting tools are available at Bucher Hydraulics (see data sheet 170-P-051600).



### ATTENTION!

When fitting the valve, make sure that it is firmly seated on the sealing surface and that it is not deformed by the use of excessive force.

## Application Notes



### ATTENTION!

The valves are only suitable for pressure relief in the opening direction to a limited extent. (if necessary, please consult Bucher Hydraulics).



### NOTE!

The maximum operating pressure must not be exceeded even when pressure peaks occur. In applications such as accumulator circuits, where sudden pressure can be applied to the valve in the free-flow direction, ensure that the specified flow ratings are not exceeded. Buyers bear the sole responsibility for ensuring that the valve is suitable for their applications and must be substantiated by trials or testing, if necessary.

## Ordering code

Ex. RKVG - M - 03 - 02

RKVG = check valve, screw-in type, spherical poppet,  
(no-flow direction opposite to screw-in direction)

M = screw-in thread M8x0,75

03 = nominal size 03, Q<sub>Nominal</sub> 6 l/min

02 = opening pressure 0,2 bar (Item no.: 170628701)

05 = opening pressure 0,5 bar (Item no.: 170628700)

## Related data sheets

| Reference                    | Description                                    |
|------------------------------|--|
| <a href="#">170-P-059000</a> | Using nozzles or orifices before a Check Valve |
| <a href="#">170-P-080015</a> | Cavity REG-02-03-M                             |