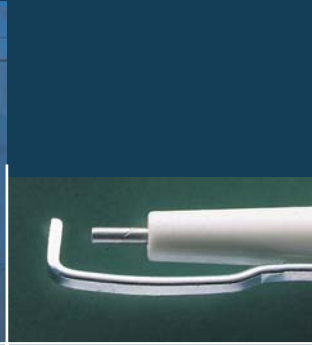


Special Spark Plugs
Ignition Ele



Ignition Electrodes and Special Spark Plugs

Ignition Electrode
Special Spark Plugs

Perfection
built in

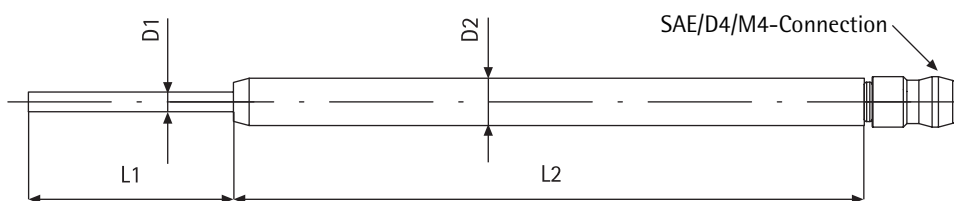


Beru Ignition Electrodes – Quality Under One Roof

Due to decades of experience in vehicle and heating ignition systems, Beru has become the leader in the industry and is continually improving ignition electrodes. One example of this continuing improvement is the ceramic body, specially developed to provide fracture stability and dielectric strength. Other examples are the gas-sealed electrode and the 2-part center electrode, which is reinforced through glass sealing and has a particularly high mechanical strength. Another improvement is the elongation and distortion resistance of the center electrodes in the ceramic body. The examples could go on and on.

We will be happy to give you a presentation of a cross-sectional sample of our development expertise including spark plugs for gas-powered engines. To produce special and small series, we use our sample workshops, which are modernly equipped and flexible. If you are interested in individual ignition electrode components, discuss it with us; we'll make you an attractive offer.

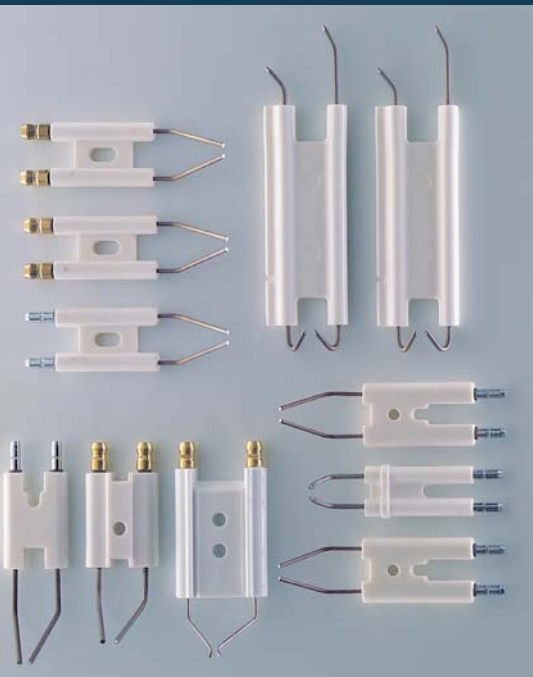
◀ The Beru individual ignition electrode range



Length, diameter, wiring material and insulator material on demand.

We will be pleased to provide you with an offer for bent electrodes in accordance with your specifications.

◀ The basis of our double ignition electrode program



Sheet electrodes

Some examples of our sheet electrode production program

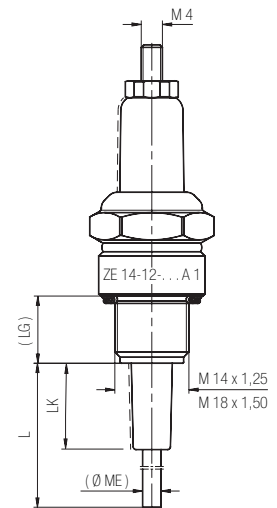


Beru Special Ignition Electrodes – also suitable for special applications such as level and temperature monitoring

The ZE special spark plugs with single electrodes

Description	Thread (mm)	Thread length LG (mm)	Length L (mm)	Material Center Electrode	ø Center Electrode (mm)	Order No.
ZE 14-8-70 A1	M 14x1.25	8	70	Kanthal A1	2.5	0 009 350 028
ZE 14-8-250 A1	"	8	250	"	2.5	0 009 350 025
ZE 14-8-400 A1	"	8	400	"	2.5	0 009 350 026
* ZE 14-12-35 A1	"	12	35	"	3.5	0 009 340 040
* ZE 14-12-66 A1	"	12	66	"	"	0 009 340 094
ZE 14-12-100 A1	"	12	100	"	"	0 009 340 041
ZE 14-12-150 A1	"	12	150	"	"	0 009 340 045
* ZE 14-12-200 A1	"	12	200	"	"	0 009 340 028
* ZE 14-12-300 A1	"	12	300	"	"	0 009 340 038
ZE 14-12-400 A1	"	12	400	"	"	0 009 340 042
ZE 14-12-600 A1	"	12	600	"	"	0 009 340 024
ZE 14-12-1000 A1	"	12	1000	"	"	0 009 340 083
* ZE 14-12-1200 A1	"	12	1200	"	"	0 009 340 035
ZE 14-12-66	"	12	66	NiCr 8020	"	0 009 340 021
ZE 14-12-200	"	12	200	"	"	0 009 340 012
ZE 14-12-200X	"	12	200	X10CrNi 188	3.5	0 009 340 095
ZE 18-12-50 A1	M 18x1.5	12	50	Kanthal A1	"	0 009 380 032
ZE 18-12-150 A1	"	12	150	"	"	0 009 380 047
ZE 18-12-300 A1	"	12	300	"	"	0 009 380 016
ZE 18-12-400 A1	"	12	400	"	"	0 009 380 017
ZE 18-12-600 A1	"	12	600	"	"	0 009 380 019
* ZE 18-12-1200 A1	"	12	1200	"	"	0 009 380 045
ZE 18-12-1550 A1	"	12	1550	"	"	0 009 380 055
FLE G1/2-12-10	G 1/2*	15	10	X12CrNi 188	M4	0 009 390 001

Connection: M4 thread * - short delivery
* DIN ISO






The ZK special spark plugs with earth electrodes

Description	Thread (mm)	Thread length LG (mm)	Length L (mm)	Ceramic length LK (mm)	Order No.
ZK 14-8-15 A1	M14	8	15	11	0 004 500 401
ZK 14-8-22 A1	M14	8	22	11	0 004 500 419
ZK 14-8-37 A1	M14	8	37	11	0 004 500 601
ZK 14-8-75 A1	M14	8	75	11	0 004 500 421
ZK 14-12-28 A1	M14	12	28	16.3	0 004 400 404
ZK 14-12-35 A1	M14	12	35	16.3	0 004 400 405
ZK 14-12-35 2 LA1	M14	12	35	23.3	0 004 400 400
ZK 14-12-50 A1	M14	12	50	16.3	0 004 400 406
ZK 14-12-75 2 LA1	M14	12	75	23.3	0 004 400 402
ZK 14-12-100 LA1	M14	12	100	23.3	0 004 400 401
ZK 18-12-38 2 LA1	M18	12	38	23.3	0 004 800 400

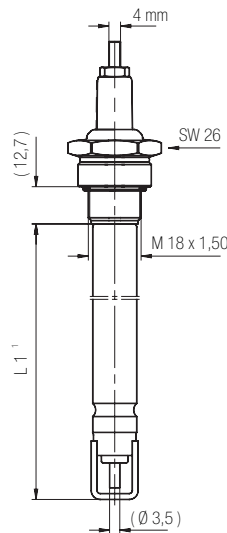
Center electrode
Kanthal A1
Connection M4 thread



The ZK 18-12 special spark plugs with safety tubes ▶

	Length L (mm)	Order No.	
ZK 18-12-145 URA 1	145	0 004 800 614	
ZK 18-12-236 URA 1	236	0 004 800 615	
ZK 18-12-245 URA 1	245	0 004 800 612	
ZK 18-12-750 URA 1	750	0 004 800 601	
ZK 18-12-900 URA 1	900	0 004 800 604	
ZK 18-12-1050 URA 1	1050	0 004 800 613	
ZK 18-12-1104 URA 1	1104	0 004 800 610	
ZK 18-12-236 ZRA 1	236	0 004 800 607	
ZK 18-12-386 ZRA 1	386	0 004 800 618	
ZK 18-12-245 RA 1	245	0 004 800 401	
ZK 18-12-450 RA 1	450	0 004 800 409	
ZK 18-12-900 RA 1	900	0 004 800 403	

Connection: M4 thread
 Length of thread LG 12 mm
 Inconel safety tube, diam. 15 mm
 Center and ground electrode made of Kanthal A1



Beru spark plugs are specially manufactured to customer specifications: In any length desired – and, if planned for periodic use, also with the corresponding humidity insulation. We will be happy to provide you with a detailed offer.

Other things you should know ...

- Insulators made of aluminium oxide AL2 O3 > 95 % C 795
Steatit C 221

Accessories:

SAE cable connecting nut 6.3 mm,
capable of being screwed on M4 thread.
100 units per pack

Design ZnAl order no. 2 004 652 001
Design silver steel order no. 2 004 634 001
Design brass order no. 2 004 650 013

M14 x 1.25 flat-ended nut, order no. 2 903 021 011
BEN 2014 H DIN 439 Stvz

Electrode material Kanthal A1, APM, D, N80, alu chrome (J,Y,O)
or Krupp VDM on request. Supply of different
electrode wire materials in \varnothing 1.2-3.5 mm (length 3 m)
Insulators on request, various support insulators e.g. Isol. 1013,
65 mm with 13.4 mm \varnothing appropriate for ZE 14-12

