

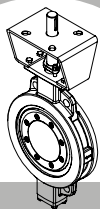
# JIRCA

INTERNATIONAL S.P.A.



PRODUCT GUIDE

# OUR PRODUCTION

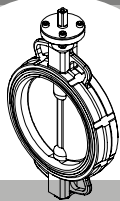


**501M series** - Triple Eccentric Metal Seated Butterfly Valves

p. 4

p. 5

**401N series** - Double Eccentric Butterfly Valves

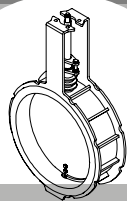


**301 / 301E series** - Butterfly Valves with Rubber Seat

p. 6

p. 6 - 7

**301TSS / 301TT series** - Butterfly Valves with PTFE Lined

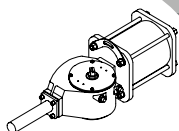


**HT600 series** - Damper Valves for High Temperature

p. 7

p. 8

**AP / APM series** - Pneumatic Rotary Actuators

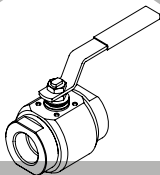


**APG series** - Scotch Yoke Pneumatic Actuators

p. 8

p. 9

**S10 series** - Wafer Flat Body Ball Valves

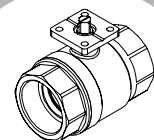


**S20 series** - Two-pieces 800 p.s.i. Ball Valves

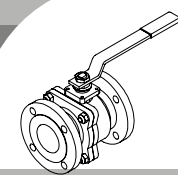
p. 9

p. 9-10

**S30 series** - Split Body Ball Valves / **S30T series** - Trunnion Ball Valves



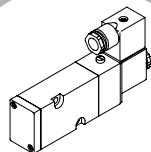
**S40, S50, S60, S70, S80 series** - Threaded Actuated and Manual Ball Valves



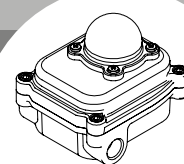
p. 10-11

p. 12

**MBX Series** - Limit Switch Box



**SOV Series** - Solenoid Valves 5/2 or 3/2 way



p. 12

p. 13

**ACCESSORIES**



Sirca International SpA was founded in the late seventies, and started doing business as a manufacturer of complete automation and pneumatic regulation systems.

Our flagship product is rotating pneumatic quarter-turn actuators which are compact, lightweight and highly reliable.

Subsequently, our company entered the Italian market with the production and sale of rubber-seated butterfly valves, double eccentric butterfly valves, ball valves and check valves.

In time at Sirca International we began marketing and producing accessories to actuate, control and regulate valves. These were installed on our own valves and actuators in order to offer our customers complete “assemblies” that are capable of meeting the most varied system requirements.

Beginning in the 1990s, our company began looking at foreign markets and in a short time we started exporting more than 60% of our production.

This type of market development requires continuous product innovation as well as continuous effort to maintain product competitiveness and quality.

With this motivation and these objectives, with the arrival of the new millenium we at Sirca International began designing and producing the triple eccentric butterfly valve metal-seated that are currently top of the range of the valves produced at Sirca.

The main strong points of Sirca International SpA lie in our product quality, competitive price, large warehouse stocks and in the reliability of our services. These confirm our status as a Leading Company on the national and international markets.



**Production site**

Accuracy in producing valve and pneumatic actuator components is fundamental. And it is for this reason that at Sirca International we have a large stock of top-of-the-range CNC machines with CAD-CAM technology. Amongst the machine tools we use are automatic saws, twin-spindle lathes, with double/triple tower and horizontal machining centres.



Coordinate Measuring Machine.  
CMM



Optical emission spectrometer.  
PMI testing (Positive Material Identification)



Coating thickness gauges.  
For coating thickness measurement on metals.



Hardness testing machine.  
Metal and rubber materials.



Vertical idraulic test machine.  
For butterfly and ball valves.



Leack test machine.  
For pneumatic rotary actuators.

# 501M series Triple Eccentric Metal Seated Butterfly Valves



<b>Size range</b>	2.1/2" ÷ 56" (DN65 ÷ DN1400)
<b>Type</b>	Wafer, Lug, Double flanged , Butt welding
<b>Design</b>	ASME B16.34, EN 12516-2, EN 593
<b>Face to face</b>	API 609, EN 558, ANSI B16.10
<b>Operating temperature</b>	-196°C + 815°C (-320 °F ÷ +1500 °F)
<b>Pressure ratings</b>	ASME class 150, 300, 600, PN10 ÷ PN160 – bidirectional
<b>Flange drilling</b>	ASME B16.5, ASME B16.47 series A, EN1092-1
<b>Testing</b>	API 598, API 6D, EN 12266-1
<b>Leakage class</b>	Rate "A" - No leakage – according to EN 12266-1
<b>Standard materials</b>	Body: Carbon Steel, Stainles Steel, Al/Bronze Body seat: Stellite® (overlay welding) Disc: Carbon Steel, Stainles Steel, Al/Bronze Stem: AISI 420, AISI 630, NITRONIC 50
<b>Applications</b>	High pressure, High temperature, Critical service, Cryogenic Service
<b>Certifications</b>	2014/68/UE PED, 2014/34/UE ATEX, Fire Safe API 607, ISO 10497, API 6FA CU TR 10 – CU TR 32

# 401N series Double Eccentric Butterfly Valves



<b>Size range</b>	3" ÷ 56" (DN80 ÷ DN1400)
<b>Type</b>	Wafer, Lug, Double flanged on request
<b>Design</b>	ASME B16.34, EN 12516-2, EN 593
<b>Face to face</b>	API 609, EN 558
<b>Operating temperature</b>	-40°C + 220°C (-40 °F ÷ +428 °F)
<b>Pressure ratings</b>	ASME class 150 - bidirectional
<b>Flange drilling</b>	ASME B16.5, ASME B16.47 series A, EN1092-1
<b>Testing</b>	API 598, EN 12266-1
<b>Leakage class</b>	Rate "A" - No leakage – according to EN 12266-1
<b>Standard materials</b>	Body: Ductile Iron, Carbon Steel, Stainless Steel Disc: Ductile Iron, Carbon Steel, Stainless Steel Stem: AISI 304, AISI 316, AISI 630 Seat: PTFE + Carbographe
<b>Applications</b>	Chemical and Pharmaceutical industries, systems for solvent recovery, other applications with compatible materials to working conditions
<b>Certifications</b>	2014/68/UE PED, 2014/34/UE ATEX, SIL - IEC 61508, IEC 61511, GOST-R, CU TR 10 – CU TR 32 Fire Safe certified according to ISO10497 (only for S401N-FS with R-PTFE seat + S.S. metal seat)

## 301 series



### Butterfly Valves with Rubber Seat

<b>Size range</b>	1.1/2" ÷ 40" (DN40 ÷ DN1000)
<b>Type</b>	Wafer, Lug, Double flanged
<b>Face to face dimension</b>	EN 558 series 20
<b>Top flange</b>	ISO 5211
<b>Max working pressure</b>	20 bar - bidirectional
<b>Flange drilling</b>	PN6, PN10, PN16 / ANSI class 150
<b>Operating temperature</b>	-20 °C ÷ +160 °C (-4 °F ÷ +320 °F)
<b>Standard materials</b>	Body: Ductile Iron, Carbon Steel, Stainless Steel, Al/Bronze, F51 Disc: Ductile Iron, Carbon Steel, Stainless Steel, Al/Bronze Stem: AISI 316, AISI 420, AISI 630, MONEL K Seat: NBR, EPDM, EPDM HT, VITON, more (all seats have inside a metal ring reinforcement)
<b>Leakage class</b>	Rate "A" - No leakage – according to EN 12266-1
<b>Applications</b>	Liquids or gases in industrial environments, plants, water treatment, vacuum, other applications with compatible materials to working conditions
<b>Certifications</b>	2014/68/UE PED, 2014/34/UE ATEX, SIL IEC 61508 - IEC 61511 CU TR 10 – CU TR 32, TA-Luft, DIN EN 13774 DVGW

## 301E series



### Butterfly Valves with Rubber Seat

<b>Size range</b>	1.1/2" ÷ 20" (DN40 ÷ DN500)
<b>Type</b>	Wafer, Lug
<b>Face to face dimension</b>	EN 558 series 20
<b>Top flange</b>	ISO 5211
<b>Max working pressure</b>	16 bar - bidirectional
<b>Flange drilling</b>	PN10, PN16 / ANSI 150
<b>Operating temperature</b>	-20 °C ÷ +100 °C with NBR seat -20 °C ÷ +120 °C with EPDM seat
<b>Standard materials</b>	Body: Cast Iron Disc: Ductile Iron, Stainless Steel Stem: AISI 316, AISI 420, AISI 630 Seat: NBR, EPDM (the seat is fitted on the valve body)
<b>Leakage class</b>	Rate "A" - No leakage – according to EN 12266-1
<b>Applications</b>	Liquids or gases in industrial environments, generic plants, water treatment, other applications with compatible materials to working conditions
<b>Certifications</b>	2014/68/UE PED - 2014/34/UE ATEX - SIL - IEC 61508, IEC 61511 CU TR 10 – CU TR 32

## 301TSS series



### Butterfly Valves with PTFE Lined

<b>Size range</b>	1.1/2" ÷ 16" (DN40 ÷ DN400)
<b>Type</b>	Wafer, Lug
<b>Face to face dimension</b>	EN 558 series 20
<b>Top flange</b>	ISO 5211
<b>Max working pressure</b>	10 bar - bidirectional
<b>Flange drilling</b>	PN6, PN10, PN16, ANSI class 150
<b>Operating temperature</b>	-20 °C ÷ +130 °C (-4 °F ÷ +266 °F) other on request
<b>Standard materials</b>	Body: Ductile Iron, Carbon Steel, Stainless Steel, Disc: Stainless steel Stem: AISI 316, AISI 630, Seat: PTFE liner thickness 1,6 mm + EPDM (all seats have inside an aluminum ring reinforcement)
<b>Leakage class</b>	Rate "A" - No leakage – according to EN 12266-1
<b>Applications</b>	Pharmaceutical, Chemical and Food industries, Naval installation, other applications with compatible materials to working conditions
<b>Certifications</b>	2014/68/UE PED - 2014/34/UE ATEX - SIL - IEC 61508, IEC 61511 CU TR 10 – CU TR 32

## 301TT series

### Butterfly Valves with PTFE Lined



<b>Size range</b>	1.1/2" ÷ 12" (DN40 ÷ DN300)
<b>Type</b>	Wafer, Lug
<b>Face to face dimension</b>	EN 558 series 20
<b>Top flange</b>	ISO 5211
<b>Max working pressure</b>	10 bar - bidirectional
<b>Flange drilling</b>	PN10, PN16, ANSI150
<b>Operating temperature</b>	-20 °C ÷ +150 °C (-4 °F ÷ +302 °F)
<b>Standard materials</b>	Body: Ductile iron GGG40.3 Disc: Stainless Steel CF8M + PTFE Stem: AISI 316 Seat: PTFE liner thickness 3 mm min + Silicon
<b>Leakage class</b>	Rate "A" - No leakage – according to EN 12266-1
<b>Applications</b>	Highly corrosive fluids, toxic media, Pharmaceutical, Chemical and Food industries, Naval installation, other applications with compatible materials to working conditions
<b>Certifications</b>	2014/68/UE PED, 2014/34/UE ATEX, SIL IEC 61508 - IEC 61511 CU TR 10 – CU TR 32

## HT600 series

### Damper Valves for High Temperature



<b>Size range</b>	2" ÷ 72" (DN50 ÷ DN1800)
<b>Type</b>	Wafer, Flanged
<b>Face to face dimension</b>	EN 558 series 16 for DN50÷500, series 20 for DN600÷1800
<b>Top flange</b>	ISO 5211
<b>Max working pressure</b>	2 bar - bidirectional
<b>Flange drilling</b>	PN6, PN10, PN16, ANSI class 150
<b>Operating temperature</b>	-20 °C ÷ +600 °C (-4 °F ÷ +1112 °F)
<b>Standard materials</b>	Body: Carbon Steel, Stainless Steel, Disc: Carbon Steel, Stainless Steel Stem: AISI 316, AISI 630 Seal: Metal to metal
<b>Max leakage class</b>	Class II - ASME B16.104
<b>Applications</b>	For interception and control of fumes, steam and air with high temperatures
<b>Certifications</b>	2014/34/UE ATEX - SIL - IEC 61508, IEC 61511 CU TR 10 – CU TR 32

## AP/APM series



## Pneumatic Rotary Actuators

<b>Series</b>	AP / APM DA Double Acting / SA Single Acting
<b>Size range</b>	AP0 ÷ AP12 (Ø32mm to Ø330mm)
<b>Stroke</b>	90° with single travel adjustment ±3° (AP series) 90° with double travel adjustment ±5° (APM series)
<b>Pressure range</b>	2 bar ÷ 8 bar for Double Acting 3 bar ÷ 8 bar for Single Acting
<b>Torque range</b>	2,4 ÷ 7500 Nm (21,4 ÷ 66875 lbf.in)
<b>Operating temperature</b>	-20 °C ÷ +80 °C (-4 °F ÷ +175 °F) standard
<b>Design reference</b>	UNI EN 15714-3, ISO 5211, VDI / VDE 3845
<b>Flange interface</b>	ISO 5211
<b>Stem connection</b>	Square or polygonal shape ISO 5211
<b>Interface for pilot valve</b>	NAMUR type
<b>Accessories flange</b>	VDI / VDE 3845, UNI EN 15714-3
<b>Standard materials</b>	Body: Aluminum alloy extrude bar Cap and piston: Die casting aluminum alloy Stem: Carbon Steel nickel plated
<b>Applications</b>	They find their best application for actuation of quarter turn valves, such as: ball valve, butterfly valve, plug valve
<b>Certifications</b>	2014/34/UE ATEX, SIL IEC 61508 - IEC 61511 CU TR 10 – CU TR 32

## APG series



## Scotch Yoke Pneumatic Actuators

<b>Series</b>	APG, single or double cylinder DA Double Acting / SA Single Acting
<b>Size range</b>	APG200 – APG250 (Ø200mm - Ø250mm)
<b>Stroke</b>	90° with std adjustment ±5°
<b>Pressure range</b>	3 bar ÷ 7 bar for Double Acting
<b>Torque range</b>	658 Nm ÷ 7400 Nm
<b>Operating temperature</b>	-20 °C ÷ +80 °C (-4 °F ÷ +175 °F) standard
<b>Design reference</b>	ISO 5211 - VDI / VDE 3845
<b>Flange interface</b>	ISO 5211
<b>Stem connection</b>	Round with key
<b>Air connection</b>	1/4" GAS
<b>Accessories flange</b>	VDI / VDE 3845 - UNI EN 15714-3
<b>Standard materials</b>	Ductile Iron / Carbon Steel
<b>Applications</b>	They find their best application for actuation of quarter turn valves, such as: ball valve, butterfly valve, plug valve
<b>Certifications</b>	2014/34/UE ATEX, SIL IEC 61508 - IEC 61511 CU TR 10 – CU TR 32

## S10 series

### Wafer Flat Body Ball Valves



<b>Size range</b>	1/2" ÷ 8" (DN15 ÷ DN200) full bore
<b>Type</b>	Wafer from bar or casting
<b>Design</b>	ASME B16.34, EN 12516-2, ISO 14313
<b>Face to face dimension</b>	EN 558 series 100
<b>Top flange</b>	ISO 5211
<b>Max working pressure</b>	50 bar bidirectional, for class 300
<b>Flange drilling</b>	PN6, PN10, PN16, PN25, PN 40, ANSI class 150, class 300
<b>Operating temperature</b>	-20 °C ÷ +200 °C (-4 °F ÷ +392 °F)
<b>Standard materials</b>	Body: Carbon Steel, Stainless Steel Ball: AISI 304, CF8M Stem: AISI 304, AISI 316 Seat: PTFE + fiber glass, PTFE + carbographe
<b>Leakage class</b>	Rate "A" - No leakage – according to EN 12266-1
<b>Applications</b>	Air, gas, liquids free from impurities for industrial environments, plants, waters treatment, other applications with compatible materials to working conditions
<b>Certifications</b>	2014/68/UE PED, 2014/34/UE ATEX, Fire Safe API 607, ISO 10497, API 6FA, SIL - IEC 61508, IEC 61511, CU TR 10 – CU TR 32, DIN EN 13774 DVGW

## S20/S20M series

### Two-pieces 800 lb Ball



<b>Size range</b>	1/4" ÷ 2.1/2" (DN08 ÷ DN65) full bore and reduced bore
<b>Type</b>	2-pieces, from bar
<b>Design</b>	ASME B16.34, EN 12516-2, ISO 14313, DIN 3202 M3
<b>Top flange</b>	ISO 5211
<b>Max working pressure</b>	800 lb (138 bar) bidirectional
<b>End type</b>	Threaded: ISO 228-1 GAS, ASME B1.20.1 NPT Butt welding: with nipples ASME B36.10 sch. 80 Socked welding: ASME B16.11
<b>Operating temperature</b>	-20 °C ÷ +200 °C (-4 °F ÷ +392 °F)
<b>Standard materials</b>	Body: Carbon Steel, Stainless Steel Ball: AISI 304, CF8M Stem: AISI 304, AISI 316 Seat: PTFE + fiber glass, PTFE + carbographe
<b>Leakage class</b>	Rate "A" - No leakage – according to EN 12266-1
<b>Applications</b>	Air, gas, liquids free from impurities, chemical agents in each field, other applications with compatible materials to working conditions
<b>Certifications</b>	2014/68/UE PED, 2014/34/UE ATEX, Fire Safe API 607, ISO 10497, API 6FA SIL - IEC 61508, IEC 61511, CU TR 10 – CU TR 32

## S30 series

### Split Body Ball Valves



<b>Size range</b>	1/2" ÷ 8" (DN15 ÷ DN200) full bore
<b>Type</b>	Split body from bar or casting
<b>Design</b>	ASME B16.34, EN 12516-2, ISO 14313, EN 1759-1
<b>Top flange</b>	ISO 5211
<b>Max working pressure</b>	100 bar bidirectional, for class 600
<b>Flange drilling</b>	PN10, PN16, PN25, PN40, ANSI class 150, class 300, class 600
<b>Operating temperature</b>	-20 °C ÷ +200 °C (-4 °F ÷ +392 °F)
<b>Standard materials</b>	Body: Carbon Steel, Stainless Steel Ball: AISI 304, CF8M Stem: AISI 304, AISI 316 Seat: PTFE + fiber glass, PTFE + carbographe
<b>Leakage class</b>	Rate "A" - No leakage – according to EN 12266-1
<b>Applications</b>	Air, gas, liquids free from impurities, chemical agents in each field, other applications with compatible materials to working conditions
<b>Certifications</b>	2014/68/UE PED, 2014/34/UE ATEX, Fire Safe API 607, ISO 10497, API 6FA, CU TR 10 – CU TR 32, DIN EN 13774 DVGW

## S30T series



### Trunnion Ball Valves

<b>Size range</b>	1" ÷ 24" (DN25 ÷ DN600)
<b>Type</b>	Trunnion ball valves (SPE or DPE piston effect)
<b>Design</b>	API 6D (ISO14313); ASME B16.34 Face to Face: API 6D, ASME B16.10, EN 558-1 Raised Face: ASME B16.5, EN 1092-1
<b>Top flange</b>	According to ISO 5211
<b>Max working pressure</b>	From 20 bar for ANSI150 class to 420 bar for ANSI2500 class
<b>Flange drilling</b>	ASME B16.5, EN 1092-1
<b>Operating temperature</b>	Standard: -29 °C ÷ +200 °C (-20,2 °F ÷ +392 °F)
<b>Standard materials</b>	Body: ASTM A352 LF2+ENP or AISI A 182 F316L Ball: ASTM A352 LF2+ENP or AISI A 182 F316L Seat+Insert: ASTM A352 LF2+ENP or AISI A 182 F316L / DEVLON Stem: AISI 4140+ENP or AISI A 182 F316L
<b>Leakage class</b>	NO leakage class (API 6D, API 598)
<b>Applications</b>	Air, gas, liquids free from impurities, chemical agents in each field, other applications with compatible materials to working conditions
<b>Standard Certifications</b>	2014/68/UE PED, 2014/34/UE ATEX Design FIRE SAFE API 607, ISO 10497, API 6FA

## S40/S40M series



### Threaded Actuated and Manual Ball Valves

<b>Size range</b>	1/4" ÷ 4" (DN08 ÷ DN100) full bore
<b>Type</b>	2-pieces with handle or with flange for automation
<b>Top flange</b>	ISO 5211
<b>Max working pressure</b>	40 bar bidirectional
<b>End type</b>	Threaded ISO 228-1 GAS
<b>Operating temperature</b>	-20 °C ÷ +120 °C (-4 °F ÷ +248 °F)
<b>Standard materials</b>	Body: Brass nickel plated Ball: Brass nickel plated Stem: Brass Seat: PTFE
<b>Applications</b>	Mounting into fixed pipe system for each type of hydraulic system, heating services, pneumatic
<b>Certifications</b>	2014/68/UE PED, 2014/34/UE ATEX, CU TR 10 – CU TR 32

## S50/S50M series



### Threaded Actuated and Manual Ball Valves

<b>Size range</b>	1/4" ÷ 3" (DN08 ÷ DN80) full bore
<b>Type</b>	2-pieces with handle or with flange for automation
<b>Top flange</b>	ISO 5211
<b>Max working pressure</b>	63 bar bidirectional
<b>End type</b>	Threaded: ISO 228-1 GAS ASME B1.20.1 NPT on request
<b>Operating temperature</b>	-25 °C ÷ +200 °C (-13 °F ÷ +392 °F)
<b>Standard materials</b>	Body: Stainless Steel CF8M Ball: Stainless Steel CF8M Stem: AISI 304 Seat: PTFE + fiber glass
<b>Applications</b>	Mounting into fixed pipe system for each type of hydraulic system, heating services, pneumatic
<b>Certifications</b>	2014/68/UE PED, 2014/34/UE ATEX, CU TR 10 – CU TR 32

## S60/S60M series

### Threaded Actuated and Manual Ball Valves



<b>Size range</b>	1/4" ÷ 4" (DN08 ÷ DN100) full bore
<b>Type</b>	3-pieces with handle or with flange for automation
<b>Top flange</b>	ISO 5211
<b>Max working pressure</b>	63 bar bidirectional
<b>End type</b>	Threaded: ISO 228-1 GAS ASME B1.20.1 NPT on request Socket weld ASME B16.11 -25 °C ÷ +200 °C (-13 °F ÷ +392 °F)
<b>Temperature range</b>	Body: Stainless Steel CF8M
<b>Standard materials</b>	Ball: Stainless Steel CF8M Stem: AISI 304 Seat: PTFE + fiber glass
<b>Leakage class</b>	Rate "A" - No leakage – according to EN 12266-1
<b>Applications</b>	Mounting into fixed pipe system for each type of hydraulic system, heating services, pneumatic
<b>Certifications</b>	2014/68/UE PED, 2014/34/UE ATEX, CU TR 10 – CU TR 32

## S70/S70M series

### Threaded Actuated and Manual Ball Valves



<b>Size range</b>	1/4" ÷ 2" (DN08 ÷ DN50) full bore
<b>Type</b>	3-ways "L" with handle or with flange for automation
<b>Top flange</b>	ISO 5211
<b>Max working pressure</b>	63 bar bidirectional
<b>End type</b>	Threaded ISO 228-1 GAS
<b>Operating temperature</b>	-20 °C ÷ +120 °C (-4 °F ÷ +392 °F)
<b>Standard materials</b>	Body: Stainless Steel CF8M Ball: Stainless Steel CF8M Stem: AISI 304 Seat: PTFE + fiber glass
<b>Applications</b>	Mounting into fixed pipe system for each type of hydraulic system, heating services, pneumatic
<b>Certifications</b>	2014/68/UE PED, 2014/34/UE ATEX, CU TR 10 – CU TR 32

## S80/S80M series

### Threaded Actuated and Manual Ball Valves



<b>Size range</b>	1/4" ÷ 2" (DN08 ÷ DN50) full bore
<b>Type</b>	3-ways "L" with handle or with flange for automation
<b>Top flange</b>	ISO 5211
<b>Max working pressure</b>	30 bar bidirectional
<b>End type</b>	Threaded ISO 228-1 GAS
<b>Operating temperature</b>	-20 °C ÷ +120 °C (-4 °F ÷ +248 °F)
<b>Standard materials</b>	Body: Brass nickel plated Ball: Brass nickel plated Stem: Brass nickel plated Seat: PTFE
<b>Applications</b>	Mounting into fixed pipe system for each type of hydraulic system, heating services, pneumatic
<b>Certifications</b>	2014/68/UE PED, 2014/34/UE ATEX, CU TR 10 – CU TR 32

## MBX series



## Limit Switch Box

<b>Models</b>	MBX10EM2 with mechanical switches MBX12EM2 with two switch DPDT MBX20EX2 with mechanical explosion-proof switches MBX3_PN2 with intrinsically safety proximity switches MBX4_PN2 with amplifier proximity switches MBX50MP2 with pneumatic switches
<b>Construction</b>	Suitable for indoor and outdoor installation
<b>Operating temperature</b>	-25 °C ÷ +85 °C (-13 °F ÷ +185 °F) Lower and higher temperature available on request
<b>Weight</b>	0,95 kg (2.09 lbs)
<b>Enclosure grade</b>	IP 67
<b>Bracket</b>	VDI / VDE 3845, UNI EN 15714-3
<b>Cable entries</b>	Two cable entry M20x1,5 Different entries cable available on request
<b>Standard materials</b>	Body: Die casting aluminum Cover: Die casting aluminum Stem: AISI 303
<b>Applications</b>	Compact limit switch box, designed for safe and hazardous areas, provides a visual and electrical remote position feedback on automated valves with 90° of rotation
<b>Certifications</b>	2014/34/UE ATEX (some models only), SIL IEC 61508 - IEC 61511 CU CU TR 32

## S0V series

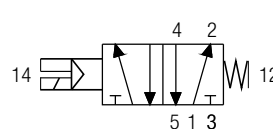


## Solenoid Valves 5/2 or 3/2 way

<b>Models</b>	Single or double solenoid
<b>Construction</b>	Suitable for indoor and outdoor installation
<b>Temperature range</b>	-10 °C ÷ +50 °C (14 °F ÷ +122 °F)
<b>Weight</b>	0,310 ÷ 0,400 kg (0,683 ÷ 0,881 lbs)
<b>Protection</b>	IP 65
<b>Fluid</b>	Filtered and lubricated air
<b>Working pressure</b>	2,5 bar min / 10 bar max
<b>Acting</b>	Internal piloted
<b>Port size</b>	In = Out = 1/4" GAS or NPT
<b>Connection</b>	NAMUR
<b>Body materials</b>	Aluminum alloy
<b>Accessories</b>	Solenoid, LED standard connector, adapter plate for use as 3/2 regulator exhaust silencer
<b>Solenoid specification</b>	
<b>Standard voltage</b>	AC220V, AC110V, AC24V, DC24V, DC12V
<b>Temperature range</b>	-10 °C ÷ +50 °C (14 °F ÷ +122 °F)
<b>Connection type</b>	DIN 43650 type B industrial
<b>Activating time</b>	0,05 sec and below
<b>Protection</b>	IP 65

### Pneumatic symbol

5/2 monostable solenoid valve

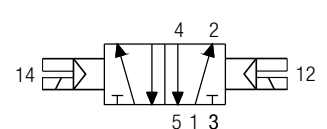


① = Supply

④ ② = Output

⑤ ③ = Exhaust

5/2 bistable solenoid valve



## MULTI-POSITION HAND LEVER



## ELECTRO PNEUMATIC Positioner 4 ÷ 20 mA signal



## GEAR BOX



## PNEUMATIC POSITIONER



## DISENGAGEABLE GEAR BOX



## ELECTRIC ACTUATORS

