

03/2022



**⚠** Above stated body materials refer to the valve port connections that get in contact with the media only!

**details needed for main valve**

- orifice
- port
- pressure regulating range
- flow rate
- media
- media temperature
- ambient temperature

**details needed for pneumatic actuation**

- nominal voltage
- type of protection
- actuation pressure range min/max

**⚠** The valves' technical design is based on media and application requirements. This can lead to deviations from the general specifications shown on the data sheet with regards to the design, sealing materials and characteristics.

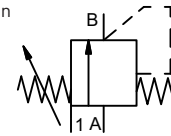
**⚠** If order or application specifications are incomplete or imprecise there exists a risk of an incorrect technical design of the valve for the required application. As a consequence, the physical and / or chemical properties of the materials or seals used, may not be suitable for the intended application. To avoid hydraulic shocks in pipelines, the flow velocities must be taken into account when designing valves for liquids.

**control valve manual**

**pressure range**  
**orifice**  
**connection**  
**function**

**externally controlled**

PN 0-100 bar  
 DN 15 mm  
 thread/cartridge  
 stepless pressure regulation



**operating principle**

**body material**

externally controlled with spring return

- ① aluminium
- ② brass
- ③ stainless steel
- ④

**valve seat**

**seal materials**

synthetic materials on metal / metal on metal  
 EPDM, PU, HNBR **FPM**

**ports**

**function**  
**pressure regulation range**  
**flow rate**  
**media**

**general specifications**

HPP-3 with valve body thread G 1/2 - G 3/4  
 stepless pressure regulation  
 bar 5-100  
 m³/h max. 6,0  
 gaseous - liquid - highly viscous - contaminated  
 A ⇌ B as marked  
 ms < 200  
 °C 0 to +60  
 °C 0 to +50

**options**

without valve body  
 available

**abrasive media**

**flow direction**  
**settling time**  
**media temperature**  
**ambient temperature**  
**approvals**  
**mounting**  
**weight**  
**additional equipment**

kg 4,4 **mounting holes** 3,3

**nominal voltage**

**power consumption**

**protection**  
**energized duty rating**  
**connection**  
**optional**  
**additional equipment**  
**max. temperature**

**electrical specifications**

U<sub>n</sub> DC 24 V  
 U<sub>n</sub> AC 230 V 50 Hz  
 DC 4,8 W  
 AC pick up 11,0 VA holding 8,5 VA  
 IP65 (P54) acc. DIN 40050  
 ED 100%  
 M12x1 plug acc. DIN EN 175301-803 form B, 3 positions x90° / wire diameter 6-8 mm  
 connector acc. DESINA  
 illuminated plug with varistor  
 media 60°C  
 ambient 50°C  
 E Ex e II T5 nominal voltage U<sub>n</sub>  
 power consumption

**options**

special voltage upon request  
 special voltage upon request  
 2,5 W  
 connector acc. VDMA  
 DC 24 V 3,25 W  
 AC 230 V 50 Hz 2,90 W

**explosion proof**

**actuation pressure range**

**compressed air**  
**control**  
**actuator ports**

**pneumatic specifications**

bar see actuation pressure-diagram  
 DIN ISO 8573-1 grade of compressed air quality 5/4/3  
 via 3/2 way pilot valve for shutt-off  
 1 G 1/8

**options**

■ specifications not highlighted are standard  
 ■ specifications highlighted in grey are optional

