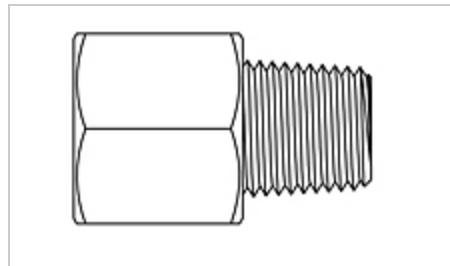
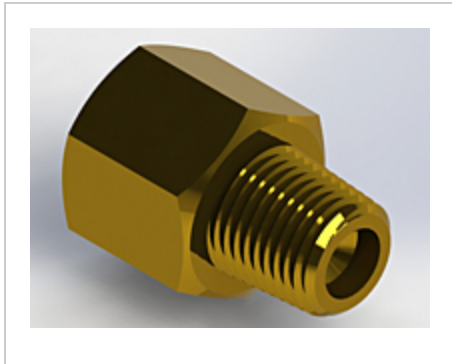




If it's about precision, it's O'Keefe.

Part Number D-100-BR, Orifice Assembly - Adapter, Type D

One-piece construction of solid metal is employed. Orifices are accurately machined, thoroughly cleaned, and flow tested to exacting standards. Sizes range from .004" to .125" orifice diameter. Special sizes can be made to order.



[Specifications](#) | [Application](#) | [Dimensions](#) | [Flow Data](#)

Specifications

Material	Brass
Nominal Orifice Size	100
C_v	0.230
Maximum Operating Pressure	2000 psig

Connection A	1/8" NPT Male
Connection B	1/8" NPT Female
Screened	None

Application

- High Pressure Capability
- Bi-Directional Flow Compatibility
- Economical Precision Orifice
- Repeatable Orifice Size and Shape
- Predictable Flow Rate

Dimensions

Orifice Diameter	0.1000 in
Orifice Diameter Accuracy	±0.0005 in
Width Across Flats (Hex)	9/16 in
Total Length	0.880 in

Flow Data

Air Flow at Pressure - Standard Cu. Ft. Per Hour (SCFH)

1 psig: 69.8
 5 psig: 150
 10 psig: 196
 15 psig: 235
 20 psig: 275
 25 psig: 316
 30 psig: 356
 40 psig: 439
 50 psig: 523
 60 psig: 606

	<p>70 psig: 693 80 psig: 778 90 psig: 860 100 psig: 951</p>
Air Flow at Vacuum - Standard Cu. Ft. Per Hour (SCFH)	<p>5 In. Hg.: 96.1 10 In. Hg.: 120</p>
Air Flow at Vacuum, Choked Flow - Standard Cu. Ft. Per Hour (SCFH)	<p>15 In. Hg.: 125 20 In. Hg.: 125 30 In. Hg.: 125</p>
Air Flow at Pressure - Standard Liters Per Minute (SLPM)	<p>1 psig (6.9 kPag): 32.9 5 psig (34.5 kPag): 70.8 10 psig (69.0 kPag): 92.3 15 psig (103.4 kPag): 111 20 psig (137.9 kPag): 130 25 psig (172.4 kPag): 149 30 psig (206.9 kPag): 168 40 psig (275.8 kPag): 207 50 psig (344.8 kPag): 247 60 psig (413.7 kPag): 286 70 psig (482.7 kPag): 327 80 psig (551.6 kPag): 367 90 psig (620.6 kPag): 406 100 psig (689.5 kPag): 449</p>
Air Flow at Vacuum - Standard Liters Per Minute (SLPM)	<p>5 In. Hg. (127 Mm. Hg.): 45.3 10 In. Hg. (254 Mm. Hg.): 56.6</p>
Air Flow at Vacuum, Choked Flow - Standard Liters Per Minute (SCFH)	<p>15 In. Hg. (381 Mm. Hg.): 59 20 In. Hg. (508 Mm. Hg.): 59 30 In. Hg. (762 Mm. Hg.): 59</p>
Water Flow - Gallons/minute (GPM)	<p>1 psig: 0.230 2 psig: 0.325 3 psig: 0.398 4 psig: 0.460 5 psig: 0.514 6 psig: 0.563 7 psig: 0.609 8 psig: 0.651 9 psig: 0.690 10 psig: 0.727 15 psig: 0.891</p>

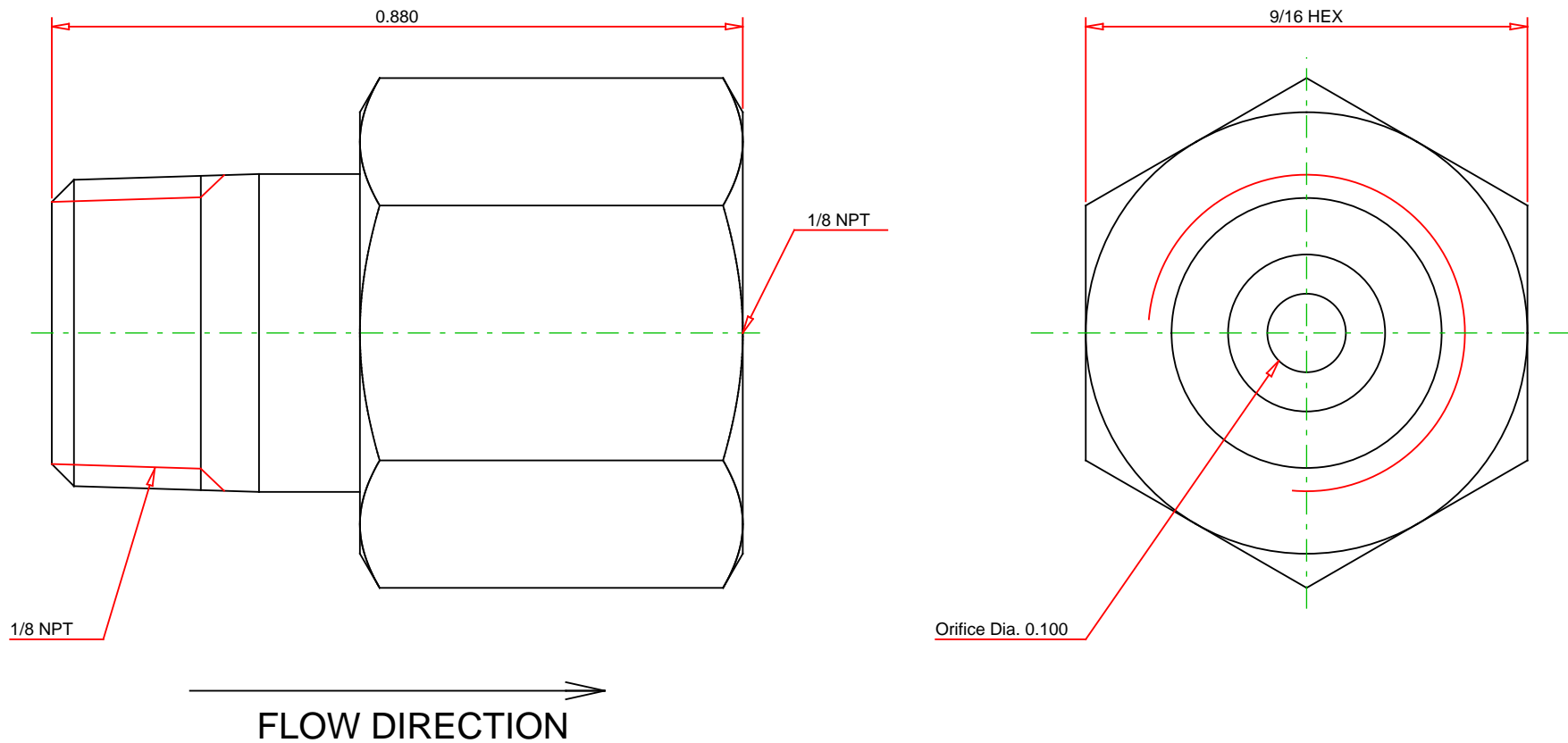
20 psig: 1.029
 30 psig: 1.260
 40 psig: 1.455
 50 psig: 1.626
 60 psig: 1.782
 70 psig: 1.924
 80 psig: 2.057
 90 psig: 2.182
 100 psig: 2.300

Water Flow - Liters/minute (LPM)

1 psig (6.9 kPag): 0.871
 2 psig (13.8 kPag): 1.231
 3 psig (20.7 kPag): 1.508
 4 psig (27.6 kPag): 1.741
 5 psig (34.5 kPag): 1.947
 6 psig (41.4 kPag): 2.133
 7 psig (48.3 kPag): 2.304
 8 psig (55.2 kPag): 2.463
 9 psig (62.1 kPag): 2.612
 10 psig (69 kPag): 2.753
 15 psig (103.4 kPag): 3.372
 20 psig (137.9 kPag): 3.894
 30 psig (206.9 kPag): 4.769
 40 psig (275.8 kPag): 5.506
 50 psig (344.8 kPag): 6.156
 60 psig (413.7 kPag): 6.744
 70 psig (482.7 kPag): 7.284
 80 psig (551.6 kPag): 7.787
 90 psig (620.6 kPag): 8.260
 100 psig (689.5 kPag): 8.706

Flow Data Status

Generic



Part No.: D-100-BR

Orifice Assembly - Adapter, Type D

- Drawing Not to Scale
- Dimensions Subject to Change
- Dimensions in Inches

- RoHS Compliant
- REACH Compliant
- Does Not Contain Any Conflict Minerals



This template has been prepared for informational purposes pursuant to specifications provided by you and at your request. Template dimensions are for reference only and subject to change, non-specified dimensions may not be accurate. Please contact O'Keefe Controls Co. for more information. Each reader of the template should consult with his or her own qualified engineer prior to using the template in whole or in part.