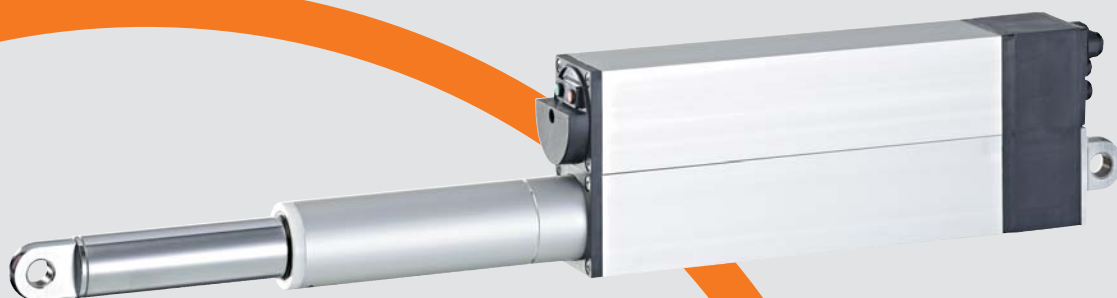


Linear actuator Kompakt



*Our elegant
model with
compact design*



Linear actuators Kompakt



Description · Applications

The linear actuators of the Kompakt series are versatile push rod actuators with compact design used for

- locking devices for rolling doors
 - tilting devices
 - butterfly valve operation
 - operable windows
 - lifting platforms
- and many other applications

The facts

	Kompakt
Load (N)	400-15,000
Stroke speed (mm/s)	1.5-65
Stroke lengths (mm)	max. 1000 ⁽¹⁾
Operating voltage	400 V 3 AC or 24 V DC
Control voltage	230 V 1 AC or 24 V DC
Temperature range (°C)	-10 to + 50
Protection type	IP 54
Piston rod	torsion-lock
Double scraper ring	at piston outlet
Limit switches	electronic
Design	extremely short thanks to special elero technology

⁽¹⁾ At slower stroke speeds and longer stroke lengths, it is possible that, due to the rating, the entire stroke cannot be completed in one cycle.

Load (N) and stroke speeds (mm/s)

Version	400 V three-phase 50 Hz Rating: S3/15%			24 V DC Rating: S3/15%			24 V DC Rating: S1			Number of add. planetary gear stages	Available with brake only
	Stroke speed (mm/s)	Load (N)	Nominal current (A)	Stroke speed (mm/s)	Load (N)	Nominal current (A)	Stroke speed (mm/s)	Load (N)	Nominal current (A)		
A	65	1,000	1.3	55	700	10	-	-	-	-	x
B	45	1,500	1.3	35	1,000	10	-	-	-	-	x
C	17	4,000	1.3	17	1,500	10	22	400	5	-	x
D	12	7,000	1.3	12	2,600	10	15	1,000	5	-	x
E	7	12,000	1.3	7	5,500	10	9.5	1,800	5	-	-
F	5.5	15,000	1.3	4.5	8,000	10	5.5	2,500	5	1	-
G	4	15,000	1.3	3	11,000	10	4	4,500	5	1	-
H	2	15,000	1.3	2	15,000	8	2.5	8,500	5	1	-
I	1.6	15,000	1.3	1.5	15,000	5	1.5	15,000	5	1	-

Note: All technical data represent average values and are based on an ambient temperature of 20 °C. Stroke speeds of direct current motors are load and temperature dependent.



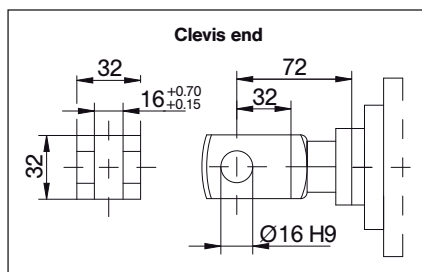
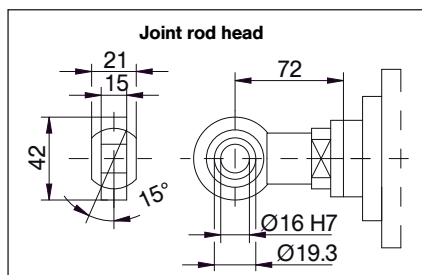
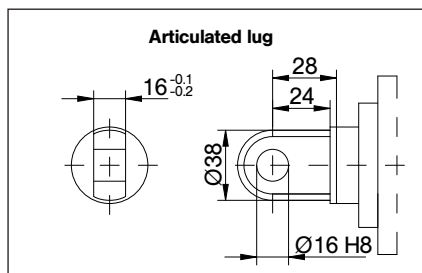
Options

- Analogue output 0-10 V
- Brake
- Standard fasteners
- Fasteners can be adjusted to 90°

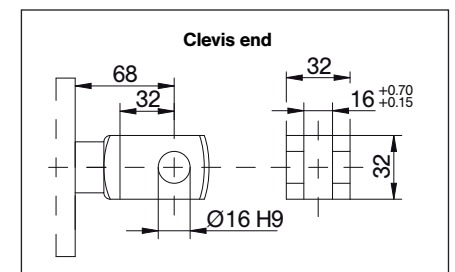
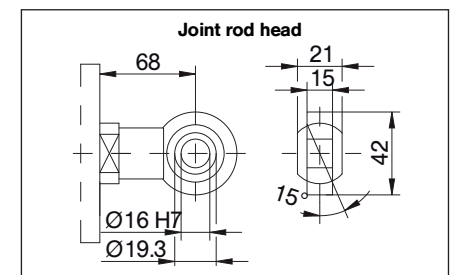
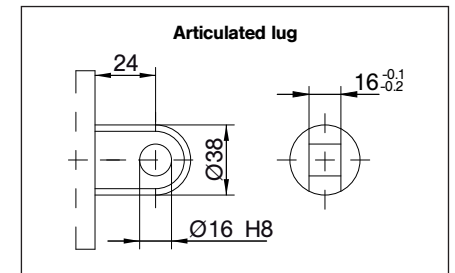
Other stroke lengths, special voltages, circuit variants, cable types as well as additional equipment (protective sleeve, recirculating ballscrew, plug connections, etc.) on request.

Fixing

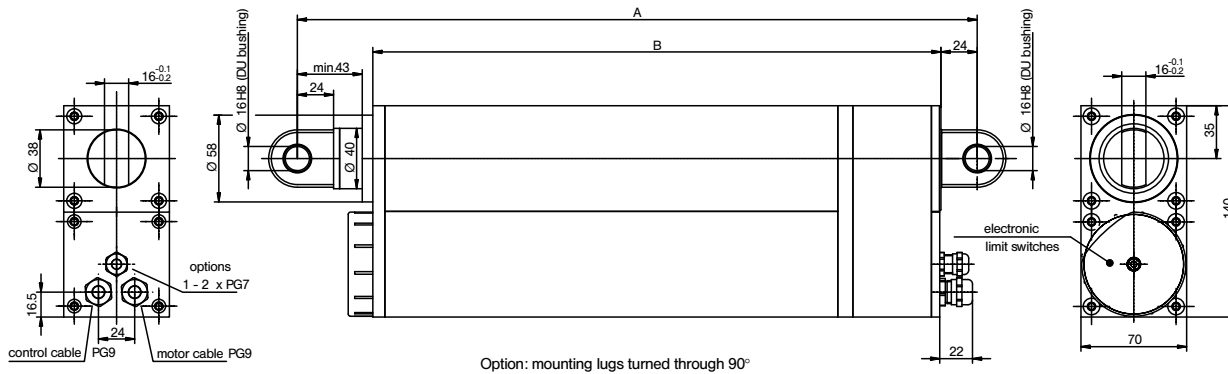
on piston end



on housing end



Technical data and dimensions



Dimension A

Stroke length	Dimension A	
	min.	max.
200	450*	650*
250	500	750
300	550	850
350	600	950
400	650	1050
450	700	1150
500	800	1300
600	900	1500
700	1000	1700
800	1100	1900
900	1200	2100
1000	1300	2300

Dimension A increases by

- + 44 mm with an attached clevis end/joint rod head
- + 75 mm with an attached spring-action articulated lug

*ATTENTION:

If the body dimension is 378 mm, dimension A increases by 50 mm.

Dimension B

Basic version	376
With additional planetary gear stage and (potentiometer or brake)	378
With brake and potentiometer	378