

# AA3233-004

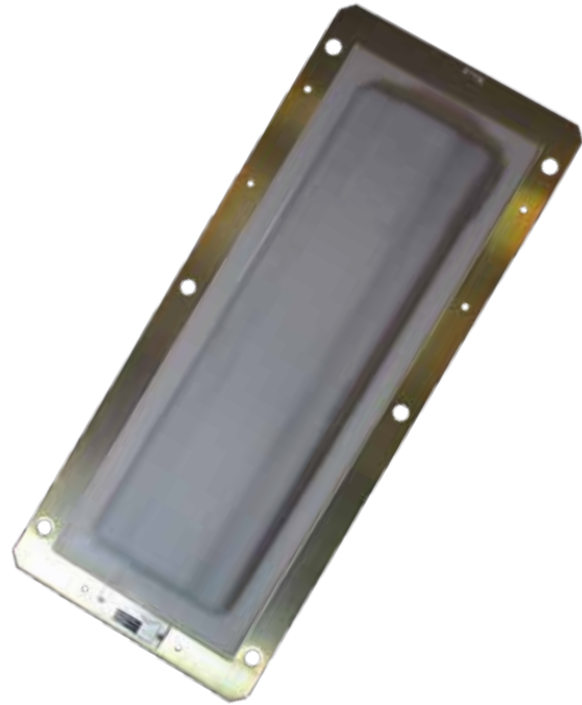
## On-Board Heavy Rail Antenna with Check Tag

TransCore's AA3233-004 Heavy Rail Antenna is a rugged, reliable 915 MHz antenna specifically designed for mounting to train undercarriages.

Constructed for high shock and vibration environments, the rugged weatherproof enclosure provides protection from harsh environmental conditions encountered in railroad applications.

The AA3233-004 comes with an integrated check tag. When paired with TransCore's AT5000-series transportation tags, the AA3233-004 Heavy Rail Antenna can read rail transponders at speeds up to 75 mph (120 km/h).

The AA3233-004 includes a strain relief kit to provide better coaxial cable durability when used in bogie mount applications.



### Features

- ▶ Constructed for high shock and vibration environments
- ▶ Rugged weather-resistant enclosure
- ▶ Integrated check tag
- ▶ Corrosion and chemical resistant
- ▶ Strain relief kit for high vibration applications

### Applications

- ▶ Train positioning
- ▶ Rail Automatic Equipment Identification (AEI)

# AA3233-004 On-Board Heavy Rail Antenna

## COMMUNICATIONS

### Frequency Range

902 to 928 MHz

### Gain (peak, near field)

10 dBi

### Polarization

Linear, parallel with longer side

### VSWR

<2.0:1

### Impedance

50 ohms nominal

### Beamwidth

E-Plane: 33°

H-Plane: 80°

## HARDWARE FEATURES

### Connectors

**Antenna:** right angle N-type female

**Checktag:** receptacle, jam nut

## PHYSICAL

### Dimensions

**Size:** 68.2 x 28.6 x 8.7 cm (26.9 x 11.3 x 3.4 in)

**Weight:** 7.64 kg (16.4 lbs)

### Enclosure

Weather-resistant radome

## ENVIRONMENTAL

### Operating Air Temperature

-40°C to +50°C (-40°F to +122°F)

### Humidity

EN60068-2-30 Variant 1

### Vibration Tolerance

AREMA Part 11.5.1 Class G & H

EN 61373:2010 Category 1B & 2

4 G<sub>RMS</sub> 5 to 500 Hz

### Shock Tolerance

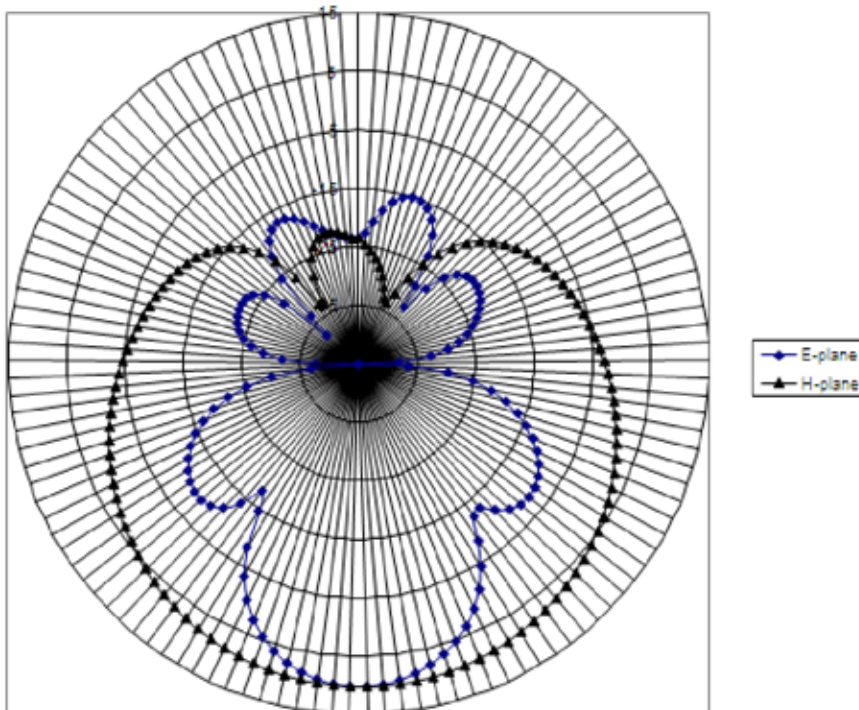
AREMA Part 11.5.1 Class G & H

EN 61373:2010 Category 1B & 2

30 G peak x 18 ms

## MODEL PART NUMBERS

**12-3233-004** On-Board Heavy Rail Antenna with Integrated Check Tag



Antenna Field Pattern

## For more information:

### Sales Support

800.923.4824

### Technical Support

505.856.8007