

Welded Seal Double-Ended Shear Beam Load Cell

FEATURES

- Rated capacities of 15,000 to 125,000 lbs
- Stainless steel, welded seal construction
- Center-link recessed pivot load
- Insensitive to side loads and bending moments
- Load cells have matched outputs for multi-cell systems
- Integrated conduit adaptor
- Trade certified for NTEP Class III: 5000 divisions and Class III-L: 10000 divisions
- Sensorgage™ sealed to IP68 and IP69K standards
- Factory Mutual System Approved for Classes I, II, III; Divisions 1 and 2; Groups A through G.
- Non-incendive ratings (without barriers)
- **Optional**
 - 65058-TSA companion assemblies for vehicle scales
 - 65069-TWA companion assemblies for vessel weighing



65069-TWA



65058-TSA



APPLICATIONS

- Hostile environments:
 - Food and beverage processing, Chemical processing, Pharmaceutical and biomedical processing
- High performance weighing modules and assemblies
- Tank and reactor weighing
- Batching, blending and mixing systems

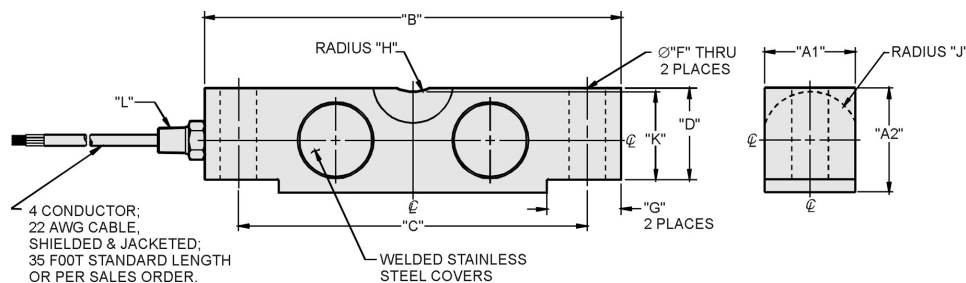
Protected to meet IP68 and IP69K requirements, the construction of the 65058S load cell uses double-redundant sealing methods, to ensure long reliable service and constant calibration.

DESCRIPTION

Model 65058S is specifically designed to be installed in demanding environments. It is especially suitable for the food processing, chemical and pharmaceutical industries.

Additional sense wires compensate for changes in lead resistance due to temperature change and/or cable extension. Complete compensation of changes in lead resistance is achieved by feeding this voltage into the appropriate electronics.

OUTLINE DIMENSIONS in inches



Wiring

- + Excitation Red
- Excitation Black
- + Output Green
- Output White

CAPACITY	A1	A2	B	C	D	F	G	H	J	K	L
15K, 20K, 25K	1,69	1,94	7,75	6,5	1,7	0,68	1,38	R0.75	R0.90	1,63	¼ - 18 NPT
35K, 40K, 50K, 60K, 75K	2,44	2,94	10,3	8,5	2,65	1,06	1,93	R1.00	R1.37	2,54	½ - 14 NPT
100K	2,44	3,44	10,3	8,5	2,65	1,06	1,93	R1.00	R1.37	2,55	½ - 14 NPT
125K	2,9	3,86	15,3	12,8	3,43	1,62	3,13	R1.50	R1.80	3,3	½ - 14 NPT

Capacities are in pounds.

Welded Seal Double-Ended Shear Beam Load Cell

SPECIFICATIONS				
PARAMETER	VALUE			UNIT
Rated capacity—R.C. (E_{max})	15k, 20k, 25k, 35k, 40k, 50k, 60k, 75k, 100k, 125k ⁽¹⁾			lbs
NTEP/OIML accuracy class	NTEP III	NTEP IIII	Standard	
Maximum no. of intervals (n)	5000 multiple	10000 multiple		
$Y = E_{max}/V_{min}$	See NTEP cert. 86-046A3			Maximum available
Rated output—R.O.	3.0			mV/V
Rated output tolerance	±0.25			±% mV/V
Zero balance	1.0			±% FSO
Combined error	0.02	0.02	0.03	±% FSO
Non-repeatability	0.01			±% FSO
Creep error (20 minutes)	0.03	0.03	0.03	±% FSO
Temperature effect on zero	0.0015	0.0010	0.0015	±% FSO/°F
Temperature effect on output	0.0008	0.0008	0.0008	±% of load/°F
Compensated temperature range	14 to 104 (–10 to 40)			°F (°C)
Operating temperature range	0 to 150 (–18 to 65)			°F (°C)
Storage temperature range	–60 to 185 (–50 to 85)			°F (°C)
Sideload rejection ratio	500:1			
Safe sideload	100			% of R.C.
Maximum safe central overload	150			% of R.C.
Ultimate central overload	300			% of R.C.
Excitation, recommended	10			VDC or VAC RMS
Excitation, maximum	25			VDC or VAC RMS
Input impedance	686–714			Ω
Output impedance	699–707			Ω
Insulation resistance at 50 VDC	>1000			MΩ
Material	Stainless steel			
Environmental protection	IP68, IP69K			

Notes

⁽¹⁾ NTEP approval 20–125k lbs only
 FSO—Full Scale Output
 All specifications subject to change without notice.

CERTIFICATION MARKINGS

FM Approval markings (USA and Canada)
 IS Class I, II, III, Division 1, Groups A, B, C, D, E, F and G;
 NI Class I, Division 2, Groups A, B, C, and D,
 DIP, Class II, III, Division 2, Groups F and G;
 T4;
 Ta = –25°C to +66°C