

- > Ø 25 and 40 mm
- > Ideally suited for vacuum selected liquid transfer applications through the piston rod
- > Non-rotating and telescopic piston rod provides accurate, repeatable component orientation
- > Non-corrosive specification
- > Buffer cushioning
- > Direct attachment of vacuum pumps and suction cups



### Technical features

**Medium:**

Compressed air, filtered, lubricated or non-lubricated

**Standard:**

Ø 25: ISO 6432 (except piston rod)

**Operation:**

Double acting with buffer cushioning, magnetic piston

**Operating pressure:**

1 ... 10 bar (14 ... 145 psi)

**Cylinder diameter:**

25, 40 mm

**Strokes:**

500 mm max.

**Operating temperature:**

+80°C max (+176°F)

Air supply must be dry enough to avoid ice formation at temperatures below +2°C (+35°F)

**Materials:**

Barrel:  
Ø 25: stainless steel (austenitic)  
Ø 40: anodised aluminium  
End covers: anodised aluminium  
Piston rod: stainless steel (austenitic)  
Buffer and wiper: PUR  
Piston seals:  
Ø 25: NBR, Ø 40: PUR  
'O'-rings: NBR

### Technical data

Cylinder Ø (mm)	25	40
Port size	G 1/8	G 1/4
Piston rod Ø (mm)	12	16
Piston rod thread	M22x1,5	M38x1,5
Theoretical thrusts at 6 bar outstroke (N)	287	737
Theoretical thrusts at 6 bar instroke (N)	238	655
Air consumption at 6 bar outstroke (l/cm)	0,035	0,086
Air consumption at 6 bar instroke (l/cm)	0,028	0,077

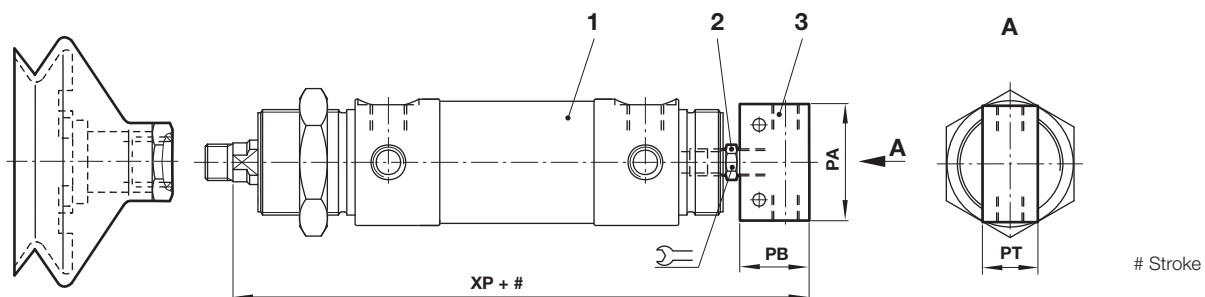
### Option selector

VSM/556★★/N2/★★★

Cylinder Ø	Substitute	Strokes (mm)
25	25	500 max.
40	40	

### Example

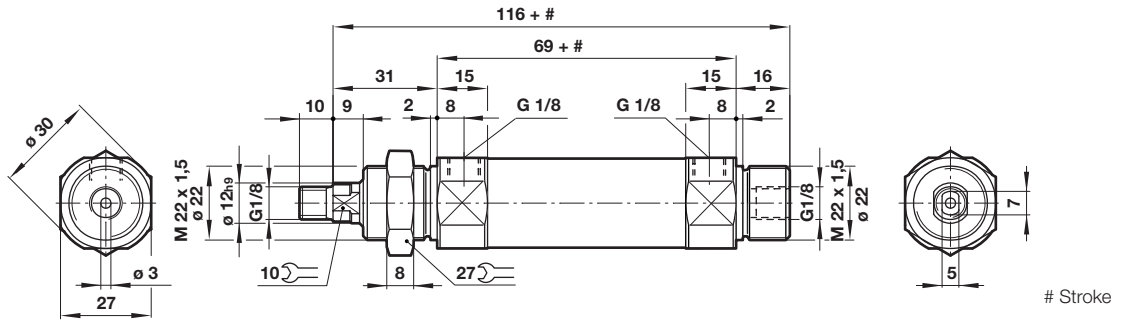
#### Application with vacuum pumps and cups



Cylinder Ø	Pos. 1 Cylinder	Pos. 2 Fitting	Pos.3 Vacuum pump	PA	PB	PT		XP
25	VSM/55625/N2	150201818	M/58112/09	42	25	20	11	147
40	VSM/55640/N2	150201818	M/58112/09	42	25	20	11	200
		150202818	M/58112/11	62	30	30	14	207

**Dimensions**

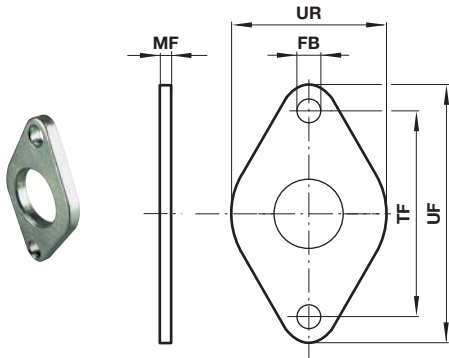
VSM/55625/N2  
Ø 25 mm



Cylinder Ø	Weight (kg)	
	at 0 mm	per 25 mm
25	0,19	0,028

**Mountings**

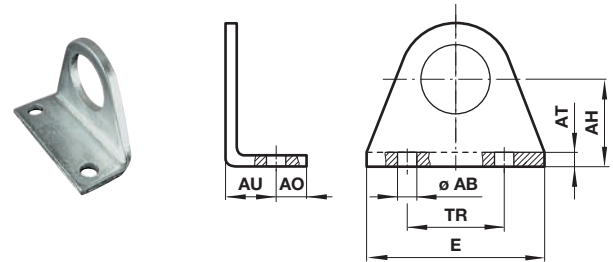
Front or rear flange G and B



Ø	Ø FB	MF	TF	UF	UR	kg	Model (B, G)
25	6,6	5	50	63	38	0,05	M/P19409

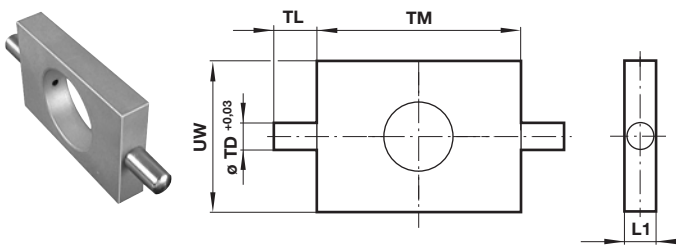
**Foot C**

Conforms to DIN ISO 6432



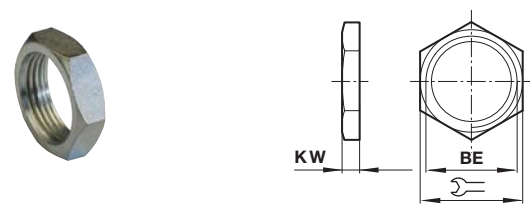
Ø	Ø AB	AH	AO	AT	AU	E	TR	kg	Model (C)
25	6,6	25	7,5	4	16	53	40	0,06	M/P19406

**Front or rear detachable trunnion FH**



Ø	L1	Ø TD +0,03	TL	TM	UW	kg	Model (FH)
25	8	6	10	46	30	0,07	QM/8020/34

**Nose nut N**



Ø	BE		KW	kg	Model (N)
25	M22x1,5	27	8	0,02	M/P13615