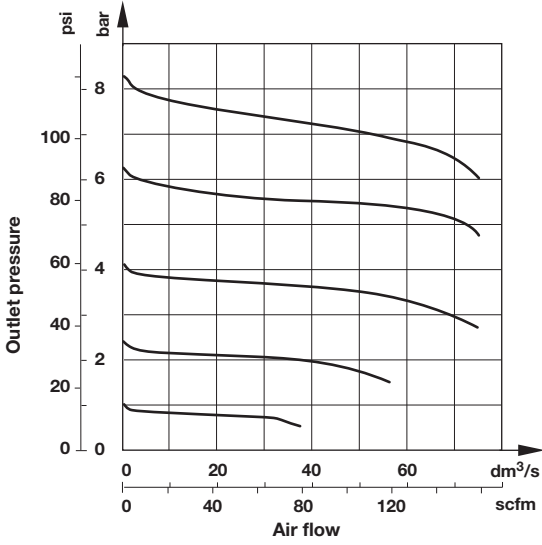
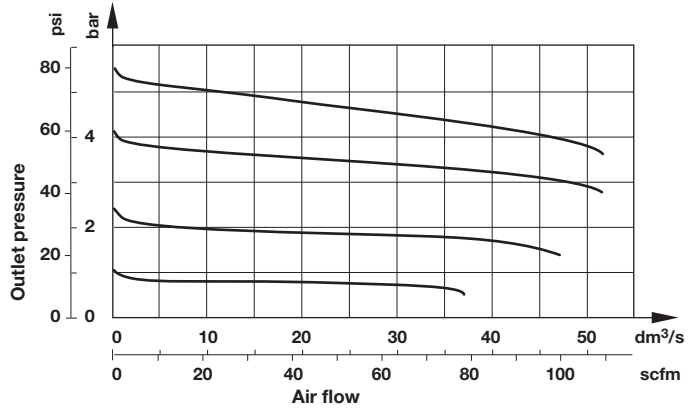


Flow characteristics

Inlet pressure: 10 bar (145 psi)
Port size: 3/8"



Inlet pressure: 7 bar (101 psi)
Port size: 3/8"



Accessories

<p>Wall mounting bracket</p> <p>Page 4 4424-50</p>	<p>Neck mounting bracket</p> <p>Page 4 4461-50</p>	<p>Panel nut</p> <p>5191-88</p>	<p>Quikclamp®</p> <p>Page 3 4314-51</p>	<p>Quikclamp with wall bracket®</p> <p>Page 3 4314-52</p>	<p>Tamper resistant kit</p> <p>4455-51</p>
<p>Quikmount pipe adaptor *1)</p> <p>Page 3 G1/4: 4315-09 G3/8: 4315-10 G1/2: 4315-11 1/4 PTF: 4315-01 3/8 PTF: 4315-02 1/2 PTF: 4315-03</p>	<p>Porting block with three alternative 1/4" ports</p> <p>Page 3 G1/4: 4316-52 1/4 PTF: 4316-50</p>	<p>2/2 Shut-off valves (for full technical specification see datasheet 8.180.600)</p> <p>Page 4 G1/4: T73B-2GA-P1N G3/8: T73B-3GA-P1N G1/2: T73B-4GA-P1N 1/4 PTF: T73B-3AA-P1N 3/8 PTF: T73B-2AA-P1N 1/2 PTF: T73B-4AA-P1N</p>	<p>3/2 Shut-off valves (for full technical specification see datasheet 8.180.600)</p> <p>Page 4 G1/4: T73T-2GA-P1N G3/8: T73T-3GA-P1N G1/2: T73T-4GA-P1N 1/4 PTF: T73T-3AA-P1N 3/8 PTF: T73T-2AA-P1N 1/2 PTF: T73T-4AA-P1N</p>		

*1) Please use a Quikmount pipe adaptor if the Quikclamp be mounted at inlet or outlet side.

Pressure switch

Porting block for pressure switch



Page 3

0523110000000000

Pressure switch (0,5 ... 8 bar)



0881300000000000

Padlock

Padlock (brass) with two keys *1)



0613633000000000

Service kits

Service kit



R73G-KITR

*1) For shut-off valves and tamper resistant kit

Gauge

Center back connection, white face
 (for full technical specification see datasheet 8.900.900)



Pressure range bar *1	Mpa	psi	Ø	Thread size	Model
0 ... 6	0 ... 0,6	0 ... 84	50 mm	R1/8	18-015-012
0 ... 10	0 ... 1	0 ... 145	50 mm	R1/8	18-015-013
0 ... 25	0 ... 2,5	0 ... 362	50 mm	R1/8	18-015-014

*1) primary scale

Center back connection, black face
 for North America
 (for full technical specification see datasheet 8.900.900)



psig *1	bar	Mpa	Ø	Thread size	Model
0 ... 60	0 ... 4	0 ... 0,4	2" (50 mm)	1/4 NPT	18-015-208
0 ... 160	0 ... 11	0 ... 1,1	2" (50 mm)	1/4 NPT	18-015-209
0 ... 300	0 ... 20	0 ... 2,1	2" (50 mm)	1/4 NPT	18-015-210

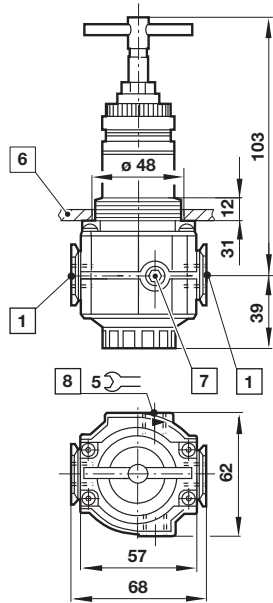
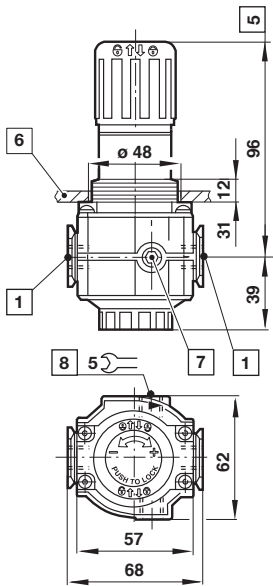
*1) primary scale

Drawings

Standard

T-bar

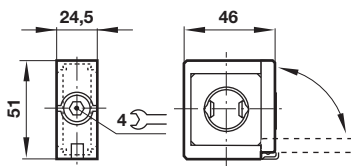
Dimensions in mm
 Projection/First angle



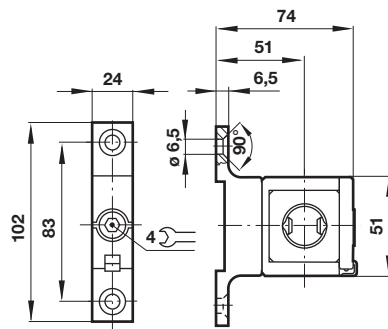
- 1 Main ports 1/4", 3/8" or 1/2"
- 5 Reduces by 4 mm with knob in locked position
- 6 Panel thickness 2 ... 6 mm
- 7 Gauge port Rc1/8 for ISO G and 1/4 PTF for PTF main ports
- 8 Alternative gauge port plugged

Accessories

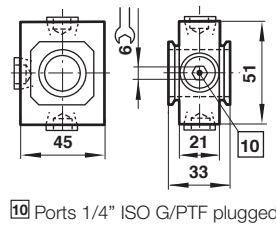
Quikclamp®



Quikclamp® with wall bracket

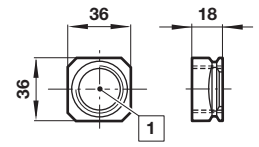


Porting block



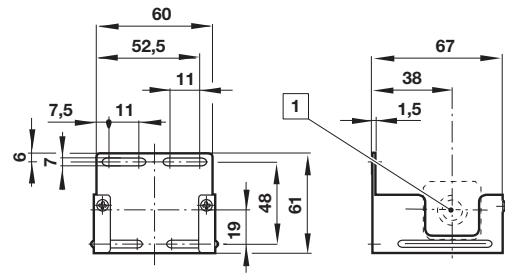
- 10 Ports 1/4" ISO G/PTF plugged

Pipe adapter



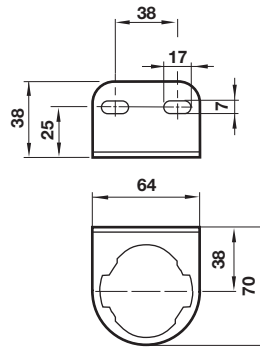
- 1 Main ports 3/8", 1/2" or 3/4" ISO G/PTF

Wall mounting bracket



1 Main ports

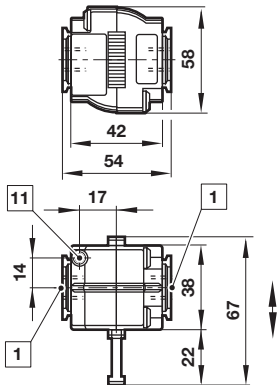
Neck mounting bracket



Dimensions in mm
Projection/First angle

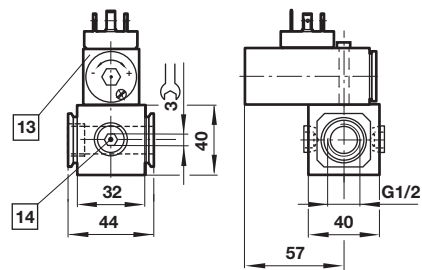


Shut-off valves



1 Main ports 1/4", 3/8" or 1/2" ISO G/PTF
12 Exhaust port M5 at 3/2 valve only

Porting block for pressure switch



13 Pressure switch is not in scope of delivery
14 Alternative G1/2 ports plugged