

PM-212

Pocket optical power meter USB probe

NEW!
**THE SMALLEST
IN THE MARKET**

Description:

The PM 212 optical power meter is a small, pocket size low cost item. The small size does not prevent the optical meter fulfilling all technical requirements for field equipment. The tester can be used as pocket power meter or as USB probe, part of testing workstation. It can be placed within rack mount ODF's with the display on the top or on the side. The Li-Pol rechargeable battery ensures long term working time with a minimum life time of 2 years. The unit is able to store 100 measurements which can be uploaded to PC and managed with SmartProtocol software or Data Exporter.



PM-212

Features:

- Two functions: Portable power meter
USB probe – accessory of Testing Workplace
- Small size, light weight
- SM and MM fiber testing
- Six working wavelengths
- Absolute and Relative optical power measurement
- Internal two level memory, capacity up to 100 measurements
- SmartProtocol SW – Test reports creating
- Data Exporter – data download to Excel sheet
- USB port for:
 - USB probe - full control via simple commands
 - charging the battery
 - data upload to PC
 - firmware upgrade
- Build-in Li-Pol rechargeable battery
- Battery status indicator, Auto Off

Standard accessories:

- Power meter
- Universal 2.5 mm adapter (TE-ADP-250)
- Power charging adapter
- Traceable calibration certificate
- USB cable
- SmartProtocol SW
- Soft case
- Hard plastic case TE-HC-01, 265 x 270 x 90 mm



TE-HC-01

Specifications:

Photodetector	1 mm InGaAs
Working wavelengths	850, 1300, 1310, 1490, 1550, 1625 nm
Uncertainty	± 5%
Resolution	0.01
Dynamic range	-60 dBm to +10 dBm -53 dBm to +10 dBm
Dimensions	24 x 47 x 71 mm
Weight	Less than 90 g
Temperature	operating -10 to +50 °C storage -40 to +70 °C
Humidity (non cond.)	0 – 95%
Operating temperature	-10 to +50 °C
Battery working time	> 75 hrs
Battery life time	> 2 years
Compliant with RoHS-requirements (2002/95/EG, 27.01.2003)	

Note:

can be customized
1310, 1550 nm @ -20dBm

1300, 1310, 1490, 1550, 1625 nm
850 nm
including 2.5 mm universal adaptor
battery loaded

between battery charging

Options - changeable input adapters:



Other types available on request:

- | | |
|------------|-------------|
| TE-ADP-SC | SC adaptor |
| TE-ADP-FC | FC adaptor |
| TE-ADP-ST | ST adaptor |
| TE-ADP-DIN | DIN adaptor |
| TE-ADP-SMA | SMA adaptor |
| TE-ADP-LC | LC adaptor |
| TE-ADP-MU | MU adaptor |

Ordering code: **PM-212 + (options)** standard tester

Application:

- Optical networks testing
- Test reports creating

SmartProtocol compatible (refer to TEQ_02-07_EN-SmartProtocol)

Date: 19.6.2007
Operator: Magda Rychnovská
Company: OPTOKON Co. Ltd., spol. s r.o.

OPTOKON Co., Ltd.
E-mail: OPTOKON@OPTOKON.CZ
WWW: <http://WWW.OPTOKON.CZ>

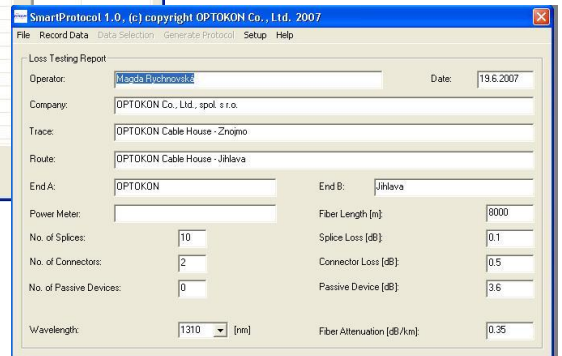
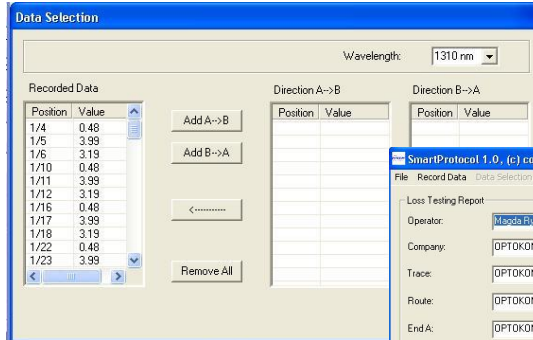
Loss Testing Report

Trace: OPTOKON Cable House - Znojmo
Route: OPTOKON Cable House - Jihlava
End A: OPTOKON End B: Jihlava

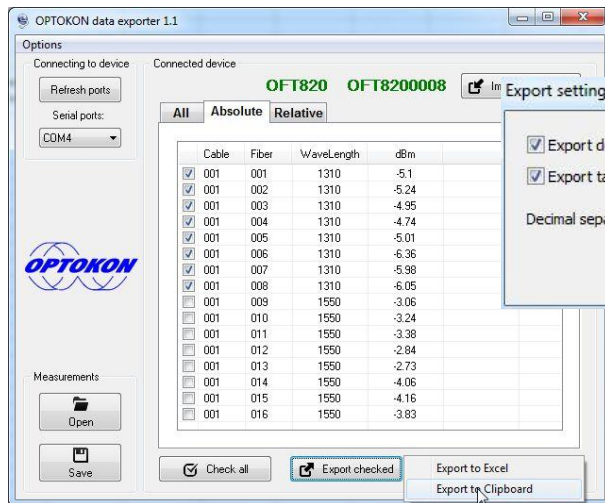
Power Meter: PM420 PM4207090 Fiber Length: 8000 m
No. of Splices: 10 Splice Loss: 0.1 dB
No. of Connectors: 2 Connector Loss: 0.5 dB
No. of Passive Devices: 0 Passive Device: 3.6 dB
Fiber Attenuation 1310 nm: 0.35 dB/km Loss Limit 1310 nm: 4.80 dB
Fiber Attenuation 1550 nm: 0.20 dB/km Loss Limit 1550 nm: 3.60 dB

Table of Measured Values

Fiber	Loss (dB) 1310 nm			Loss (dB) 1550 nm			Note
	A-B	B-A	Avg	A-B	B-A	Avg	
1	4.32	4.24	4.28	3.48	3.42	3.45	PASS
2	4.43	4.41	4.42	3.56	3.51	3.54	PASS
3	4.59	4.47	4.53	3.26	3.22	3.24	PASS
4	4.12	4.21	4.17	3.28	3.15	3.23	PASS
5	4.52	4.54	4.53	3.33	3.31	3.32	PASS
6	4.82	4.81	4.81	3.69	3.72	3.70	FAIL
7	4.15	4.25	4.20	3.24	3.26	3.25	PASS
8	4.26	4.26	4.26	3.41	3.41	3.41	PASS
9	4.36	4.35	4.37	3.27	3.27	3.27	PASS
10	4.68	4.48	4.58	3.75	3.51	3.63	FAIL
11	4.11	4.13	4.12	3.27	3.16	3.23	PASS
12	4.37	4.24	4.30	3.59	3.48	3.54	PASS
Avg	4.40	4.37	4.38	3.43	3.37	3.40	
Max	4.82	4.81	4.81	3.75	3.72	3.70	
Min	4.11	4.13	4.12	3.24	3.18	3.23	



DataExporter compatible (refer to TEQ_08-13_EN-DataExporter)



	A	B	C	D	E
1	OFT820	OFT8200008			
2	Cable	Fiber	WaveLength	dBm	
3	1	1	1310	-5.1	
4	1	2	1310	-5.24	
5	1	3	1310	-4.95	
6	1	4	1310	-4.74	
7	1	5	1310	-5.01	
8	1	6	1310	-6.36	
9	1	7	1310	-5.98	
10	1	8	1310	-6.05	
11					
12					
13					