

SB67 (G 1/2, G 3/4)

FEATURES

- I Shavo's' Filter-Regulator Model SB67 is designed as a high-performance product for instrument air use in corrosive atmospheres.
- I Applications include marine environments, oil and gas production, chemicals and food processing, medical analysis etc.
- CE, EAC [CUTR10 (equivalent to GOST R & K)] approved.
- SIL 3 capable as per IEC 61508
- I External Metallic parts meet NACE standard MR-01 75*

(*National Association of Corrosion Engineers MR-0175 defines requirements for sulphide stress cracking resistant materials used in oilwells and other corrosive environments.)



PARAMETERS	SPECIFICATIONS
Fluid	Compressed Air
Pipe Sizes	1/2", 3/4"
Port Thread	NPT - Standard BSPT, BSP - Optional
Max. Inlet Pressure	with Metal bowl (Manual drain) - 435 psig (30 bar) with Metal bowl (Automatic drain) - 150 psig (10 bar)
Max. Operating Temp. (Ambient)	+80°C (for Nitrile Elastomer)
Particle Removal	25 micron - std 5,40 micron - optional
Filter Element Material	SS 316 - Standard Sintered Bronze/Plastic - Optional
Material of Construction :	Stainless Steel as per AISI 316L
Body, Bonnet, Bowl	SS316L with NACE compliance (MR 0175)
Internal Parts	SS316L
External Parts	SS 316L with NACE compliance MR 0175
Diaphragm Assembly	Synthetic Rubber with PTFE Protection
Elastomers	Low temperature Nitrile (LNBR) -60 to +80°C EPDM -35 to +120°C Fluorocarbon (Viton-FKM) -20 to +180°C Nitrile (NBR) -20 to +80°C
Standard Nominal Flow Rate (At supply pr. of 150psi 14.5 psi drop in sec. pressure of 87 psi)	1/2" : 192 scfm (91 dm ³ /sec) CV (3.62) 3/4" : 340 scfm (162 dm ³ /sec) CV(6.42)
Bowl Capacity	160 ml
Drain	Manual -Std Automatic : Optional
Type	Relieving - Standard Non-Relieving - Optional
Pressure Adjustment	Hex headed adjusting screw - Standard 'T' handle - Optional
Regulated Sec. Pr. Ranges	15-150 psi (1.0-10.0 bar) - Standard 3 - 30 psi (0.21 to 2.10 bar) - Optional 6-60 psi (0.40-4.0 bar) - Optional 12.5-125 psi (0.87-8.75 bar) - Optional 25 - 250 psi (1.70 -17.5 bar) - Optional
Gauge Port (2 nos.)	1/4" BSPT (Fe) - Optional 1/4" NPT (Fe) - Std.
Mounting	Panel Mount - Std. Wall Mounting Bracket - Optional
Weight	3.0 Kgs

Pressure Gauge (scale) : Kg/cm² (PSI) - Standard (For Domestic Market)
Bar (PSI) - Standard (Export)

Note :

- 1) PM nut, Mounting bracket, Grub screw will not have NACE MR 0175 approval.
- 2) Pressure gauge will not have CE, EAC, SIL3, NACE MR 0175 approval.
- 3) Automatic drain available with Nitrile elastomers only.

SB67 (G 1/2, G 3/4)

Option Selector

Sample Model Number → **S B 6 7 - 4 0 0 - M G L A - N H - X X X - X X X**

Position → **0 1 2 3 - 4 5 6 - 7 8 9 10 - 11 12 - 13 14 15 - 16 17 18**

0 S = Shavo

1 Product B = Filter Regulator Combination Unit

2 3 Series 67 = SS 316L (MOC)

4 Port Size
4 = 1/2"
6 = 3/4"

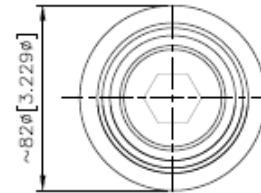
5 6 Options

	NITRILE ELASTOMER		EPDM ELASTOMER		VITON ELASTOMER		Low Temp. Nitrile elasto	
	REL	NON REL	REL	NON REL	REL	NON REL	REL	NON REL
No Gauge	00	10	[01]	[11]	[02]	[12]	[04]	[14]
With Gauge (SS)	21	31	[22]	[32]	[23]	[33]	[25]	[35]

7 Drain
M = Manual
A = Automatic (available with Nitrile elastomer only)

8 Filter Element

	Plastic	Sintered Bronze	S.S. 316
5 micron	1	4	7
25 micron	2	5	8
40 micron	3	6	9



9 Sec. Pr. Range

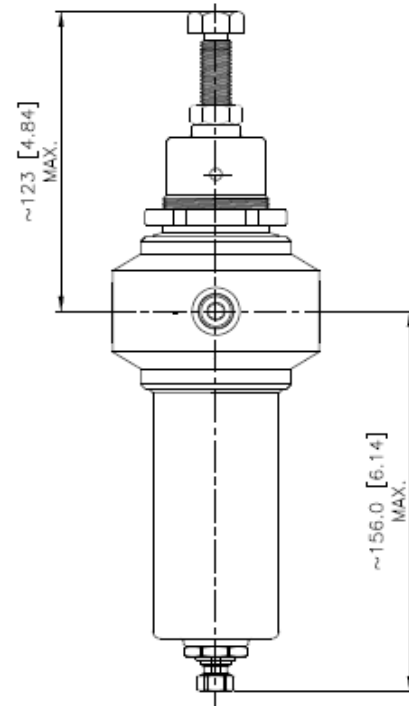
C	3-30 psi (0.21 to 2.10 bar)
F	6 - 60 psi (0.4 to 4 bar)
L	12 - 125 psi (0.87 to 8.75 bar)
M	15 - 150 psi (1.0 to 10.0 bar)
S	25 - 250 psi (1.70 to 17.5 bar)

10 Port Thread

	Main Port	Gauge Port
A	NPT	BSPT
B	BSPT	BSPT
G	BSP	BSPT
N	NPT	NPT

11 Mounting
N = No Mounting Bracket
B = Wall Mounting Bracket Fitted (SS)
[P] = 2" Pipe Mounting Bracket Fitted (SS)

12 Pressure Adjustment
H = Hex Headed Screw (SS316L)
[T] = 'T' Handle (SS 316L)



SB67 (G 1/2 ,G 3/4)

13 14 15 Test / Approval

C	0	0	CE
C	0	1	UKCA
C	0	2	CE,UKCA
E	0	0	EAC
E	0	1	EAC, UKCA
S	0	0	SIL3
S	0	1	SIL3, UKCA
G	0	0	CE, EAC
G	0	1	CE, EAC, UKCA
H	0	0	CE, SIL3
H	0	1	CE, SIL3, UKCA
K	0	0	CE, EAC, SIL3
K	0	1	CE, EAC, SIL3, UKCA
X	X	X	Standard Units Without Any Certificatio / Approval
[O]	[0]	[0]	Other Customer Special Requirement if Any

16 17 18 Compliance

X	X	X	Standard Unit Without any Compliance
A	0	1	RoHS 3 Compliance
A	0	2	REACH Compliance
A	0	3	Copper Free (Only Applicable Aluminium Version)
A	0	4	RoHS3, REACH Compliance
A	0	5	RoHS3, REACH, Copper Free (Only Applicable for Aluminium Version)
A	0	6	RoHS3, Copper Free (Only Applicable for Aluminium Version)
A	0	7	REACH, Copper Free (Only Applicable for Aluminium Version)

**Note: Option shown in the [] bracket are special, Please contact Sales HQ/Manufacturing.
Panel mounting nut is standard for all units.
* [] option available with Hex headed pressure adjustment only.**