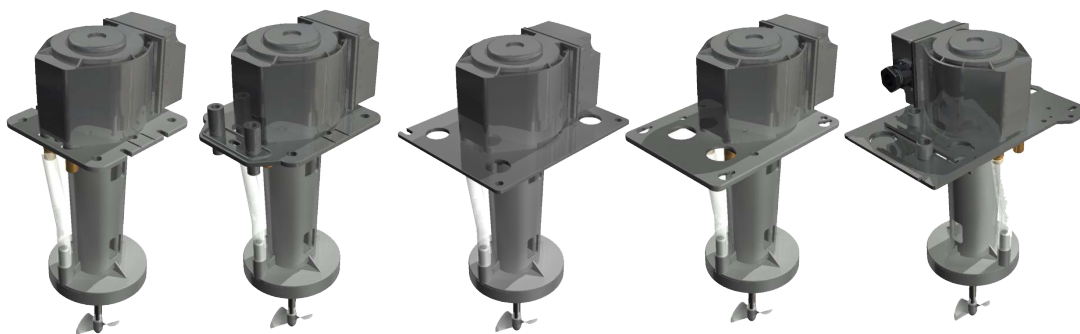
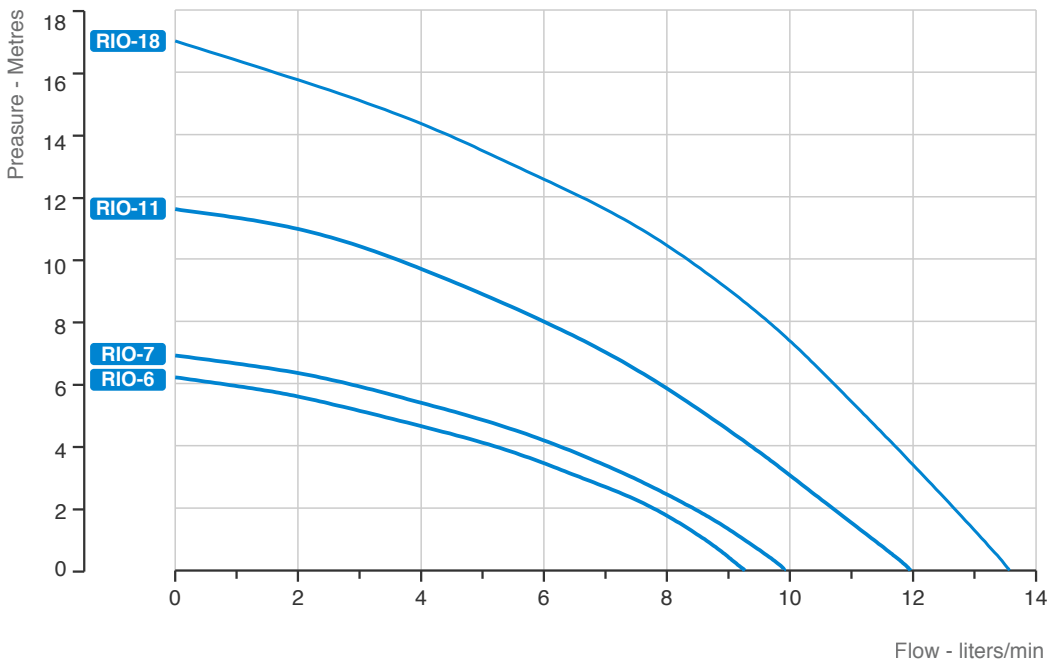
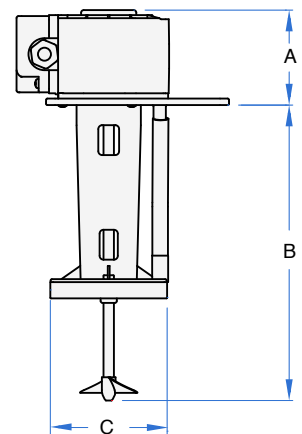
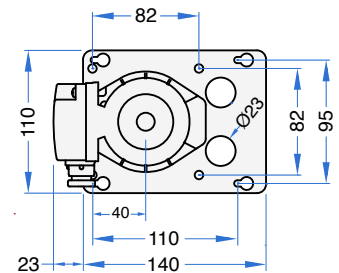
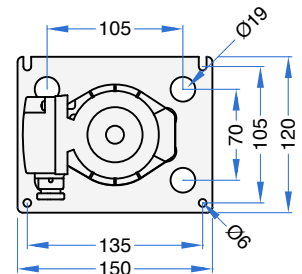
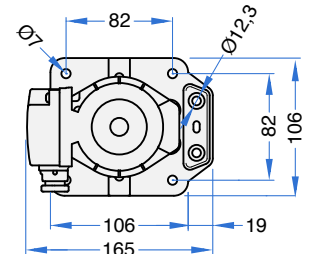
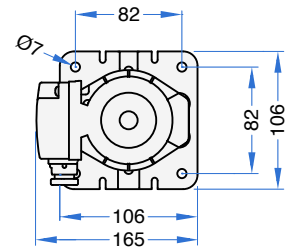


*RIO series represents innovative, highly efficient and reliable pumps, with **extremely compact dimensions** and long life expectancy. These motor-pumps are designed for **internal or external installation**. The complete encapsulation of the motor guarantees the **full protection of the windings from dampness**.*

- Pump** AGITATOR-PUMP with immersed vertical axis.
- Windings** Single-phase motor with Class F.
- Motor body** Motor covered by plastic shell in PA66 30% glass fiber.
- Protection** IP 55 degree of protection from liquids seepage.
- Safety** Built-in thermal motor protection system.
- Ball bearings** Ø 8mm NSK or SKF bearings in a semi-rigid and noise-insulated silicone casing.
- Motor shaft** AISI 303 INOX steel Ø 8mm.
- Fastening parts** INOX steel or anti-oxidant materials.
- Motor parts** Thermoplastic motor parts resistant to high temperature.
- Cooling system** Water cooled pump.
- Water connection** Pipe connection Ø 9,5/12,3mm compatible with John Guest fittings.
- Operation** Power supply 220 & 230Volts - 24 hours a day non stop.
- Regulations** Complying to EN60335-2-41 and WEEE/RoHs directives.
- Note** PATENTED device. Read the instruction booklet for a correct set up and use.



TYPE	Volt	Hz	Amp	Watt (IN)	Rpm	A	B	C	Propeller Ø (mm)	Weight Kg
RIO-6	230	50	0,18	45	2800	75	185	78	50 2 Blades x 15°	1,45
RIO-7	230	50	0,20	48	2800	75	220	90	50 2 Blades x 15°	1,50
RIO-11	230	50	0,35	77	2800	85	210	90	50 2 Blades x 15°	1,90
RIO-18	230	50	0,52	104	2800	100	200	90	50 2 Blades x 15°	2,40