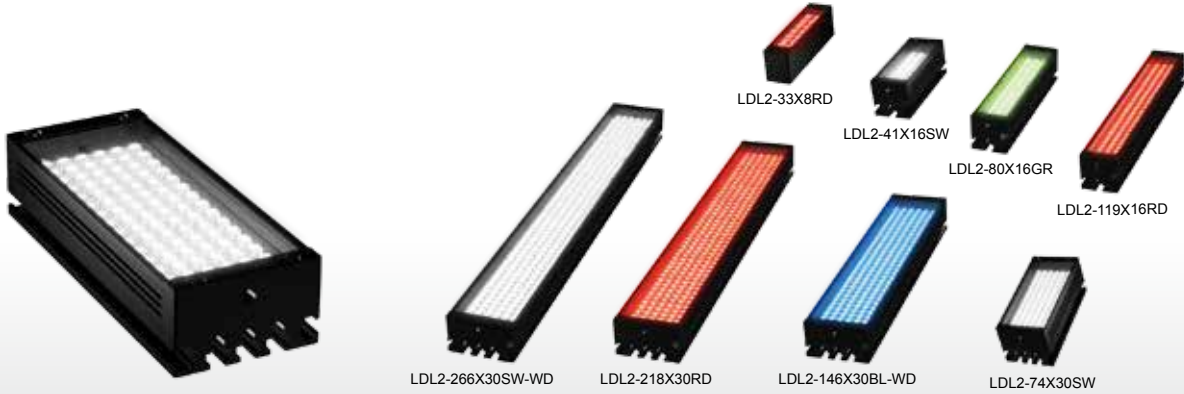


Bar Lights

LDL2 series

Provides direct light from an emitting part equipped with LEDs in straight lines



Applications

Various inspections for reading text, visual inspection for damage on long and thin workpieces, damage inspection for metal with hairline finishing, light source for a line sensor camera, and various inspections to detect foreign material, etc.

Rich lineup with 15 types and 61 models

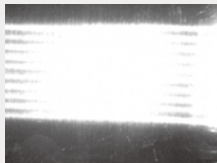
We have a lineup of 15 types and 60 models, such as combinations of the size and emitting width of the emitting surface, directional characteristics, and the emitted color.

Compatible with a wide range of uses

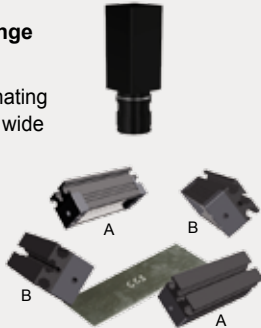
You can freely adjust the illuminating direction and angle for use in a wide range of uses.

Because Bar Lights can freely adjust their illuminating direction and angle to match the workpiece, they can provide the optimal image.

Illuminating image from direction A



Illuminating image from direction B



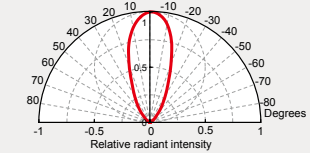
Bar Lights that use surface-mounted LEDs

These are Bar Lights that use surface-mounted LEDs. We provide the narrow type, which performs convergent illumination for a narrow space, and the wide type (-WD) which illuminates a wide space.

Select the directional characteristics of a narrow type or wide type

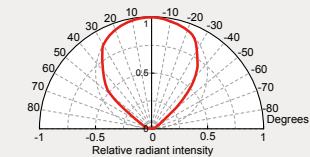
Directional characteristics of the Narrow Type

Zoomed-in view of the emitting surface



Directional characteristics of the Wide Type (-WD)

Zoomed-in view of the emitting surface

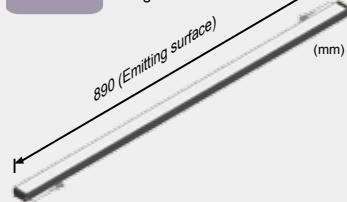


Custom orders

Please contact your CCS sales representative.

E.g.: Different shape

Format Create a Light Unit with a long size



Customizable items

External/internal diameter

Wavelength/color

Increase output

Cable length

Illuminating angle

Format/material

Connector format

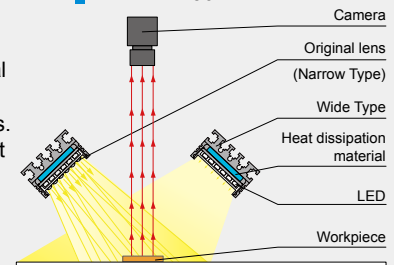
Installation/mounting

Etc.

Example configuration

Achieved light with a narrow directionality using the original lens located in front of the LEDs. Illuminates direct light from any angle.

LDL2-74X30



➤ Imaging example : Imaging of damage in sheet metal (hairline finishing)



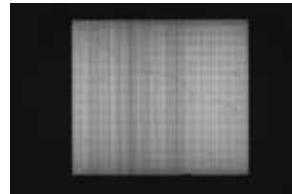
Description	Visual inspection
Workpiece	Aluminum sheet (hairline finishing)
Before the proposal	LED Bar Light
After the proposal	LDL2-74X30RD Proposed the optimal illuminating angle and illuminating direction
Result	Extracts only the damage

Workpiece image



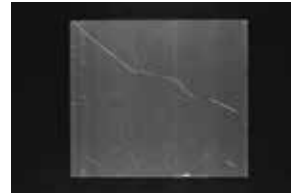
Aluminum sheet
(hairline finishing)

LED Bar Light



Due to reflection from the hairline finishing surface, it is difficult to form an image of the damage.

LDL2-74X30RD



Surface reflection is reduced and a clear image of the damage can be made.

➤ Imaging example : Exterior imaging of confectionery packaging

Workpiece image



Confectionery packaging

LED Ring Light



Due to reflection from the surface, it is difficult to form an image of the characters.

LDL2-119X16SW



Surface reflection is removed and a clear image of the characters can be made.

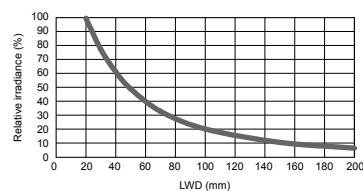
➤ Data: Relative irradiance graph/Uniformity graph (Representative example)

* The graph included is for reference only and does not guarantee the quality of this product.

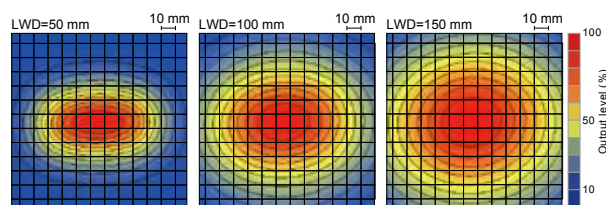
LDL2-74X30SW (Narrow type)

Relative irradiance graph^{*1} (LWD Characteristics)^{*2}

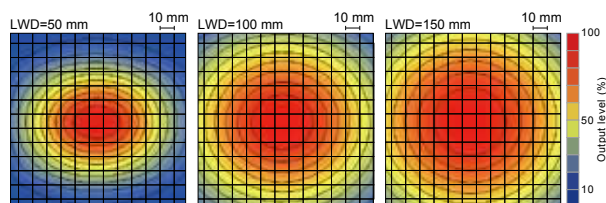
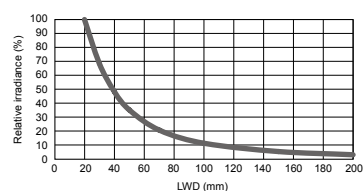
- *1: Irradiance on the optical axis
*2: Illuminating distance from the Light Unit to the workpiece



Uniformity graph (Relative irradiance)



LDL2-74X30SW-WD (Wide type)



Direct Lighting

Convergent Lighting

Diffused Lighting

Direct Lighting

Diffused Lighting

Diffused Lighting

Collimated Lighting

Ultraviolet Lighting

Infrared Lighting

Spot Lighting, Etc.

Convergent Lighting

Diffused Lighting

Oblique Angled Lighting

Lenses

LDR2
LDR2-LA
LDR-LA1
SQR
SQR-TP

HLDR-IP

HPR2
HPR
LFR
LKR
FPR
FPQ2LDL2
LDLB
HLDL2TH
LFL
HPD2
HPD
LDM2
LAV
PDMLFX2
LFX3
LFX2MSU
MFUUV2
UV
LNSP-UV-FN

IR2

HLV2
LV
LSP
HFS/HFR
HLV2-NR
HLV2-3M-RGB-3WPFB2
PFBRLNSP
CU-LNSP
LNSP-FN
LN/LN-HKLNSD
LND2
HLND
LT
LN/HLDN

LNIS

LNIS-FN
Telecentric Lens
Macro Lens

LDL2 series

Lineup (Standard Products) * End of the model name: -WD: Wide type

	Model name	LED color	Emitting surface size	Power consumption	Peak wavelength/ correlated color temperature	Options	Recommended Control Units	Weight
Emitting width: 8 mm	LDL2-33X8RD*1	Red	33×8 mm	24 V / 1.3 W	635 nm	Diffusion plate Polarization plate Bracket	PD3 CC-ST-1024 PSB PTU2* <small>* Can only use red, white, blue, and green.</small>	20 g
	LDL2-33X8SW*1	White		24 V / 0.8 W	6,600 K			
	LDL2-33X8BL*1	Blue			470 nm			
	LDL2-33X8GR*1	Green			525 nm			
	LDL2-33X8IR850*1*2	Infrared		24 V / 1.3 W	850 nm			
Emitting width: 16 mm	LDL2-41X16RD	Red	41×16 mm	24 V / 1.9 W	635 nm	Diffusion plate Polarization plate Protective panel Bracket	PD3 CC-ST-1024 PSB PTU2	50 g
	LDL2-41X16SW	White			6,600 K			
	LDL2-41X16BL	Blue			470 nm			
	LDL2-41X16GR	Green			525 nm			
	LDL2-41X16RD-WD	Red	41×16 mm	24 V / 1.9 W	635 nm	Diffusion plate Polarization plate Protective panel Bracket	PD3 CC-ST-1024 PSB PTU2	50 g
	LDL2-41X16SW-WD	White			6,600 K			
	LDL2-41X16BL-WD	Blue			470 nm			
	LDL2-41X16GR-WD	Green			525 nm			
	LDL2-80X16RD	Red	80×16 mm	24 V / 3.8 W	635 nm	Diffusion plate Polarization plate Protective panel Bracket	PD3 CC-ST-1024 PSB PTU2	75 g
	LDL2-80X16SW	White			6,600 K			
	LDL2-80X16BL	Blue			470 nm			
	LDL2-80X16GR	Green			525 nm			
LDL2-80X16RD-WD	Red	80×16 mm	24 V / 3.8 W	635 nm	Diffusion plate Polarization plate Protective panel Bracket	PD3 CC-ST-1024 PSB PTU2	75 g	
LDL2-80X16SW-WD	White			6,600 K				
LDL2-80X16BL-WD	Blue			470 nm				
LDL2-80X16GR-WD	Green			525 nm				
Emitting width: 30 mm	LDL2-119X16RD	Red	119×16 mm	24 V / 5.7 W	635 nm	Diffusion plate Polarization plate Protective panel Bracket	PD3 CC-ST-1024 PSB PTU2	95 g
	LDL2-119X16SW	White			6,600 K			
	LDL2-119X16BL	Blue			470 nm			
	LDL2-119X16GR	Green			525 nm			
	LDL2-119X16RD-WD	Red	119×16 mm	24 V / 5.7 W	635 nm	Diffusion plate Polarization plate Protective panel Bracket	PD3 CC-ST-1024 PSB PTU2	95 g
	LDL2-119X16SW-WD	White			6,600 K			
	LDL2-119X16BL-WD	Blue			470 nm			
	LDL2-119X16GR-WD	Green			525 nm			
Emitting width: 30 mm	LDL2-74X30RD	Red	74×30 mm	24 V / 5.7 W	635 nm	Diffusion plate Polarization plate Protective panel Bracket	PD3 CC-ST-1024 PSB PTU2	100 g
	LDL2-74X30SW	White			6,600 K			
	LDL2-74X30BL	Blue			470 nm			
	LDL2-74X30GR	Green	525 nm	74×30 mm	24 V / 5.7 W	Diffusion plate Polarization plate Protective panel Bracket	PD3 CC-ST-1024 PSB PTU2	100 g
	LDL2-74X30RD-WD	Red	635 nm					
	LDL2-74X30SW-WD	White	6,600 K					
	LDL2-74X30BL-WD	Blue	470 nm					
LDL2-74X30GR-WD	Green	525 nm						

*1: All LEDs of the LDL2-33X8 have wide type directional characteristics.

*2: Please inquire if you would like to use in combination with a Strobe Control Unit (overdrive type).

Extension Cables ▶ P.222

Control Unit Selection Guide ▶ P.181

Control Unit Page ▶ P.185

- LDR2
- LDR2-LA
- LDR-LA1
- SQR
- SQR-TP
- HLDR-IP
- HPR2
- HPR
- LFR
- LKR
- FPR
- FPQ2
- LDL2**
- LDLB
- HLDL2
- TH
- LFL
- HPD2
- HPD
- LDM2
- LAV
- PDM
- LFX2
- LFV3
- LFV2
- MSU
- MFU
- UV2
- UV
- LNSP-UV-FN
- IR2
- HLV2
- LV
- LSP
- HFS/HFR
- HLV2-NR
- HLV2-3M-RGB-3W
- PFB2
- PFBR
- LNSP
- CU-LNSP
- LNSP-FN
- LN/LN-HK
- LNSD
- LND2
- HLND
- LT
- LNW/HLDN
- LNIS
- LNIS-FN
- Telecentric Lens
- Macro Lens

* End of the model name: -WD: Wide type

	Model name	LED color	Emitting surface size	Power consumption	Peak wavelength/ correlated color temperature	Options	Recommended Control Units	Weight
Emitting width: 30 mm	LDL2-146X30RD	Red	146×30 mm	24 V / 12 W	635 nm	<input type="checkbox"/> Diffusion plate <input type="checkbox"/> Polarization plate <input type="checkbox"/> Protective panel <input type="checkbox"/> Bracket	<input type="checkbox"/> PD3 <input type="checkbox"/> PSB <input type="checkbox"/> PTU2	170 g
	LDL2-146X30SW	White			6,600 K			
	LDL2-146X30BL	Blue			470 nm			
	LDL2-146X30GR	Green			525 nm			
	LDL2-146X30RD-WD	Red	146×30 mm	24 V / 12 W	635 nm	<input type="checkbox"/> Diffusion plate <input type="checkbox"/> Polarization plate <input type="checkbox"/> Protective panel <input type="checkbox"/> Bracket	<input type="checkbox"/> PD3 <input type="checkbox"/> PSB <input type="checkbox"/> PTU2	170 g
	LDL2-146X30SW-WD	White			6,600 K			
	LDL2-146X30BL-WD	Blue			470 nm			
	LDL2-146X30GR-WD	Green			525 nm			
	LDL2-218X30RD	Red	218×30 mm	24 V / 18 W	635 nm	<input type="checkbox"/> Diffusion plate <input type="checkbox"/> Polarization plate <input type="checkbox"/> Protective panel <input type="checkbox"/> Bracket	<input type="checkbox"/> PD3 <input type="checkbox"/> PSB <input type="checkbox"/> PTU2	240 g
	LDL2-218X30SW	White			6,600 K			
	LDL2-218X30BL	Blue			470 nm			
	LDL2-218X30GR	Green			525 nm			
	LDL2-218X30RD-WD	Red	218×30 mm	24 V / 18 W	635 nm	<input type="checkbox"/> Diffusion plate <input type="checkbox"/> Polarization plate <input type="checkbox"/> Protective panel <input type="checkbox"/> Bracket	<input type="checkbox"/> PD3 <input type="checkbox"/> PSB <input type="checkbox"/> PTU2	240 g
	LDL2-218X30SW-WD	White			6,600 K			
	LDL2-218X30BL-WD	Blue			470 nm			
	LDL2-218X30GR-WD	Green			525 nm			
LDL2-266X30RD	Red	266×30 mm	24 V / 21 W	635 nm	<input type="checkbox"/> Diffusion plate <input type="checkbox"/> Polarization plate <input type="checkbox"/> Protective panel <input type="checkbox"/> Bracket	<input type="checkbox"/> PD3 <input type="checkbox"/> PSB <input type="checkbox"/> PTU2	280 g	
LDL2-266X30SW	White			6,600 K				
LDL2-266X30BL	Blue			470 nm				
LDL2-266X30GR	Green			525 nm				
LDL2-266X30RD-WD	Red	266×30 mm	24 V / 21 W	635 nm	<input type="checkbox"/> Diffusion plate <input type="checkbox"/> Polarization plate <input type="checkbox"/> Protective panel <input type="checkbox"/> Bracket	<input type="checkbox"/> PD3 <input type="checkbox"/> PSB <input type="checkbox"/> PTU2	280 g	
LDL2-266X30SW-WD	White			6,600 K				
LDL2-266X30BL-WD	Blue			470 nm				
LDL2-266X30GR-WD	Green			525 nm				

Extension Cables ► P.222

Control Unit Selection Guide ► P.181

Control Unit Page ► P.185

Direct Lighting

Convergent
Lighting

Diffused Lighting

Direct
Lighting

Diffused Lighting

Collimated
LightingUltraviolet
LightingInfrared
Lighting

Spot Lighting, Etc.

Convergent
LightingDiffused
LightingOblique
Angled
Lighting

Lenses

Lenses

Lenses

► Lineup (Special Orders) * End of the model name: -WD: Wide type

	Model name	LED color	Emitting surface size	Power consumption	Peak wavelength/ correlated color temperature	Options	Recommended Control Units	Weight
Emitting width: 16 mm	LDL2-158X16RD (-WD)	Red	158×16 mm	24 V / 7.6 W	635 nm	Please inquire for more information.	<input type="checkbox"/> PD3 <input type="checkbox"/> CC-ST-1024 <input type="checkbox"/> PSB <input type="checkbox"/> PTU2	120 g
	LDL2-158X16SW (-WD)	White			6,600 K			
	LDL2-158X16BL (-WD)	Blue			470 nm			
	LDL2-158X16GR (-WD)	Green			525 nm			
	LDL2-197X16RD (-WD)	Red	197×16 mm	24 V / 9.5 W	635 nm			
	LDL2-197X16SW (-WD)	White			6,600 K			
	LDL2-197X16BL (-WD)	Blue			470 nm			
	LDL2-197X16GR (-WD)	Green			525 nm			
	LDL2-236X16RD (-WD)	Red	236×16 mm	24 V / 12 W	635 nm		<input type="checkbox"/> PD3 <input type="checkbox"/> PSB <input type="checkbox"/> PTU2	170 g
	LDL2-236X16SW (-WD)	White			6,600 K			
	LDL2-236X16BL (-WD)	Blue			470 nm			
	LDL2-236X16GR (-WD)	Green			525 nm			

Extension Cables ► P.222

Control Unit Selection Guide ► P.181

Control Unit Page ► P.185

Lenses

Lenses

Lenses

LDL2 series

Lineup (Standard Products) * End of the model name: -WD: Wide type

Model name	LED color	Emitting surface size	Power consumption	Peak wavelength/ correlated color temperature	Options	Recommended Control Units	Weight	
Emitting width: 16 mm	LDL2-275X16RD (-WD)	Red	275×16 mm	24 V / 14 W			195 g	
	LDL2-275X16SW (-WD)	White						635 nm
	LDL2-275X16BL (-WD)	Blue						6,600 K
	LDL2-275X16GR (-WD)	Green						470 nm
	LDL2-314X16RD (-WD)	Red	314×16 mm	24 V / 16 W			220 g	
	LDL2-314X16SW (-WD)	White						635 nm
	LDL2-314X16BL (-WD)	Blue						6,600 K
	LDL2-314X16GR (-WD)	Green						470 nm
	LDL2-353X16RD (-WD)	Red	353×16 mm	24 V / 18 W			245 g	
	LDL2-353X16SW (-WD)	White						635 nm
	LDL2-353X16BL (-WD)	Blue						6,600 K
	LDL2-353X16GR (-WD)	Green						470 nm
LDL2-392X16RD (-WD)	Red	392×16 mm	24 V / 19 W			270 g		
LDL2-392X16SW (-WD)	White						635 nm	
LDL2-392X16BL (-WD)	Blue						6,600 K	
LDL2-392X16GR (-WD)	Green						470 nm	
LDL2-431X16RD (-WD)	Red	431×16 mm	24 V / 21 W			295 g		
LDL2-431X16SW (-WD)	White						635 nm	
LDL2-431X16BL (-WD)	Blue						6,600 K	
LDL2-431X16GR (-WD)	Green						470 nm	
LDL2-470X16RD (-WD)	Red	470×16 mm	24 V / 23 W			320 g		
LDL2-470X16SW (-WD)	White						635 nm	
LDL2-470X16BL (-WD)	Blue						6,600 K	
LDL2-470X16GR (-WD)	Green						470 nm	
LDL2-509X16RD (-WD)	Red	509×16 mm	24 V / 25 W			345 g		
LDL2-509X16SW (-WD)	White						635 nm	
LDL2-509X16BL (-WD)	Blue						6,600 K	
LDL2-509X16GR (-WD)	Green						470 nm	
Emitting width: 30 mm	LDL2-26X30RD (-WD)	Red	26×30 mm	24 V / 1.9 W			55 g	
	LDL2-26X30SW (-WD)	White						635 nm
	LDL2-26X30BL (-WD)	Blue						6,600 K
	LDL2-26X30GR (-WD)	Green						
	LDL2-50X30RD (-WD)	Red	50×30 mm	24 V / 3.8 W			80 g	
	LDL2-50X30SW (-WD)	White						635 nm
	LDL2-50X30BL (-WD)	Blue						6,600 K
	LDL2-50X30GR (-WD)	Green						
	LDL2-98X30RD (-WD)	Red	98×30 mm	24 V / 7.6 W			125 g	
	LDL2-98X30SW (-WD)	White						635 nm
	LDL2-98X30BL (-WD)	Blue						6,600 K
	LDL2-98X30GR (-WD)	Green						
	LDL2-122X30RD (-WD)	Red	122×30 mm	24 V / 9.5 W			150 g	
	LDL2-122X30SW (-WD)	White						635 nm
	LDL2-122X30BL (-WD)	Blue						6,600 K
	LDL2-122X30GR (-WD)	Green						
	LDL2-170X30RD (-WD)	Red	170×30 mm	24 V / 14 W			200 g	
	LDL2-170X30SW (-WD)	White						635 nm
LDL2-170X30BL (-WD)	Blue	6,600 K						
LDL2-170X30GR (-WD)	Green	470 nm						

Please inquire for more information.

PD3
PSB PTU2

PD3
PSB PTU2

PD3 CC-ST-1024
PSB PTU2

- Direct Lighting
- Bar Lights
- Direct Lighting
- Diffused Lighting
- Convergent Lighting
- Collimated Lighting
- Ultraviolet Lighting
- Infrared Lighting
- Spot Lighting, Etc.
- Diffused Lighting
- Oblique Angled Lighting
- Lenses
- Telecentric Lens
- Macro Lens

* End of the model name: -WD: Wide type

Model name	LED color	Emitting surface size	Power consumption	Peak wavelength/ correlated color temperature	Options	Recommended Control Units	Weight
LDL2-194X30RD (-WD)	Red	194×30mm	24 V / 16 W	635 nm	Please inquire for more information.	<div style="display: flex; flex-wrap: wrap; gap: 5px;"> <div style="border: 1px solid black; padding: 2px;">PD3</div> <div style="border: 1px solid black; padding: 2px;">PSB</div> <div style="border: 1px solid black; padding: 2px;">PTU2</div> </div>	225 g
LDL2-194X30SW (-WD)	White			6,600 K			
LDL2-194X30BL (-WD)	Blue			470 nm			
LDL2-194X30GR (-WD)	Green			525 nm			
LDL2-242X30RD (-WD)	Red	242×30mm	24 V / 19 W	635 nm			
LDL2-242X30SW (-WD)	White			6,600 K			
LDL2-242X30BL (-WD)	Blue			470 nm			
LDL2-242X30GR (-WD)	Green			525 nm			
LDL2-290X30RD (-WD)	Red	290×30mm	24 V / 23 W	635 nm			
LDL2-290X30SW (-WD)	White			6,600 K			
LDL2-290X30BL (-WD)	Blue			470 nm			
LDL2-290X30GR (-WD)	Green			525 nm			
LDL2-314X30RD (-WD)	Red	314×30mm	24 V / 25 W	635 nm			
LDL2-314X30SW (-WD)	White			6,600 K			
LDL2-314X30BL (-WD)	Blue			470 nm			
LDL2-314X30GR (-WD)	Green			525 nm			
LDL2-338X30RD (-WD)	Red	338×30mm	24 V / 27 W	635 nm			
LDL2-338X30SW (-WD)	White			6,600 K			
LDL2-338X30BL (-WD)	Blue			470 nm			
LDL2-338X30GR (-WD)	Green			525 nm			
LDL2-362X30RD (-WD)	Red	362×30mm	24 V / 29 W	635 nm			
LDL2-362X30SW (-WD)	White			6,600 K			
LDL2-362X30BL (-WD)	Blue			470 nm			
LDL2-362X30GR (-WD)	Green			525 nm			
LDL2-386X30RD (-WD)	Red	386×30mm	24 V / 31 W	635 nm			
LDL2-386X30SW (-WD)	White			6,600 K			
LDL2-386X30BL (-WD)	Blue			470 nm			
LDL2-386X30GR (-WD)	Green			525 nm			
LDL2-410X30RD (-WD)	Red	410×30mm	24 V / 33 W	635 nm			
LDL2-410X30SW (-WD)	White			6,600 K			
LDL2-410X30BL (-WD)	Blue			470 nm			
LDL2-410X30GR (-WD)	Green			525 nm			
LDL2-434X30RD (-WD)	Red	434×30mm	24 V / 35 W	635 nm			
LDL2-434X30SW (-WD)	White			6,600 K			
LDL2-434X30BL (-WD)	Blue			470 nm			
LDL2-434X30GR (-WD)	Green			525 nm			
LDL2-458X30RD (-WD)	Red	458×30mm	24 V / 37 W	635 nm			
LDL2-458X30SW (-WD)	White			6,600 K			
LDL2-458X30BL (-WD)	Blue			470 nm			
LDL2-458X30GR (-WD)	Green			525 nm			
LDL2-482X30RD (-WD)	Red	482×30mm	24 V / 38 W	635 nm			
LDL2-482X30SW (-WD)	White			6,600 K			
LDL2-482X30BL (-WD)	Blue			470 nm			
LDL2-482X30GR (-WD)	Green			525 nm			
LDL2-506X30RD (-WD)	Red	506×30mm	24 V / 40 W	635 nm			
LDL2-506X30SW (-WD)	White			6,600 K			
LDL2-506X30BL (-WD)	Blue			470 nm			
LDL2-506X30GR (-WD)	Green			525 nm			

Emitting width: 30 mm

Extension Cables ▶ P.222

Control Unit Selection Guide ▶ P.181

Control Unit Page ▶ P.185

Direct Lighting

Convergent Lighting

Diffused Lighting

Direct Lighting

Collimated Lighting

Ultraviolet Lighting

Infrared Lighting

Spot Lighting, Etc.

Convergent Lighting

Diffused Lighting

Oblique Angled Lighting

Lenses

Lenses

Lenses

Lenses

Lenses

Lenses

Lenses

Lenses

Lenses

Lenses

Lenses

LDR2

LDR2-LA

LDR-LA1

SQR

SQR-TP

HLDR-IP

HPR2

HPR

LFR

LKR

FPR

FPQ2

LDL2

LDLB

HLDL2

TH

LFL

HPD2

HPD

LDM2

LAV

PDM

LFX2

LFV3

LFV2

MSU

MFU

UV2

UV

LNSP-UV-FN

IR2

HLV2

LV

LSP

HFS/HFR

HLV2-NR

HLV2-3M-RGB-3W

PFB2

PFBR

LNSP

CU-LNSP

LNSP-FN

LN/LN-HK

LNSD

LND2

HLND

LT

LNV/HLDN

LNIS

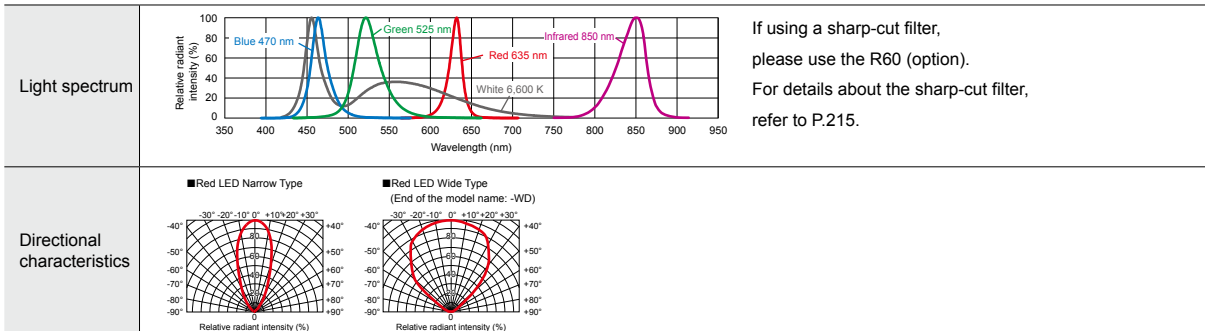
LNIS-FN

Telecentric Lens

Macro Lens

LDL2 series

LED properties



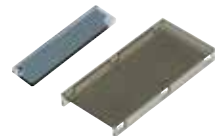
If using a sharp-cut filter, please use the R60 (option). For details about the sharp-cut filter, refer to P.215.

Be sure to read the "Instruction Guide" included with the product before use and observe cautionary information. The data included is for reference only and does not guarantee the quality of this product.

Options



Can prevent glare, which is a problem when making images of glossy workpieces.



Use with a polarization filter to remove the light's surface reflection.



Protects the emitting part of the Light Unit.

* Not intended to protect against dust or water.

Diffusion plate

Model name	Applicable Light Unit (Common for all colors)
DF-LDL2-33X8	LDL2-33X8
DF-LDL2-41X16	LDL2-41X16/LDL2-41X16-WD
DF-LDL2-80X16	LDL2-80X16/LDL2-80X16-WD
DF-LDL2-119X16	LDL2-119X16/LDL2-119X16-WD
DF-LDL2-74X30	LDL2-74X30/LDL2-74X30-WD
DF-LDL2-146X30	LDL2-146X30/LDL2-146X30-WD
DF-LDL2-218X30	LDL2-218X30/LDL2-218X30-WD
DF-LDL2-266X30	LDL2-266X30/LDL2-266X30-WD

▶ P.216

Polarization plate

Model name	Applicable Light Unit (Common for all colors)
PL-LDL2-33X8-HO	LDL2-33X8
PL-LDL2-33X8-VE	LDL2-33X8
PL-LDL2-41X16	LDL2-41X16/LDL2-41X16-WD
PL-LDL2-41X16-VE	LDL2-41X16/LDL2-41X16-WD
PL-LDL2-80X16	LDL2-80X16/LDL2-80X16-WD
PL-LDL2-80X16-VE	LDL2-80X16/LDL2-80X16-WD
PL-LDL2-119X16	LDL2-119X16/LDL2-119X16-WD
PL-LDL2-119X16-VE	LDL2-119X16/LDL2-119X16-WD
PL-LDL2-74X30	LDL2-74X30/LDL2-74X30-WD
PL-LDL2-74X30-VE	LDL2-74X30/LDL2-74X30-WD
PL-LDL2-146X30	LDL2-146X30/LDL2-146X30-WD
PL-LDL2-146X30-VE	LDL2-146X30/LDL2-146X30-WD
PL-LDL2-218X30	LDL2-218X30/LDL2-218X30-WD
PL-LDL2-218X30-VE	LDL2-218X30/LDL2-218X30-WD
PL-LDL2-266X30	LDL2-266X30/LDL2-266X30-WD
PL-LDL2-266X30-VE	LDL2-266X30/LDL2-266X30-WD

▶ P.217

* There are two kinds of polarization plates: the HO and the VE. For details, refer to P. 183.

Protective panel

Model name	Applicable Light Unit (Common for all colors)
CV-LDL2-41X16	LDL2-41X16/LDL2-41X16-WD
CV-LDL2-80X16	LDL2-80X16/LDL2-80X16-WD
CV-LDL2-119X16	LDL2-119X16/LDL2-119X16-WD
CV-LDL2-74X30	LDL2-74X30/LDL2-74X30-WD
CV-LDL2-146X30	LDL2-146X30/LDL2-146X30-WD
CV-LDL2-218X30	LDL2-218X30/LDL2-218X30-WD
CV-LDL2-266X30	LDL2-266X30/LDL2-266X30-WD

▶ P.221



You can freely adjust the illuminating angle when affixing the Light Unit. Various kinds of illumination are possible depending on the affixing method, such as illumination from two or four directions.

Bracket

Model name	Note
BK-LDL2	Angle adjustment bracket common for the LDL2 series (x2)

▶ P.219



You can freely adjust the illuminating angle when affixing the Light Unit. Various kinds of illumination are possible depending on the affixing method, such as illumination from two or four directions.

Bracket

Model name	Note
BK-LDQ2-33X8	Bracket that can install four of the LDL2-33X8

▶ P.219



You can freely adjust the illuminating angle when affixing the Light Unit. Various kinds of illumination are possible depending on the affixing method, such as illumination from two or four directions.

Bracket

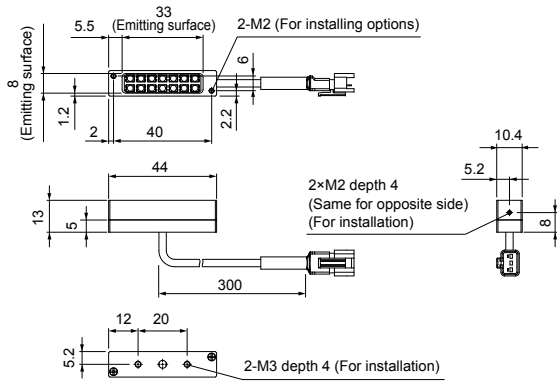
Model name	Note
BK-LDQ2-41X16	Bracket that can install four of the LDL2-41X16
BK-LDQ2-80X16	Bracket that can install four of the LDL2-80X16
BK-LDQ2-119X16	Bracket that can install four of the LDL2-119X16
BK-LDQ2-74X30	Bracket that can install four of the LDL2-74X30
BK-LDQ2-146X30	Bracket that can install four of the LDL2-146X30
BK-LDQ2-218X30	Bracket that can install four of the LDL2-218X30
BK-LDQ2-266X30	Bracket that can install four of the LDL2-266X30

▶ P.219

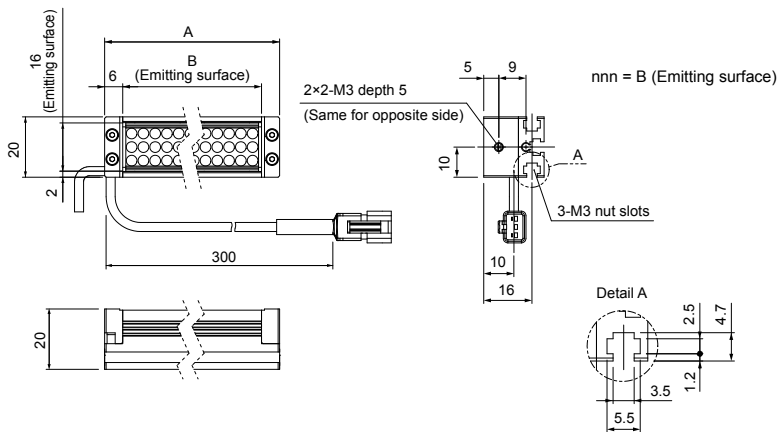
LDR2	Direct Lighting	
LDR2-LA		
LDR-LA1		
SQR		
SQR-TP	Convergent Lighting	
HLDL2-IP		
HPR2	Diffused Lighting	
HPR		
LFR		
LKR		
FPR		
FPQ2	Direct Lighting	
LDL2		
LDLB		
HLDL2		
TH		Diffused Lighting
LFL		
HPD2		
HPD		
LDM2		
LAV		
PDM		
LFX2		
LFV3		
LFV2		
MSU	Collimated Lighting	
MFU		
UV2	Ultraviolet Lighting	
UV		
LNSP-UV-FN	Infrared Lighting	
IR2		
HLV2	Spot Lighting, Etc.	
LV		
LSP		
HFS/HFR		
HLV2-NR		
HLV2-3M-RGB-3W	Convergent Lighting	
PFB2		
PFBR		
LNSP	Diffused Lighting	
CU-LNSP		
LNSP-FN	Oblique Angled Lighting	
LN/LN-HK		
LNSD	Lenses	
LND2		
HLND		
LT		
LNW/HLDN		
LNIS		
LNIS-FN		
Telecentric Lens		
Macro Lens		

▶ Dimensions (mm)

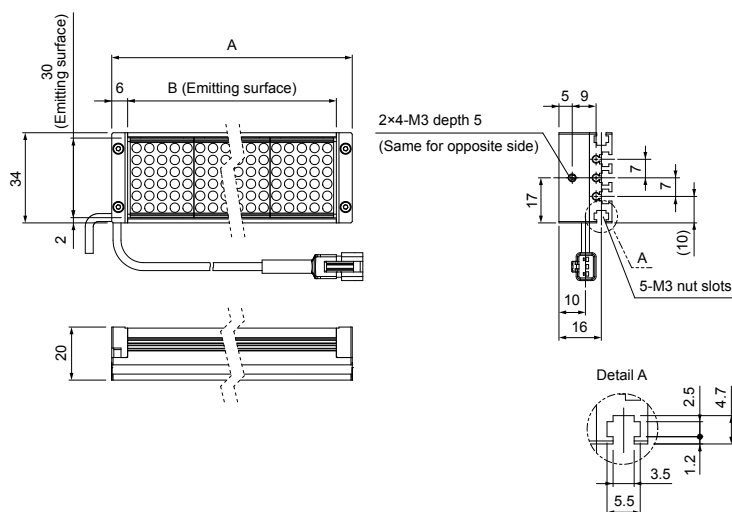
For the LDL2-33X8RD/SW/BL/GR/IR850



For the LDL2-*nnn*X16RD/SW/BL/GR



For the LDL2-*nnn*X30RD/SW/BL/GR



Standard product

Model name	A	B
LDL2-41X16RD/SW/BL/GR	53	41
LDL2-80X16RD/SW/BL/GR	92	80
LDL2-119X16RD/SW/BL/GR	131	119

Special order

Model name	A	B
LDL2-158X16RD/SW/BL/GR	170	158
LDL2-197X16RD/SW/BL/GR	209	197
LDL2-236X16RD/SW/BL/GR	248	236
LDL2-275X16RD/SW/BL/GR	287	275
LDL2-314X16RD/SW/BL/GR	326	314
LDL2-353X16RD/SW/BL/GR	365	353
LDL2-392X16RD/SW/BL/GR	404	392
LDL2-431X16RD/SW/BL/GR	443	431
LDL2-470X16RD/SW/BL/GR	482	470
LDL2-509X16RD/SW/BL/GR	521	509

The Wide Type (-WD) is the same size.

Standard product

Model name	A	B
LDL2-74X30RD/SW/BL/GR	86	74
LDL2-146X30RD/SW/BL/GR	158	146
LDL2-218X30RD/SW/BL/GR	230	218
LDL2-266X30RD/SW/BL/GR	278	266

Special order

Model name	A	B
LDL2-26X30RD/SW/BL/GR	38	26
LDL2-50X30RD/SW/BL/GR	62	50
LDL2-98X30RD/SW/BL/GR	110	98
LDL2-122X30RD/SW/BL/GR	134	122
LDL2-170X30RD/SW/BL/GR	182	170
LDL2-194X30RD/SW/BL/GR	206	194
LDL2-242X30RD/SW/BL/GR	254	242
LDL2-290X30RD/SW/BL/GR	302	290
LDL2-314X30RD/SW/BL/GR	326	314
LDL2-338X30RD/SW/BL/GR	350	338
LDL2-362X30RD/SW/BL/GR	374	362
LDL2-386X30RD/SW/BL/GR	398	386
LDL2-410X30RD/SW/BL/GR	422	410
LDL2-434X30RD/SW/BL/GR	446	434
LDL2-458X30RD/SW/BL/GR	470	458
LDL2-482X30RD/SW/BL/GR	494	482
LDL2-506X30RD/SW/BL/GR	518	506

The Wide Type (-WD) is the same size.

You can change the connectors of the Light Unit cable. Choose between M12 connectors and flying leads. Refer to P.125 for details.

Direct Lighting

Convergent Lighting

Diffused Lighting

Direct Lighting

Diffused Lighting

Direct Lighting

Diffused Lighting

Direct Lighting

Diffused Lighting

Direct Lighting

Diffused Lighting

Direct Lighting

Diffused Lighting

Direct Lighting

Calculated Lighting

Ultraviolet Lighting

Infrared Lighting

Spot Lighting, Etc.

Convergent Lighting

Diffused Lighting

Oblique Angled Lighting

Lenses

Lenses

Lenses

Lenses

Lenses

Lenses

Lenses

Lenses

Lenses

Lenses