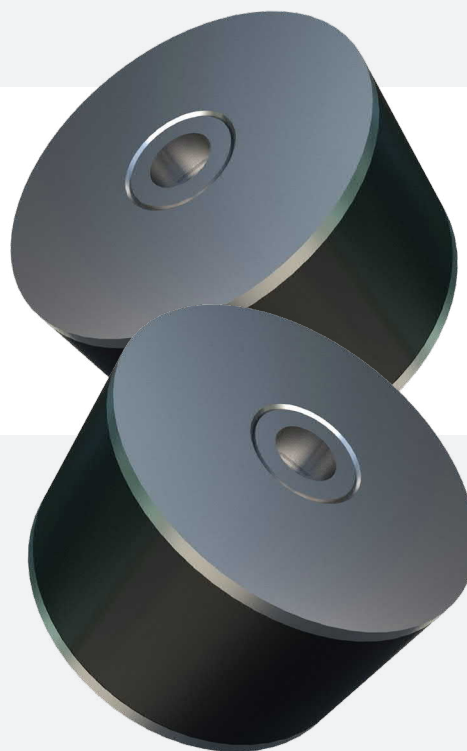


## Bobbin – Type C

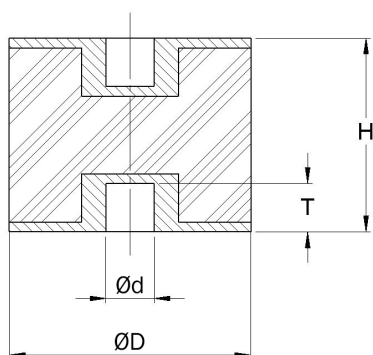
Bobbin mounts can be used in a wide variety of applications to permit relative movement of the suspended mass and isolation from the effects of noise, vibration and shock. The bobbin mounts are designed to have a higher compressive stiffness and a lower shear stiffness.

### Typical applications include:

- Light fans
- Engines and pumps
- Compressors
- Measuring and test equipment



### TECHNICAL DRAWING



Figures stated are for natural rubber hardness 60° IRH. Other hardness are available upon request. The technical values are to be used for info only. If you have any questions, please contact TAVS. Other dimensions on special demand with minimum quantity and/or order value.

### PRODUCT DATA

TYPE	DRAWING NO.	PART NO.	DIMENSIONS (mm)				COMPRESSION		SHEAR		MAX. BOLT TORQUE (Nm)
			ØD	H	Ød	T	MAX. LOAD (kg)	MAX. DEFLECTION (mm)	MAX. LOAD (kg)	MAX. DEFLECTION (mm)	
<b>TYPE C</b>											
C10/10	19-0324	20-00095	10	10	M4	4	10	1.6	1	1.2	1.6
C10/15	C1015	54001138	10	15	M4	4	1.5	1.1	1.2	3.9	1.3
C10/15	C1015	54001139	10	15	M4	4	2.9	1.2	2.2	3.6	1.3
C15/15	19-0325	20-00583	15	15	M4	4	12	1.5	4	2	1.6
C15/20	C1520	54001169	15	20	M4	4	3.4	1.7	2.6	5.1	1.3
C15/20	C1520	54001170	15	20	M4	4	6.5	1.7	5	4.9	1.3
C16/15	C 1615	509219	16	15	M5	3	5.7	0.8	3.3	2.9	2.7
C16/20	C 1620	509220	16	20	M5	3	5.1	1.1	3.3	3.6	2.7
C16/25	C 1625	509221	16	25	M5	3	4.8	1.5	5.1	1.8	2.7
C20/15	C 2015	509222	20	15	M6	4	10.2	0.7	5.1	3.3	4.7
C20/20	C 2020	509223	20	20	M6	4	8.6	1.1	5.1	4.2	4.7
C20/20	19-0551	20-01289	20	20	M6	4/6	17	1.6	5	2.5	8.3
C20/25	C 2025	509224	20	25	M6	4	7.9	1.4	5.1	5.0	4.7
C20/25	19-0552	20-00584	20	25	M6	6	15	2.2	4	2.7	8.3
C20/30	C 2030	509225	20	30	M6	5	7.6	1.7	5.1	6.3	4.7
C20/30	19-0553	20-00363	20	30	M6	6	12	2.5	4	3	8.3
C25/20	C 2520	509226	25	20	M8	6	14.8	1.1	8	3.0	11
C25/20	19-0327	20-01291	25	20	M6	6	29	1.7	9	3	8.3
C25/22	C 2522	509227	25	22	M8	6	14.1	1.2	8	3.4	11
C25/25	C 2525	509228	25	25	M8	6	13.3	1.4	8	4.4	11
C25/25	19-0424	20-01292	25	25	M6	6	27	2.2	8	3.5	8.3
C25/30	C 2530	509229	25	30	M8	6	12.4	1.7	8	6.0	11

# Bobbin – Type C

## PRODUCT DATA

TYPE	DRAWING NO.	PART NO.	DIMENSIONS (mm)				COMPRESSION		SHEAR		MAX. BOLT TORQUE (Nm)
			ØD	H	Ød	T	MAX. LOAD (kg)	MAX. DEFLECTION (mm)	MAX. LOAD (kg)	MAX. DEFLECTION (mm)	
C25/40	C 2540	509230	25	40	M8	6	11.5	2.4	11.5	1.8	11
C30/22	C 3022	509231	30	22	M8	6	21.9	1.2	11.5	4.3	11
C30/25	19-0328	20-00475	30	25	M8	8	38	2.2	12	3.6	20
C30/30	C 3030	509232	30	30	M8	6	18.9	1.7	11.5	5.9	11
C30/30	19-0427	20-01455	30	30	M8	10	36	2.6	11	4.1	20
C30/40	C 3040	509233	30	40	M8	6	17.3	2.4	20.4	2.6	11
C30/40	19-0812	20-00476	30	40	M8	8	44	3.6	21	10.9	20
C40/28	C 4028	509234	40	28	M10	8	39	1.6	20.4	5.9	23
C40/30	C 4030	509235	40	30	M10	8	38	1.7	20.4	5.9	23
C40/30	19-0329	20-00551	40	30	M8	8	71	2.7	25	5.2	20
C40/35	C 4035	509236	40	35	M10	8	35	2.0	20.4	6.7	23
C40/40	C 4040	509237	40	40	M10	8	33	2.4	20.4	4.4	23
C40/40	19-0423	20-00587	40	40	M8	8	66	3.9	25	7.4	20
C40/45	C 4045	509238	40	45	M10	8	32	2.7	32	2.5	23
C50/30	19-0330	20-01456	50	30	M10	10	122	2.4	41	5.2	40
C50/30	C 5030	509239	50	30	M10	8	67	1.6	32	5.0	23
C50/35	C 5035	509240	50	35	M10	8	61	2.0	32	5.8	23
C50/40	C 5040	509241	50	40	M10	8	57	2.3	32	6.5	23
C50/40	19-0436	20-01457	50	40	M10	10	112	3.3	41	7.4	40
C50/45	C 5045	509242	50	45	M10	8	54	2.6	32	7.3	23
C50/45	19-0438	20-01025	50	45	M10	10	107	4.1	41	8.6	40
C50/50	C 5050	509243	50	50	M10	8	52	3.0	46	3.6	23
C50/50	19-0440	20-01313	50	50	M10	10	107	4.9	41	9.7	40
C60/36	C 6036	509244	60	36	M10	8	95	2.0	46	6.5	23
C60/45	C 6045	509245	60	45	M10	8	84	2.6	63	4.8	23
C70/35	C 7035	509246	70	35	M10	9	148	1.9	63	7.3	23
C70/50	C 7050	509247	70	50	M10	9	117	2.9	63	10.7	23
C70/70	C 7070	509248	70	70	M10	9	101	4.2	72	3.2	23
C75/40	C 7540	509249	75	40	M12	9	160	2.2	72	7.3	39
C75/40	19-0447	20-01318	75	40	M12	12	296	3.2	92	7	70
C75/45	19-0448	20-01541	75	45	M12	12	280	3.5	92	8	70
C75/50	C 7550	509261	75	50	M12	9	139	2.9	72	8.0	39
C75/50	19-0450	20-01320	75	50	M12	12	265	4.1	92	9	70
C75/55	C 7555	509262	75	55	M12	9	159	3.9	86	9.7	39
C75/55	19-0451	20-00125	75	55	M12	12	245	4.6	92	10.1	70
C80/40	C 8040	509263	80	40	M14	12	190	2.3	82	10.6	62
C80/70	C 8070	509265	80	70	M14	12	162	5.3	97	13.0	62
C80/80	C 8080	509266	80	80	M14	12	165	6.1	97	14.4	62
C100/40	C 10040	509267	100	40	M16	14	334	2.4	128	8.0	95
C100/40	19-0332	20-01324	100	40	M16	16	663	2.9	153	5.6	170
C100/55	C 10055	509268	100	55	M16	14	323	3.8	152	9.6	95
C100/55	19-0446	20-01325	100	55	M16	16	520	4.9	153	9.1	170
C100/60	C 10060	509269	100	60	M16	14	306	4.2	152	10.6	95
C100/75	C 10075	509271	100	75	M16	14	273	5.4	152	13.6	95
C100/80	C 10080	509272	100	80	M16	14	265	5.8	152	14.5	95
C100/100	C 100100	509273	100	100	M16	14	244	7.4	152	18.4	95

# Bobbin – Type C

## PRODUCT DATA

TYPE	DRAWING NO.	PART NO.	DIMENSIONS (mm)				COMPRESSION		SHEAR		MAX. BOLT TORQUE (Nm)
			ØD	H	Ød	T	MAX. LOAD (kg)	MAX. DEFLECTION (mm)	MAX. LOAD (kg)	MAX. DEFLECTION (mm)	
<b>TYPE C CONTOURED</b>											
C15/15	052 18 060	90767	15	15	M4	4	12	1.0	35	49.1	1.3
C15/15	052 18 060	90617	15	15	M4	4	24	1.0	8	4.9	1.3
C20/20	052 18 053	97163	20	20	M6	5.8	18	1.0	8	3.9	4.7
C20/20	052 18 053	97162	20	20	M6	5.8	35	1.0	20	3.9	4.7
C20/25	052 18 097	91741	20	25	M6	5.8	7	2.3	7	8.6	4.7
C20/25	052 18 097	91063	20	25	M6	5.8	16	2.2	17	8.8	4.7
C25/20	052 18 088	90648	25	20	M6	5.8	24	1.8	18	8.8	4.7
C30/25	052 18 165	91028	30	25	M8	7.4	60	0.9	34	3.5	11
C30/30	052 18 069	91161	30	30	M8	7.4	35	2.3	14	6.9	11
C30/30	052 18 069	91062	30	30	M8	7.4	70	2.1	35	6.9	11
C40/30	052 18 021	91273	40	30	M8	7.9	70	1.5	40	4.9	11
C40/30	052 18 002	90565	40	30	M10	10	142	1.2	67	5.1	23
C40/30	052 18 002	91112	40	30	M10	10	210	1.2	88	4.8	23
C40/40	052 18 043	92282	40	40	M8	7.9	37	3.3	20	9.8	11
C40/40	052 18 043	90596	40	40	M8	7.9	90	3.4	55	10.8	11
C50/30	052 18 091	92163	50	30	M10	10	70	3.0	50	9.8	23
C50/30	052 18 091	91074	50	30	M10	10	130	2.7	80	9.8	23
C50/40	052 18 074	91110	50	40	M10	10	75	3.1	50	9.8	23
C50/40	052 18 074	91236	50	40	M10	10	144	3.1	90	9.8	23
C50/40	052 18 074	91197	50	40	M10	10	211	3.0	130	9.8	23
C50/45	052 18 176	91402	50	45	M10	10	55	4.9	500	163.5	23
C50/50	052 18 112	91412	50	50	M10	10	50	5.5	38	18.6	23
C50/50	052 18 112	91037	50	50	M10	10	100	4.5	95	18.6	23
C60/45	052 18 275	93159	60	45	M10	10	160	4.4	130	18.2	23
C70/45	052 18 207	90772	70	45	M10	10.5	240	4.4	150	14.7	23
C70/60	052 18 077	90640	70	60	M12	10.5	250	5.5	150	18.4	39
C75/40	052 18 198	97233	75	40	M12	10.5	180	4.0	100	14.0	39
C75/40	052 18 198	97230	75	40	M12	10.5	300	3.6	180	13.6	39
C75/40	052 18 198	97229	75	40	M12	10.5	600	4.0	380	13.8	39
C75/40	052 18 198	97234	75	40	M12	10.5	700	3.5	460	13.7	39
C75/50	052 18 082	90643	75	50	M12	10.5	290	4.3	120	11.8	39
C75/50	052 18 082	91460	75	50	M12	10.5	490	4.4	200	11.5	39
C75/55	052 18 212	91045	75	55	M12	10.5	240	5.2	210	20.6	39
C75/55	052 18 212	92517	75	55	M12	10.5	400	5.4	320	20.9	39
C75/70	052 18 115	90667	75	70	M12	10.5	200	6.3	210	25.8	39
C100/55	052 18 102	91611	100	55	M16	15.8	300	5.5	200	19.6	95
C100/55	052 18 102	90975	100	55	M16	15.8	500	5.3	360	19.6	95
C100/55	052 18 102	91522	100	55	M16	15.8	900	5.3	560	19.6	95
C100/75	052 18 049	90602	100	75	M16	15.8	270	6.3	160	19.6	95
C100/75	052 18 049	90603	100	75	M16	15.8	410	6.4	225	20.1	95
C160/75	052 18 146	90684	160	75	M16	15.8	900	7.8	500	27.3	95
C160/75	052 18 146	91431	160	75	M16	15.8	1500	7.8	870	27.5	95
C200/70	052 18 162	90618	200	70	M16	15.8	3600	6.9	1550	24.5	95
C200/70	052 18 162	92531	200	70	M16	15.8	1800	6.8	800	24.5	95