

## 2" VALVES



# INTEGRATED FOR Ø 8 " TANK

## AE1450I08 With Pilot Group

High performance valve integrated in the tank



### PRODUCT CERTIFICATIONS

STANDARD



OPZIONALI



### VALVE TECHNICAL FEATURES

| Features                   | Values                |
|----------------------------|-----------------------|
| Out                        | Pipe 2"               |
| Working Pressure           | 1,5-8 bar             |
| Standard Temperature Range | -40 °C ; +100 °C      |
| High Range Temperature     | -20 °C ; +200 °C      |
| Kv                         | 120 m <sup>3</sup> /h |
| Weight                     | 4,6-5 kg              |
| Protection Level           | IP65                  |

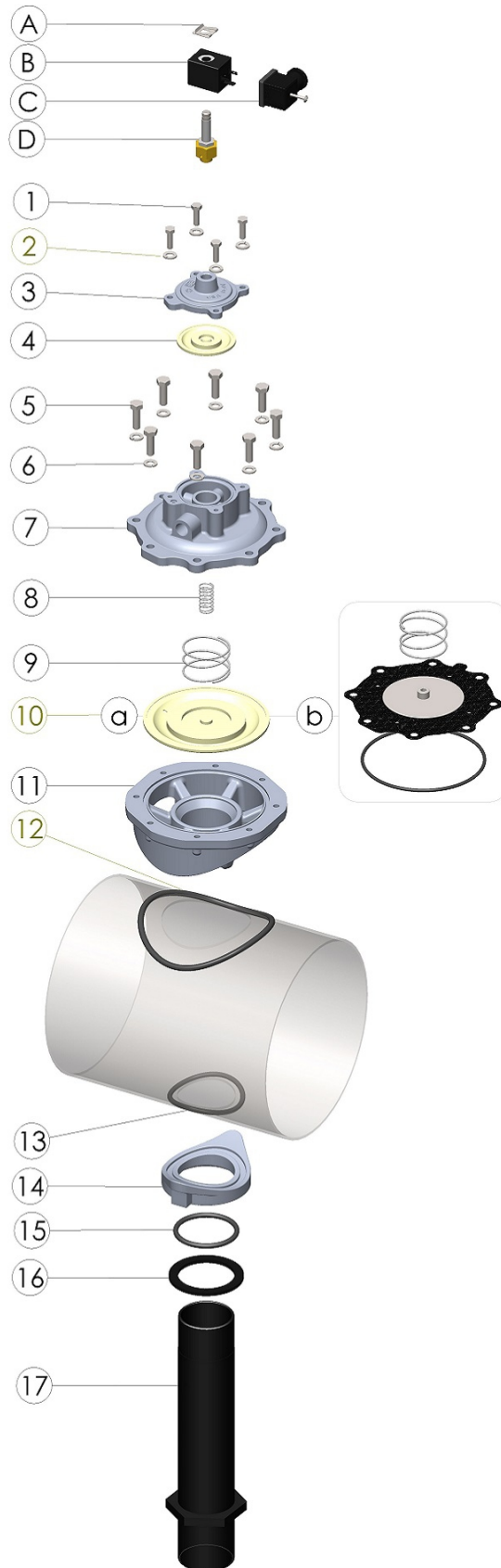
**VALVE TECHNICAL FEATURES**

| Features                          |                                                                | Values |
|-----------------------------------|----------------------------------------------------------------|--------|
| Air quality classes ( ISO 8573-1) | For Solid                                                      | 2      |
|                                   | For Water with $T > +3^{\circ}\text{C}$                        | 4      |
|                                   | For Water with $-20^{\circ}\text{C} < T < +3^{\circ}\text{C}$  | 3      |
|                                   | For Water with $-40^{\circ}\text{C} < T < -20^{\circ}\text{C}$ | 2      |
|                                   | For Oil                                                        | 1      |

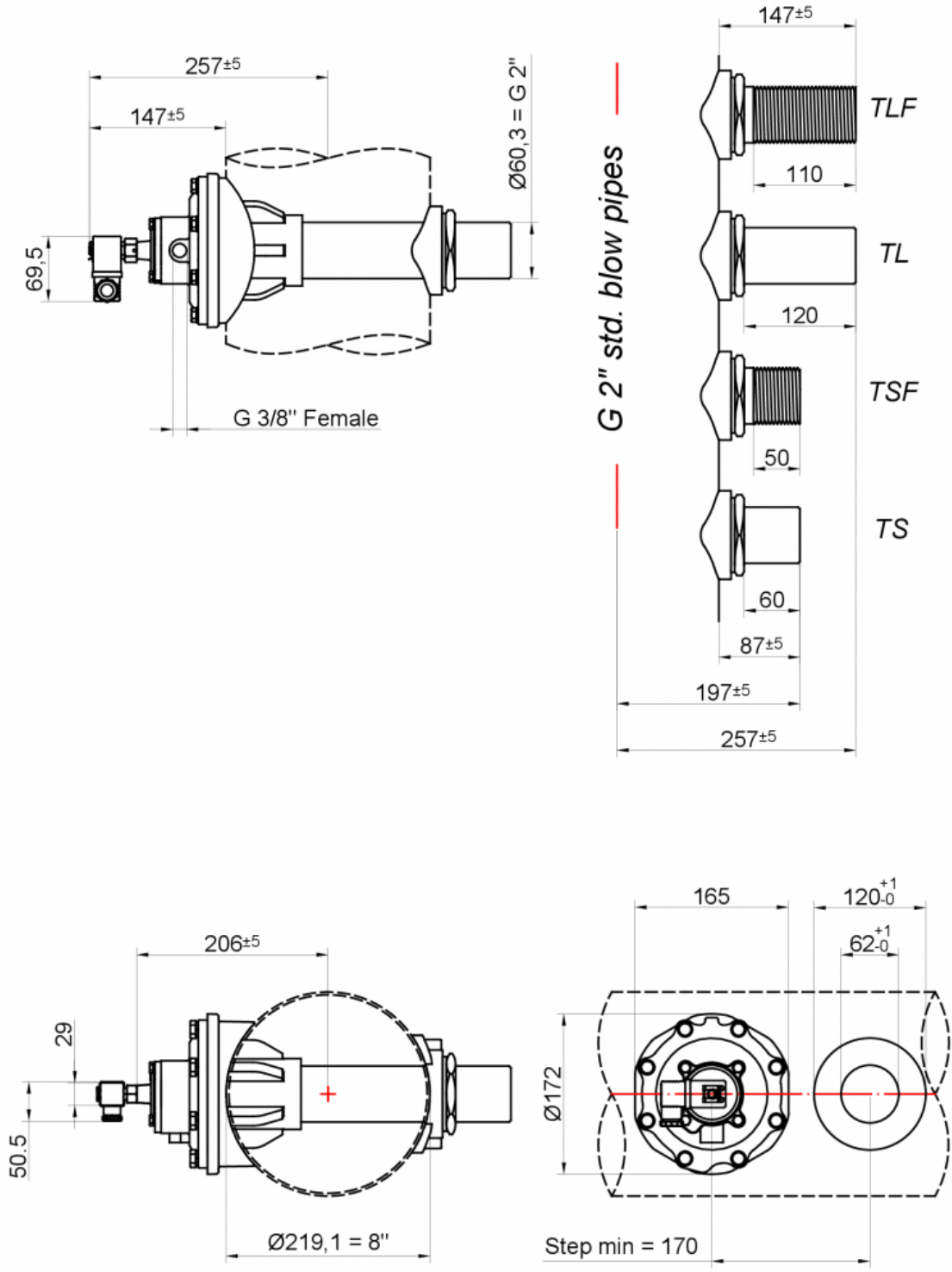
PARTS LIST

| No. | Description         | Material      |
|-----|---------------------|---------------|
| A   | Clip                | CS Galvanized |
| B   | Coil                | PA            |
| C   | Connector           | PA + NBR      |
| D   | Pilot               | SS + Brass    |
| 1   | Screw M6            | SS            |
| 2   | Washer              | SS            |
| 3   | Cover 3/4"          | Die Cast Alu  |
| 4   | Diaphragm 3/4"      | TPE           |
| 5   | Screw M8            | SS            |
| 6   | Washer              | SS            |
| 7   | Cover 2"            | Die Cast Alu  |
| 8   | Spring              | SS            |
| 9   | Spring              | SS            |
| 11  | Body 2" Integrated  | Die Cast Alu  |
| 12  | Body Tank O'Ring    | NBR           |
| 13  | Clamp Tank O'Ring   | NBR           |
| 14  | Clamp 2"            | Die Cast Alu  |
| 15  | Pipe Clamp O'Ring   | NBR           |
| 16  | Washer 2"           | Pa 6,6+ Ela   |
| 10a | STD Diaphragm 2"    | TPE           |
| 10b | HT Diaphragm 2" Kit | NBR+PTFE      |
| 17  | Blow Pipe 2"        | Blow Pipe 2"  |

Imagine



DIMENSIONAL LAYOUT



CONSUMPTION GRAPHS

