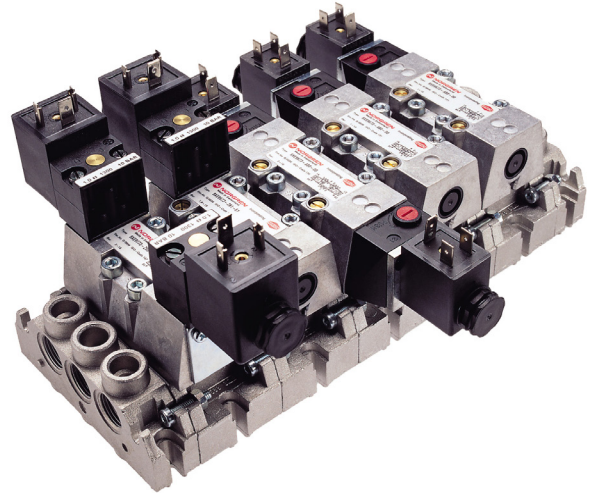


ISO Star Series Valves 5/2 and 5/3 ISO 5599/1 solenoid and air pilot actuated valves

- NITUFF® coated non-corrosive spool and sleeve for long trouble free life (100 million plus cycles)
- Integral flow controls for cylinder speed control on size #1, and #2 models
- Low power solenoids with manual override options
- End and CNOMO solenoid pilots
- Base mounted soft start valves available
- Minimal maintenance



Technical data

Medium:

Compressed air, 40µm filtered, lubricated or non-lubricated

Operation:

Glandless spool valve, solenoid pilot or air pilot actuated

Mounting:

On sub-bases

Sizes:

#1, #2, #3

Meets ISO 5599/1

Operating Pressure:

Maximum pressure
145 psig (10 bar) solenoid pilot actuated valves with internal pilot supply
232 psig (16 bar) solenoid pilot actuated valves with external pilot supply
232 psig (16 bar) air pilot actuated valves

Flow Characteristics

(unregulated):

Size	Cv	l/min
#1	1.2	5.5
#2	2.4	10.7
#3	4.4	17.9

Ambient Temperature:

5°F* to 122°F (-15°C to 50°C) solenoid pilot actuated valves
5°F* to 176°F (-15°C to 80°C) air pilot actuated valves

*Consult our Technical Service for use below 36°F (2°C)

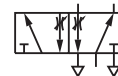
Materials:

Die cast aluminum body. Hard anodized, PTFE coated, matched aluminum spool and sleeve. FPM and nitrile rubber seals. Zinc die cast locking plate. POM plastic parts. Zinc plated screws. Brass flow regulators.

Ordering Information

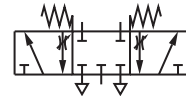
To order select model number, add voltage code and connector code, e.g. SXE 0573-A60-00/13JB for a 5/2 double end solenoid pilot size #1 valve with internal pilot air supply, integral flow regulators, shrouded push button lockable manual override, 22 mm coil 24 VDC with cable grip connector.

5/2



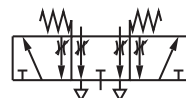
5/3

All ports blocked mid position



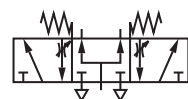
5/3

Center open exhaust mid position



5/3

Center open pressure mid position



5/2 Solenoid Pilot Actuated Valves

	Model	Size	Flow Control	Pilot Supply	Operator	Return	Operating Pressure psig (bar)	Pilot Pressure psig (bar)	Weight lb. (kg)
	SXE9573-A70-00-****	#1	-	Internal	Solenoid	Air Spring	14.5 - 145 (1 - 10)	-	0.74 (0.33)
	SXE9574-A70-00-****	#2	-	Internal	Solenoid	Air Spring	14.5 - 145 (1 - 10)	-	1.34 (0.59)
	SXE9575-A70-00-****	#3	-	Internal	Solenoid	Air Spring	14.5 - 145 (1 - 10)	-	1.93 (0.85)
	SXE9573-A80-00-****	#1	Integral	Internal	Solenoid	Air Spring	14.5 - 145 (1 - 10)	-	0.74 (0.33)
	SXE9574-A80-00-****	#2	Integral	Internal	Solenoid	Air Spring	14.5 - 145 (1 - 10)	-	1.34 (0.59)
	SXE9573-A75-00-****	#1	-	External	Solenoid	Air Spring	26" Hg - 232 (-0.9 - 16)	14.5 - 145 (1 - 10)	0.74 (0.33)
	SXE9574-A75-00-****	#2	-	External	Solenoid	Air Spring	26" Hg - 232 (-0.9 - 16)	14.5 - 145 (1 - 10)	1.34 (0.59)
	SXE9575-A75-00-****	#3	-	External	Solenoid	Air Spring	26" Hg - 232 (-0.9 - 16)	14.5 - 145 (1 - 10)	1.93 (0.85)
	SXE9573-A85-00-****	#1	Integral	External	Solenoid	Air Spring	26" Hg - 232 (-0.9 - 16)	14.5 - 145 (1 - 10)	0.74 (0.33)
	SXE9574-A85-00-****	#2	Integral	External	Solenoid	Air Spring	26" Hg - 232 (-0.9 - 16)	14.5 - 145 (1 - 10)	1.34 (0.59)
	SXE0573-A50-00-****	#1	-	Internal	Solenoid	Solenoid	29 - 145 (2 - 10)	-	1.02 (0.45)
	SXE0574-A50-00-****	#2	-	Internal	Solenoid	Solenoid	29 - 145 (2 - 10)	-	1.63 (0.72)
	SXE0575-A50-00-****	#3	-	Internal	Solenoid	Solenoid	29 - 145 (2 - 10)	-	2.18 (0.96)
	SXE0573-A60-00-****	#1	Integral	Internal	Solenoid	Solenoid	29 - 145 (2 - 10)	-	1.02 (0.45)
	SXE0574-A60-00-****	#2	Integral	Internal	Solenoid	Solenoid	29 - 145 (2 - 10)	-	1.63 (0.72)
	SXE0573-A55-00-****	#1	-	External	Solenoid	Solenoid	26" Hg - 232 (-0.9 - 16)	29 - 145 (2 - 10)	1.02 (0.45)
	SXE0574-A55-00-****	#2	-	External	Solenoid	Solenoid	26" Hg - 232 (-0.9 - 16)	29 - 145 (2 - 10)	1.63 (0.72)
	SXE0575-A55-00-****	#3	-	External	Solenoid	Solenoid	26" Hg - 232 (-0.9 - 16)	29 - 145 (2 - 10)	2.18 (0.96)
	SXE0573-A65-00-****	#1	Integral	External	Solenoid	Solenoid	26" Hg - 232 (-0.9 - 16)	29 - 145 (2 - 10)	1.02 (0.45)
	SXE0574-A65-00-****	#2	Integral	External	Solenoid	Solenoid	26" Hg - 232 (-0.9 - 16)	29 - 145 (2 - 10)	1.63 (0.72)

5/3 Solenoid Pilot Actuated Valves

	Model	Size	Flow Control	Valve Function*	Pilot Supply	Operator	Operator	Operating Pressure psig (bar)	Pilot Pressure psig (bar)	Weight lb. (kg)
	SXE9673-A60-00-****	#1	Integral	APB	Internal	Solenoid	Solenoid	29 - 145 (2 - 10)	-	1.02 (0.45)
	SXE9674-A60-00-****	#2	Integral	APB	Internal	Solenoid	Solenoid	29 - 145 (2 - 10)	-	1.63 (0.72)
	SXE9675-A50-00-****	#3	-	APB	Internal	Solenoid	Solenoid	29 - 145 (2 - 10)	-	2.18 (0.96)
	SXE9673-A65-00-****	#1	Integral	APB	External	Solenoid	Solenoid	26" Hg - 232 (-0.9 - 16)	29 - 145 (2 - 10)	1.02 (0.45)
	SXE9674-A65-00-****	#2	Integral	APB	External	Solenoid	Solenoid	26" Hg - 232 (-0.9 - 16)	29 - 145 (2 - 10)	1.63 (0.72)
	SXE9675-A55-00-****	#3	-	APB	External	Solenoid	Solenoid	26" Hg - 232 (-0.9 - 16)	29 - 145 (2 - 10)	2.18 (0.96)
	SXE9773-A60-00-****	#1	Integral	COE	Internal	Solenoid	Solenoid	29 - 145 (2 - 10)	-	1.02 (0.45)
	SXE9774-A60-00-****	#2	Integral	COE	Internal	Solenoid	Solenoid	29 - 145 (2 - 10)	-	1.63 (0.72)
	SXE9775-A50-00-****	#3	-	COE	Internal	Solenoid	Solenoid	29 - 145 (2 - 10)	-	2.18 (0.96)
	SXE9773-A65-00-****	#1	Integral	COE	External	Solenoid	Solenoid	26" Hg - 232 (-0.9 - 16)	29 - 145 (2 - 10)	1.02 (0.45)
	SXE9774-A65-00-****	#2	Integral	COE	External	Solenoid	Solenoid	26" Hg - 232 (-0.9 - 16)	29 - 145 (2 - 10)	1.63 (0.72)
	SXE9775-A55-00-****	#3	-	COE	External	Solenoid	Solenoid	26" Hg - 232 (-0.9 - 16)	29 - 145 (2 - 10)	2.18 (0.96)
	SXE9873-A60-00-****	#1	Integral	COP	Internal	Solenoid	Solenoid	29 - 14.5 (2 - 10)	-	1.02 (0.45)
	SXE9874-A60-00-****	#2	Integral	COP	Internal	Solenoid	Solenoid	29 - 14.5 (2 - 10)	-	1.63 (0.72)
	SXE9875-A50-00-****	#3	-	COP	Internal	Solenoid	Solenoid	29 - 14.5 (2 - 10)	-	2.18 (0.96)
	SXE9873-A65-00-****	#1	Integral	COP	External	Solenoid	Solenoid	26" Hg - 232 (-0.9 - 16)	29 - 145 (2 - 10)	1.02 (0.45)
	SXE9874-A65-00-****	#2	Integral	COP	External	Solenoid	Solenoid	26" Hg - 232 (-0.9 - 16)	29 - 145 (2 - 10)	1.63 (0.72)
	SXE9874-A65-00-****	#3	-	COP	External	Solenoid	Solenoid	26" Hg - 232 (-0.9 - 16)	29 - 145 (2 - 10)	2.18 (0.96)

APB = All Ports Blocked

COE = Center Open Exhaust

COP = Center Open Pressure

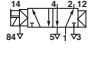
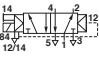
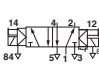
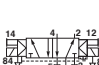
*** Voltage Codes

†Connector Codes

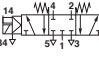
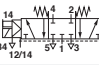
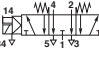
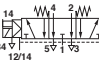
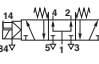
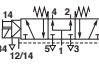
Voltage	22 mm Coil with connector interface acc. to Industrial Standard		30 mm Coil with connector interface acc. to DIN 43650 table "A"		Code	Connector Description
	Power Inrush/ Hold	Code	Power Inrush/ Hold	Code		
12 VDC	2W	12J	1.5W	22N	A	Solenoid without connector
24 VDC	2W	13J	1.5W	23N	B	Cable grip
24V 50/60 Hz	4/2.5 VA	14J	3/2 VA	24N	C	6 ft. molded cable, 0-240 VAC/VDC
48V 50/60 Hz	4/2.5 VA	16J	3/2 VA	26N	5	6 ft. molded cable with indicator light surge suppression, 24 VAC/VDC
110/120V 50/60 Hz	4/2.5 VA	18J	3/2 VA	28N	6	6 ft. molded cable with indicator light, 110V/50 Hz - 120V/60 Hz
220/240V 50/60 Hz	9/5.0 VA	19J	10/8 VA	89N		



5/2 CNOMO Solenoid Pilot Actuated Valves

	Model	Size	Flow Control		Pilot Supply Operator	Return psig (bar)	Operating Pressure psig (bar)	Pilot Pressure lb. (kg)	Weight
	SXE9573-Z70-90-***†	#1	-	Internal	Solenoid	Air Spring	14.5 - 145 (1 - 10)	-	0.74 (0.33)
	SXE9574-Z70-90-***†	#2	-	Internal	Solenoid	Air Spring	14.5 - 145 (1 - 10)	-	1.34 (0.59)
	SXE9575-Z70-90-***†	#3	-	Internal	Solenoid	Air Spring	14.5 - 145 (1 - 10)	-	1.93 (0.85)
	SXE9573-Z80-90-***†	#1	Integral	Internal	Solenoid	Air Spring	14.5 - 145 (1 - 10)	-	0.74 (0.33)
	SXE9574-Z80-90-***†	#2	Integral	Internal	Solenoid	Air Spring	14.5 - 145 (1 - 10)	-	1.34 (0.59)
	SXE9573-Z75-90-***†	#1	-	External	Solenoid	Air Spring	26" Hg - 232 (-0.9 - 16)	14.5 - 145 (1 - 10)	0.74 (0.33)
	SXE9574-Z75-90-***†	#2	-	External	Solenoid	Air Spring	26" Hg - 232 (-0.9 - 16)	14.5 - 145 (1 - 10)	1.34 (0.59)
	SXE9575-Z75-90-***†	#3	-	External	Solenoid	Air Spring	26" Hg - 232 (-0.9 - 16)	14.5 - 145 (1 - 10)	1.93 (0.85)
	SXE9573-Z85-90-***†	#1	Integral	External	Solenoid	Air Spring	26" Hg - 232 (-0.9 - 16)	14.5 - 145 (1 - 10)	0.74 (0.33)
	SXE9574-Z85-90-***†	#2	Integral	External	Solenoid	Air Spring	26" Hg - 232 (-0.9 - 16)	14.5 - 145 (1 - 10)	1.34 (0.59)
	SXE0573-Z50-90-***†	#1	-	Internal	Solenoid	Solenoid	29 - 145 (2 - 10)	-	1.02 (0.45)
	SXE0574-Z50-90-***†	#2	-	Internal	Solenoid	Solenoid	29 - 145 (2 - 10)	-	1.63 (0.72)
	SXE0575-Z50-90-***†	#3	-	Internal	Solenoid	Solenoid	29 - 145 (2 - 10)	-	2.18 (0.96)
	SXE0573-Z60-90-***†	#1	Integral	Internal	Solenoid	Solenoid	29 - 145 (2 - 10)	-	1.02 (0.45)
	SXE0574-Z60-90-***†	#2	Integral	Internal	Solenoid	Solenoid	29 - 145 (2 - 10)	-	1.63 (0.72)
	SXE0573-Z55-90-***†	#1	-	External	Solenoid	Solenoid	26" Hg - 232 (-0.9 - 16)	29 - 145 (2 - 10)	1.02 (0.45)
	SXE0574-Z55-90-***†	#2	-	External	Solenoid	Solenoid	26" Hg - 232 (-0.9 - 16)	29 - 145 (2 - 10)	1.63 (0.72)
	SXE0575-Z55-90-***†	#3	-	External	Solenoid	Solenoid	26" Hg - 232 (-0.9 - 16)	29 - 145 (2 - 10)	2.18 (0.96)
	SXE0573-Z65-90-***†	#1	Integral	External	Solenoid	Solenoid	26" Hg - 232 (-0.9 - 16)	29 - 145 (2 - 10)	1.02 (0.45)
	SXE0574-Z65-90-***†	#2	Integral	External	Solenoid	Solenoid	26" Hg - 232 (-0.9 - 16)	29 - 145 (2 - 10)	1.63 (0.72)

5/3 CNOMO Solenoid Pilot Actuated Valves

	Model	Size	Flow Control	Valve Function*	Pilot Supply Operator	Operator psig (bar)	Operating Pressure psig (bar)	Pilot Pressure lb. (kg)	Weight
	SXE9673-Z60-90-***†	#1	Integral	APB	Internal	Solenoid	29 - 145 (2 - 10)	-	1.02 (0.45)
	SXE9674-Z60-90-***†	#2	Integral	APB	Internal	Solenoid	29 - 145 (2 - 10)	-	1.63 (0.72)
	SXE9675-Z60-90-***†	#3	-	APB	Internal	Solenoid	29 - 145 (2 - 10)	-	2.18 (0.96)
	SXE9673-Z65-90-***†	#1	Integral	APB	External	Solenoid	26" Hg - 232 (-0.9 - 16)	29 - 145 (2 - 10)	1.02 (0.45)
	SXE9674-Z65-90-***†	#2	Integral	APB	External	Solenoid	26" Hg - 232 (-0.9 - 16)	29 - 145 (2 - 10)	1.63 (0.72)
	SXE9675-Z65-90-***†	#3	-	APB	External	Solenoid	26" Hg - 232 (-0.9 - 16)	29 - 145 (2 - 10)	2.18 (0.96)
	SXE9773-Z60-90-***†	#1	Integral	COE	Internal	Solenoid	29 - 145 (2 - 10)	-	1.02 (0.45)
	SXE9774-Z60-90-***†	#2	Integral	COE	Internal	Solenoid	29 - 145 (2 - 10)	-	1.63 (0.72)
	SXE9775-Z60-90-***†	#3	-	COE	Internal	Solenoid	29 - 145 (2 - 10)	-	2.18 (0.96)
	SXE9773-Z65-90-***†	#1	Integral	COE	External	Solenoid	26" Hg - 232 (-0.9 - 16)	29 - 145 (2 - 10)	1.02 (0.45)
	SXE9774-Z65-90-***†	#2	Integral	COE	External	Solenoid	26" Hg - 232 (-0.9 - 16)	29 - 145 (2 - 10)	1.63 (0.72)
	SXE9775-Z65-90-***†	#3	-	COE	External	Solenoid	26" Hg - 232 (-0.9 - 16)	29 - 145 (2 - 10)	2.18 (0.96)
	SXE9873-Z60-90-***†	#1	Integral	COP	Internal	Solenoid	29 - 145 (2 - 10)	-	1.02 (0.45)
	SXE9874-Z60-90-***†	#2	Integral	COP	Internal	Solenoid	29 - 145 (2 - 10)	-	1.63 (0.72)
	SXE9875-Z60-90-***†	#3	-	COP	Internal	Solenoid	29 - 145 (2 - 10)	-	2.18 (0.96)
	SXE9873-Z65-90-***†	#1	Integral	COP	External	Solenoid	26" Hg - 232 (-0.9 - 16)	29 - 145 (2 - 10)	1.02 (0.45)
	SXE9874-Z65-90-***†	#2	Integral	COP	External	Solenoid	26" Hg - 232 (-0.9 - 16)	29 - 145 (2 - 10)	1.63 (0.72)
	SXE9875-Z65-90-***†	#3	-	COP	External	Solenoid	26" Hg - 232 (-0.9 - 16)	29 - 145 (2 - 10)	2.18 (0.96)

APB = All Ports Blocked

COE = Center Open Exhaust

COP = Center Open Pressure

*** Voltage Codes

Voltage	22 mm Coil with connector interface acc. to Industrial Standard		30 mm Coil with connector interface acc. to DIN 43650 table "A"	
	Power Inrush/Hold	Code	Power Inrush/Hold	Code
12 VDC	2W	12J	1.5W	22N
24 VDC	2W	13J	1.5W	23N
24V 50/60 Hz	4/2.5 VA	14J	3/2 VA	24N
48V 50/60 Hz	4/2.5 VA	16J	3/2 VA	26N
110/120V 50/60 Hz	4/2.5 VA	18J	3/2 VA	28N
220/240V 50/60 Hz	9/5.0 VA	19J	10/8 VA	89N

†Connector Codes

Code	Connector Description
A	Solenoid without connector
B	Cable grip
C	6 ft. molded cable, 0-240 VAC/VDC
5	6 ft. molded cable with indicator light surge suppression, 24 VAC/VDC
6	6 ft. molded cable with indicator light, 110V/50 Hz - 120V/60 Hz

Replacement Coils and Connectors

22 mm Coil with connector interface acc. to Industrial Standard Coil Part.-no.	30 mm Coil with connector interface acc. to DIN 43650 table "A" Coil Part.-no.	22 mm Connector acc. to Industrial Standard	30 mm Connector acc. to DIN 43650 table "A"
54469-01	V10633-A22N	-	-
54469-02	V10633-A23N	54934-01	54933-05
54469-04	V10633-A24N	54934-21	54933-06
54469-07	V10633-A26N	54934-30	54933-09
54469-03	V10633-A28N	54934-35	M/P43316/23
54469-08	V10633-A89N	-	-

Other Connectors available on request.

5/2 Air Pilot Actuated Valves

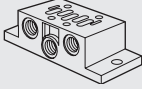
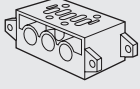
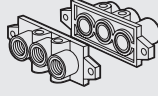

	Model	Size	Flow	Operator Control	Return	Operating Pressure psig (bar)	Pilot Pressure psig (bar)	Weight lb. (kg)
	SXP9573-170-00	#1	-	Air	Spring	26" Hg - 232 (-0.9 - 16)	23.2 - 232 (1.6 - 16)	0.47 (0.21)
	SXP9574-170-00	#2	-	Air	Spring	26" Hg - 232 (-0.9 - 16)	23.2 - 232 (1.6 - 16)	1.02 (0.45)
	SXP9575-170-00	#3	-	Air	Spring	26" Hg - 232 (-0.9 - 16)	23.2 - 232 (1.6 - 16)	1.63 (0.72)
	SXP9573-180-00	#1	Integral	Air	Spring	26" Hg - 232 (-0.9 - 16)	23.2 - 232 (1.6 - 16)	0.47 (0.21)
	SXP9574-180-00	#2	Integral	Air	Spring	26" Hg - 232 (-0.9 - 16)	23.2 - 232 (1.6 - 16)	1.02 (0.45)
	SXP0573-170-00	#1	-	Air	Air	26" Hg - 232 (-0.9 - 16)	29 - 232 (2 - 16)	0.68 (0.30)
	SXP0574-170-00	#2	-	Air	Air	26" Hg - 232 (-0.9 - 16)	29 - 232 (2 - 16)	1.13 (0.50)
	SXP0575-170-00	#3	-	Air	Air	26" Hg - 232 (-0.9 - 16)	29 - 232 (2 - 16)	1.63 (0.72)
	SXP0573-180-00	#1	Integral	Air	Air	26" Hg - 232 (-0.9 - 16)	29 - 232 (2 - 16)	0.68 (0.30)
	SXP0574-180-00	#2	Integral	Air	Air	26" Hg - 232 (-0.9 - 16)	29 - 232 (2 - 16)	1.13 (0.50)

5/3 Air Pilot Actuated Valves

	Model	Size	Flow Control	Valve Function*	Operator	Operator	Operating Pressure psig (bar)	Pilot Pressure psig (bar)	Weight lb. (kg)
	SXP9673-180-00	#1	Integral	APB	Air	Air	26" Hg - 232 (-0.9 - 16)	29 - 232 (2 - 16)	0.57 (0.25)
	SXP9674-180-00	#2	Integral	APB	Air	Air	26" Hg - 232 (-0.9 - 16)	29 - 232 (2 - 16)	1.32 (0.58)
	SXP9675-170-00	#3	-	APB	Air	Air	26" Hg - 232 (-0.9 - 16)	29 - 232 (2 - 16)	1.82 (0.80)
	SXP9773-180-00	#1	Integral	COE	Air	Air	26" Hg - 232 (-0.9 - 16)	29 - 232 (2 - 16)	0.57 (0.25)
	SXP9774-180-00	#2	Integral	COE	Air	Air	26" Hg - 232 (-0.9 - 16)	29 - 232 (2 - 16)	1.32 (0.58)
	SXP9775-170-00	#3	-	COE	Air	Air	26" Hg - 232 (-0.9 - 16)	29 - 232 (2 - 16)	1.82 (0.80)
	SXP9873-180-00	#1	Integral	COP	Air	Air	26" Hg - 232 (-0.9 - 16)	29 - 232 (2 - 16)	0.57 (0.25)
	SXP9874-180-00	#2	Integral	COP	Air	Air	26" Hg - 232 (-0.9 - 16)	29 - 232 (2 - 16)	1.32 (0.58)
	SXP9875-170-00	#3	-	COP	Air	Air	26" Hg - 232 (-0.9 - 16)	29 - 232 (2 - 16)	1.82 (0.80)

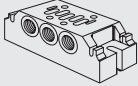


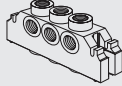
APB = All Ports Blocked
 COE = Center Open Exhaust
 COP = Center Open Pressure

VDMA 24 345 Base Range

VDMA 24 345	Form 'A' Single Station Sub-base Side Ported	Form 'C' Modular Sub-base Bottom Ported	Form 'D' Modular Sub-base End Plates (2)	Blanking disk * (dual supply)
				
NPT #1 models (1/4)	C/P19126	239-238B	239-289B	239-251
NPT #2 models (3/8)	C/P19132	239-242B	239-291B	239-252
NPT #3 models (1/2)	C/P19138	239-246B	239-293B	239-253
ISO G #1 models	M/P19126	CQM/22152/3/21	CQM/22152/3/22	FP8382
ISO G #2 models	M/P19132	CQM/22253/3/21	CQM/22253/3/22	FP8482
ISO G #3 models	M/P19138	CQM/22354/3/21	CQM/22354/3/22	FP8582

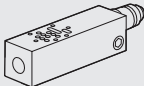
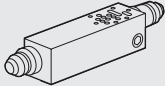
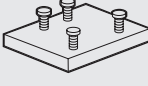
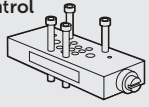
* Only suitable for specific base range.

Universal Base Range

	Modular Sub-base Side and bottom por- ted	Blanking Disk** (dual supply)	Side End Plate All Ports Closed	Single End Plate End Ports Open
				
ISO #1 models (G1/4)	CQM/22152/3/27	M/P43173	CQM/22152/3/28	CQM/22152/3/31
ISO #2 models (G3/8)	CQM/22253/3/27	M/P43174	CQM/22253/3/28	CQM/22253/3/31

** Universal base range only.

Accessories

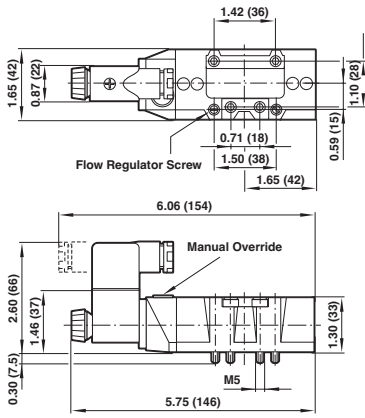
	Single Pressure Regulator port 1 regulated	Pressure Regulator ports 2 & 4 regulated	Blanking Plate	Sandwich Flow Control
				
#1 models	RM1A-8B†	DRM1A-8-8B†	CQM/22152/3/23	
#2 models	RM2A-8B†	DRM2A-8-8B†	CQM/22253/3/23	
#3 models	-	-	CQM/22354/3/23	CQM/22354/3/26

† CNOMO style valves recommended

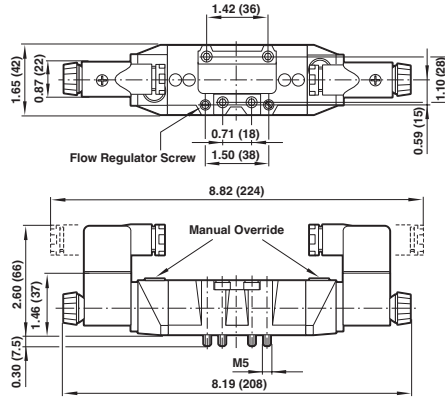
Sandwich Regulators (valve mounts to regulator, regulator mounts to subbase)

	Single Pressure port 1 regulated	Dual Pressure ports 2 & 4	Single Pressure port 2	Single Pressure Port 4
ISO #1	V71020-KB1	V71022-KB4	V71022-KB2	V71022-KB3

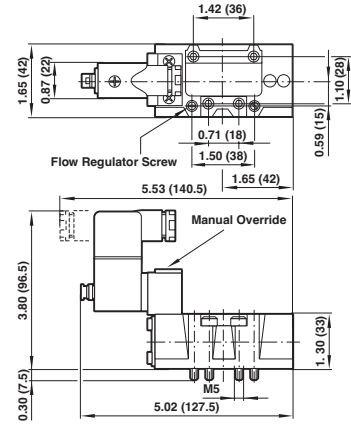
SXE 9573 – A Models
Single End Solenoid Pilot Valves
Size #1



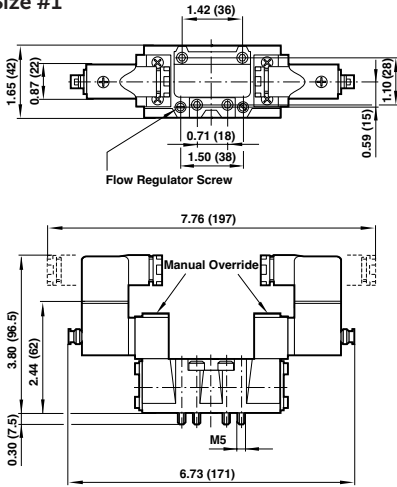
SXE 0573–A and SXE9*73–A Models
Double End Solenoid Pilot Valves
Size #1



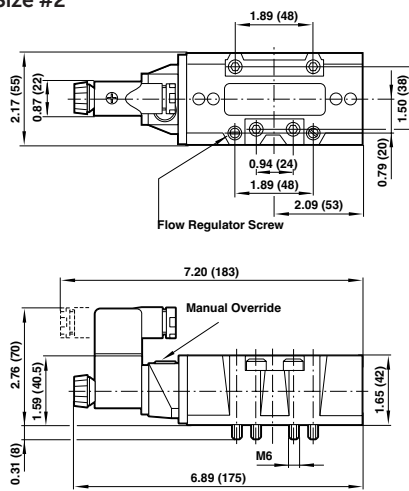
SXE 9573–Z Models
Single CNOMO Solenoid Pilot Valves
Size #1



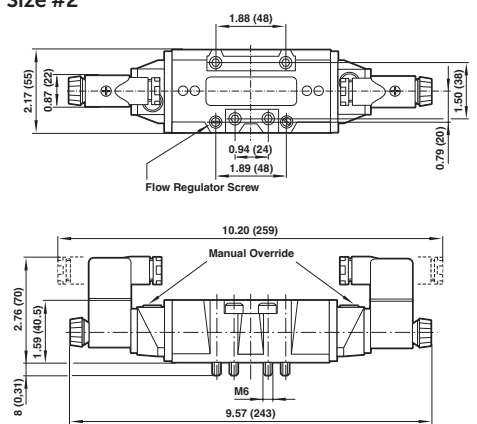
SXE 0573–Z and SXE 9*73–Z Models
Double CNOMO Solenoid Pilot Valves
Size #1



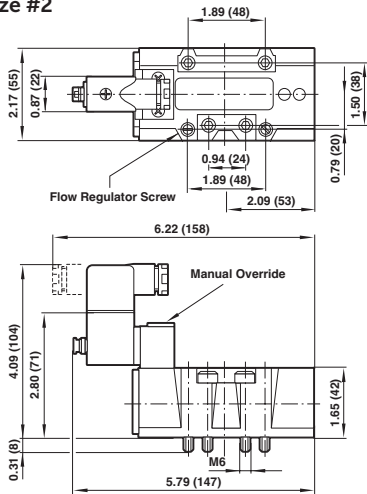
SXE 9574–A Models
Single End Solenoid Pilot Valves
Size #2



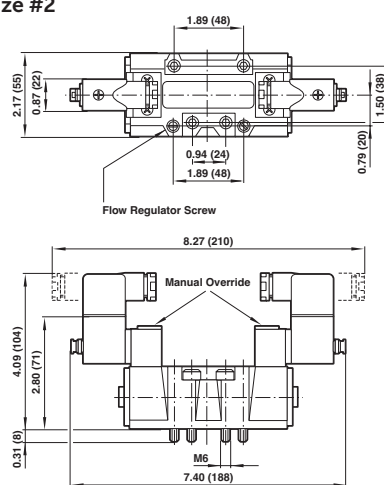
SXE 0574–A, SXE 9*74–A Models
Double End Solenoid Pilot Valves
Size #2



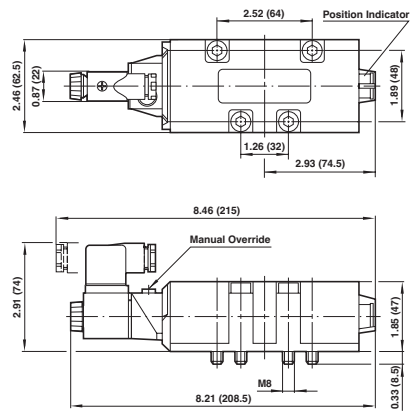
SXE 9574–Z Models
Single CNOMO Solenoid Pilot Valves
Size #2



SXE 0574–Z and SXE 9*74–Z Models
Double CNOMO Solenoid Pilot Valves
Size #2

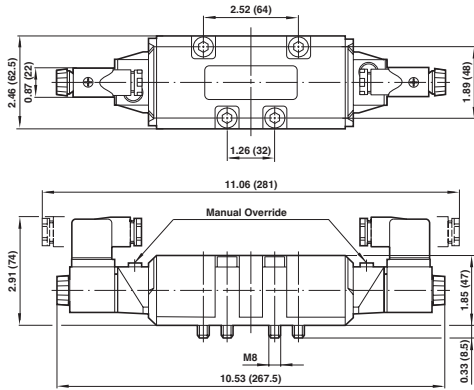


SXE 9575–A Models
Single End Solenoid Pilot Valves
Size #3

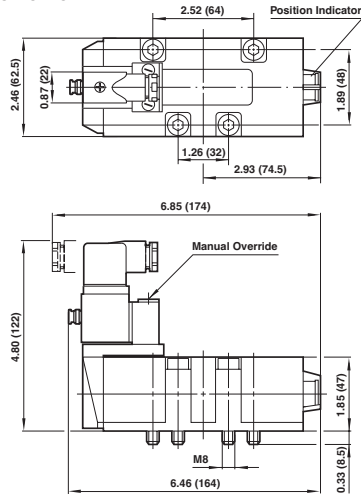


Dimensions in inches (mm)

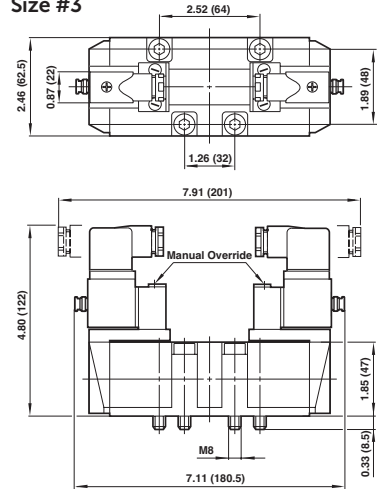
SXE 0575-A and SXE 9*75-A Models
Double End Solenoid Pilot Valves
Size #3



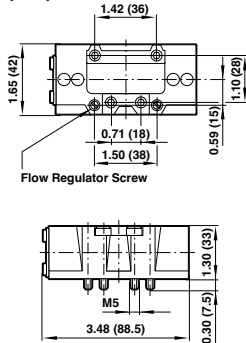
SXE 9575-Z Models
Single CNOMO Solenoid Pilot Valves
Size #3



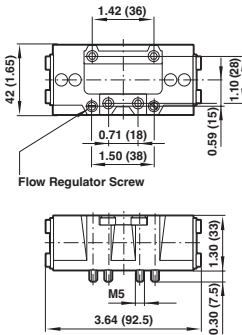
SXE 0575-Z and SXE 9*75-Z Models
Double CNOMO Solenoid Pilot Valves
Size #3



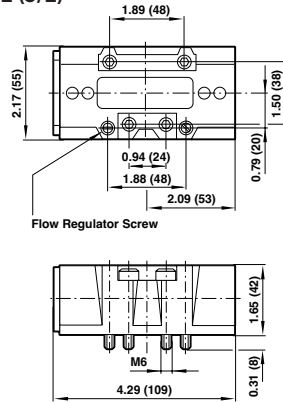
SXP 9573-1 Models
Single Air Pilot Valves
Size #1 (5/2)



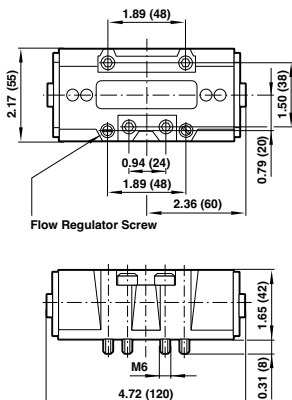
SXP 0573-1 and SXP 9*73-1 Models
Double Air Pilot, Spring Centered Valves
Size #1 (5/3)



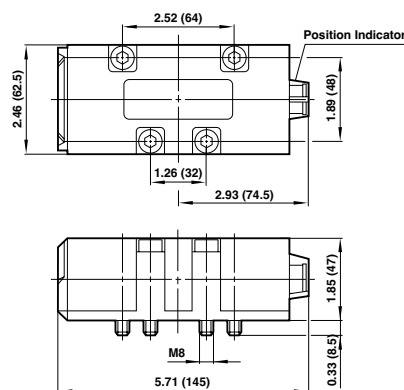
SXP *574-1 Models
Single and Double Air Pilot Valves
Size #2 (5/2)



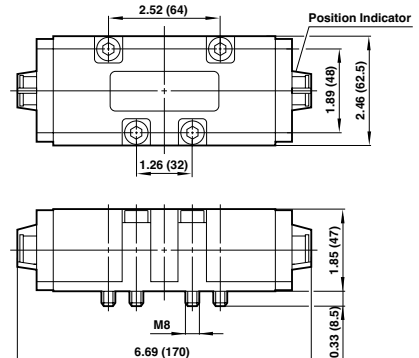
SXP 9*74-1 Models
Double Air Pilot, Spring Centered Valves
Size #2 (5/3)



SXP *575-1 Models
Single and Double Air Pilot Valves
Size #3 (5/2)



SXP 9*75-1 Models
Double Air Pilot, Spring Centered Valves
Size #3 (5/3)



Dimensions in inches (mm)

SXE 9574 – A70 – 00 – 18 J B

Operator Type			Substitute
Solenoid pilot operated valve			SXE
Air pilot operated valve			SXP
Signal Duration			Substitute
Momentary (2-position double operator only)			0
Continuous			9
Internal Variations			Substitute
5-Port/2-position			5
5-Port/3-position, spring centered, all ports blocked			6
5-Port/3-position, spring centered, cylinder ports open to exhaust			7
5-Port/3-position, spring centered, cylinder ports open to pressure			8
Mounting Type			Substitute
ISO Star Series			7
Size			Substitute
Size 1			3
Size 2			4
Size 3			5
Solenoid Type			Substitute
Standard solenoid pilot operator			A
CNOMO solenoid pilot operator			Z
Valve Body Options			
Coils	Speed Control		Substitute
double solenoid	no		5
double solenoid	yes		6
single solenoid	no		7
single solenoid	yes		8

Connector		Substitute
No electrical connector		A
Cable grip		B
6 ft molded cable, 0-240 VAC/VDC		C
6 ft molded cable, w/indicator light, surge suppression, 24 VAC/VDC		5
6 ft molded cable, 110-120 VAC/VDC		6
Air pilot operated		Left Blank
Connector Interface		Substitute
22 mm coil with connector interface according to Industrial Standard		J
22 mm coil with connector interface according to DIN 43650 table "B"		L
30 mm coil with connector interface according to DIN 43650 table "A"		N
No coil or air pilot operated		Blank
Solenoid Voltage		Substitute
12 VDC		2
24 VDC		3
24V 50/60 Hz		4
48V 50/60 Hz		6
110/120V 50/60 Hz		8
220/240V 50/60 Hz		9
No coil or air pilot operated		Blank
Coil		Substitute
20 mm coil		1
30 mm coil		2
Manual Override		Substitute
Combination locking/nonlocking		00
Nonlocking		01
Low watt locking (CNOMO)		90
Pilot Supply/Integral Air Return Operator		Substitute
Internal / integral air return		0
Internal / spring return		1
External / integral air		5
External / spring return		6