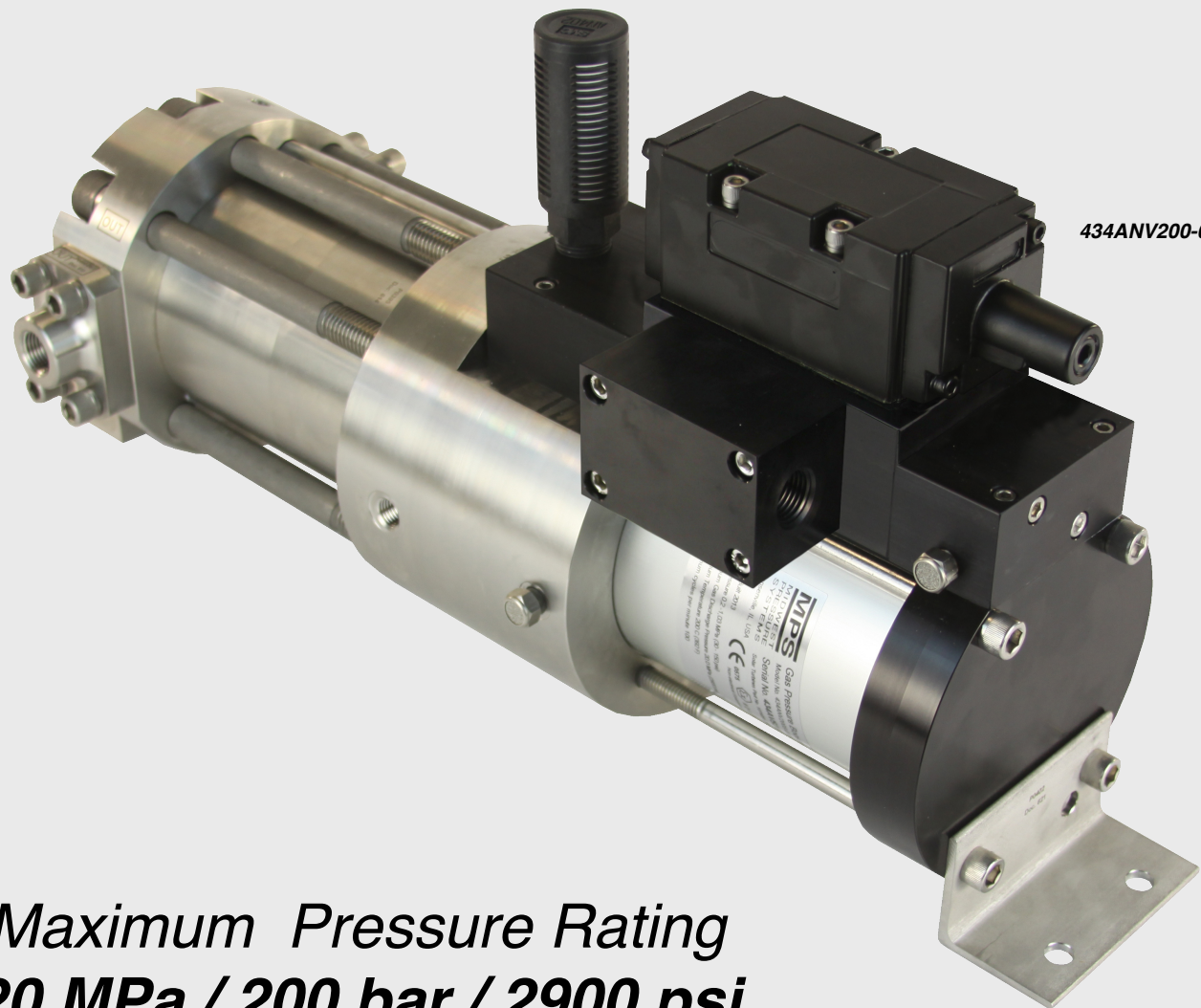



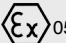
434 Series



*Maximum Pressure Rating
20 MPa / 200 bar / 2900 psi*

Model Specifications

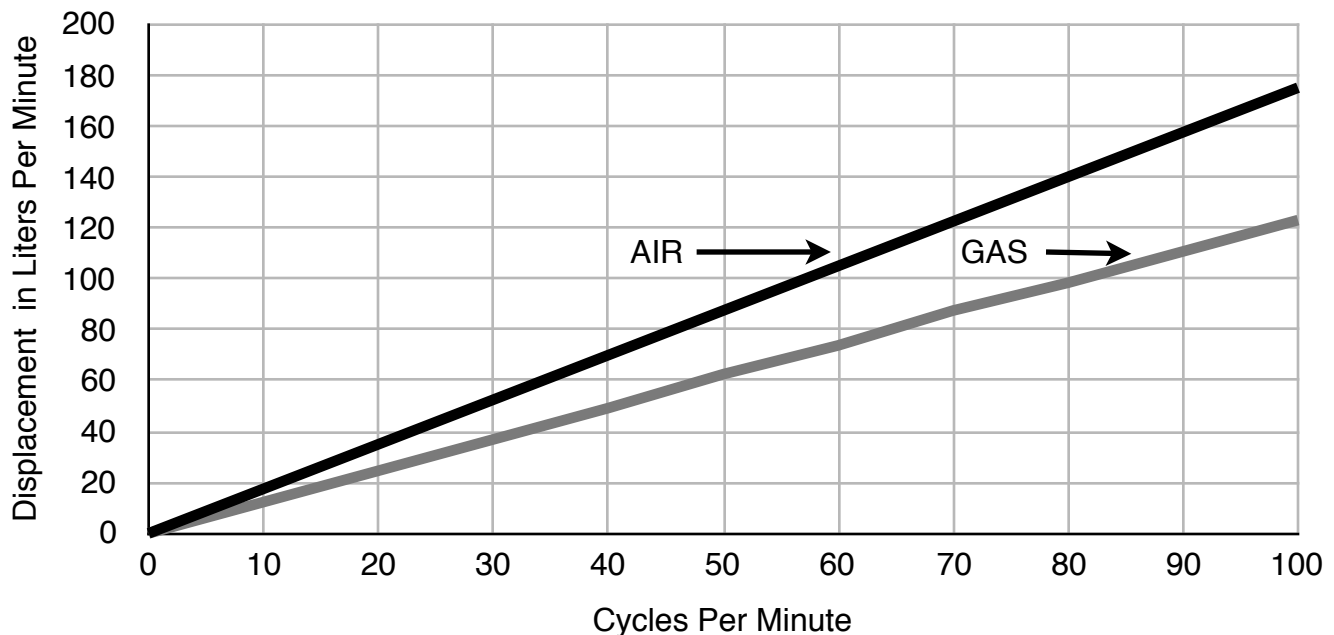
This booster series is designed in accordance with the ASME Boiler and Pressure Vessel Code Section VIII, Div. 1 (not stamped). The gas wetted components comply with:

NACE MR0175/ISO15156-2, MR0103-2010 and CE ATEX   0575 II 2 G T3 200 Deg. C

Maximum Gas Discharge Pressure	20 MPa
Maximum Gas Discharge Temperature	200 °C
Maximum cycle rate (Note 1)	100 cpm
Gas cylinder bore diameter	85.7 mm
Gas displacement per cycle	1.23 liters
Maximum gas displacement flowrate	123 l/min
Nominal Pressure boost ratio (Note 2)	1.1/1
Piston rod diameter	15.9 mm

Maximum air drive pressure (Note 3)	1.03 MPa
Drive air temperature range	0 to 75°C
Air cylinder bore diameter	102 mm
Air displacement per cycle	1.75 liters
Maximum air displacement	175 l/min
Stroke length	109 mm
Booster weight (SS drive / Alum. drive)	48 / 42 kg
Ambient temperature (Note 4)	-15 to 75 °C

434 Models - Air and Gas Displacement vs. Cycle Rate



Note 1. A cycle consists of a forward and a reverse stroke.

Note 2. This is a nominal, operating ratio of the gas pressure increase over the drive air pressure. It is not the maximum ratio.

Note 3. Nitrogen or clean natural gas may also be used for the drive gas.

Note 4. Where ambient temperatures fall below 0°C a heater is required for the drive air.

Model Numbering System

434 ANV 200 - 0000 - E

Drive assembly material

- A – anodized aluminum
- S – stainless steel

Wetted parts material

- N – 316L SS
- D – 22% chrome duplex SS
- F – Super Duplex

Wetted static seal material

(See Elastomer Details)

Pipe size

- 0 – 1/2 NPT inlet
- 1 – G 1/2 BSPP
- 2 – 1 NPT
- 4 – 3/4 NPT
- 7 – SAE J1926 1-1/16
- 8 – G 3/4 BSPP
- A – 3/4 inch butt weld
- B – 1 inch butt weld
- C – 1 inch with 1/2 Sch 80 vent port butt weld
- D – 1/2 inch butt weld
- E – 3/4 inch with 1/2 Sch 80 vent port butt weld
- F – 1 inch with 3/4 Sch 80 vent port butt weld
- W2 – Replacement booster • no butt weld connectors (2 flange)
- W3 – Replacement booster • no butt weld connectors (3 flange)

Pipe ports and butt weld connectors

- 0 – 1/4 NPT vent connections (two)
- 2 – inlet & discharge
- 3 – inlet, discharge & vent
- 1 – G 1/4 BSPP vent
- 4 – 3/4 NPT vent
- 5 – 1/2 NPT vent

Pipe schedule

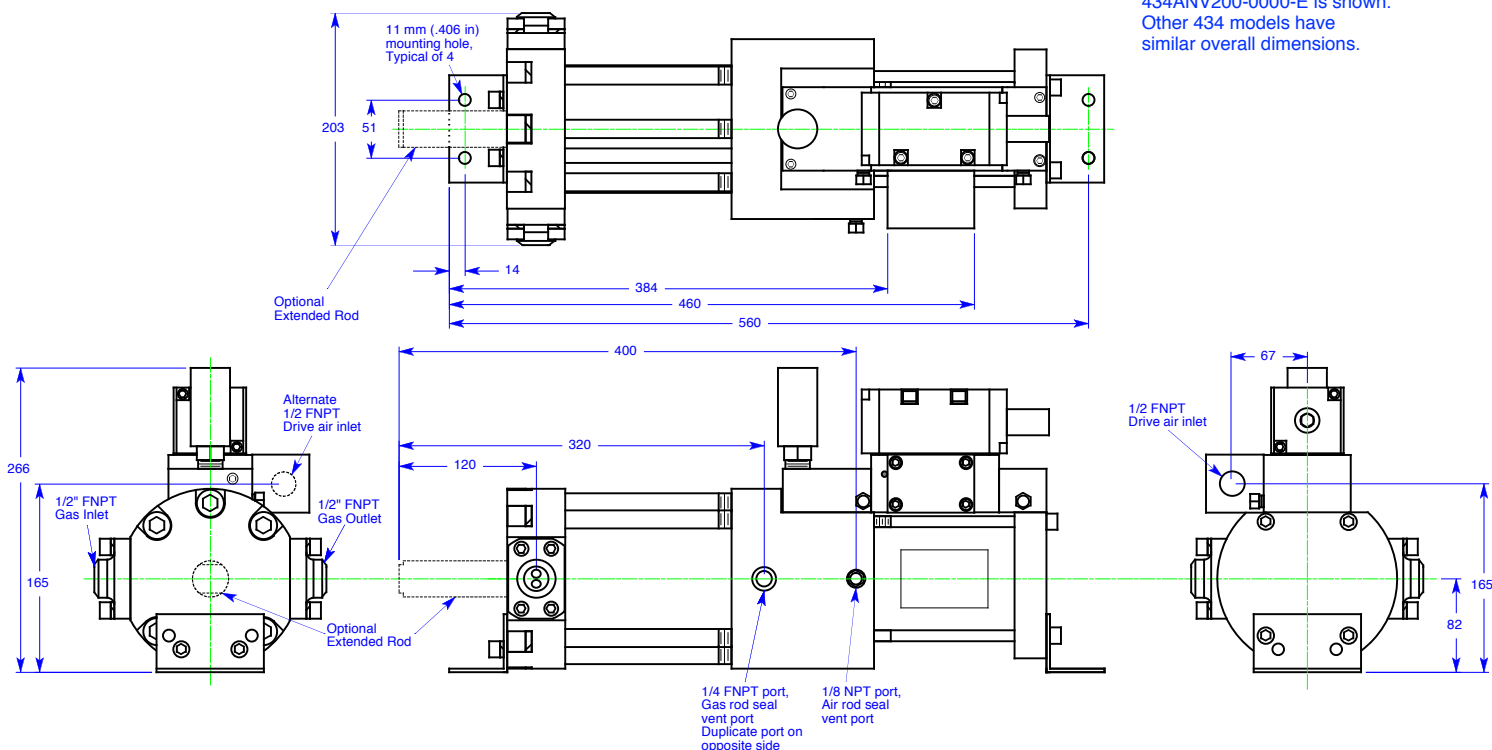
- 00 – 1/2 NPT discharge
- 40 – schedule 40
- 80 – schedule 80
- 16 – schedule 160

Additional Option Codes

(See Option Descriptions)

Typical Dimensions

Dimensions are in millimeters



434ANV200-0000-E is shown. Other 434 models have similar overall dimensions.

GCS
GAS COMPRESSION
SYSTEMS