

Pilot operated check valves from the Parker series CPOM are in sandwich design for easy configuration of stack systems. Depending on the function required, one or two pilot operated check valves are arranged in the ports A and/or B. The free flow direction is always from the valve side to the manifold side.

Function

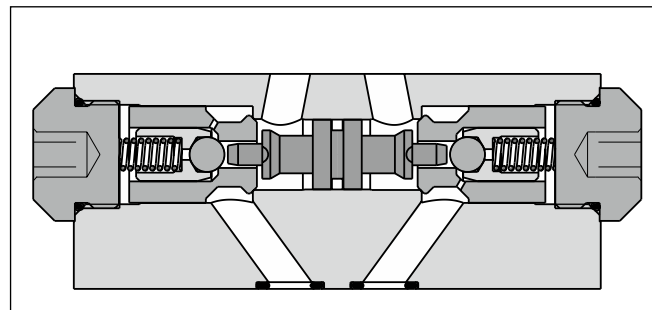
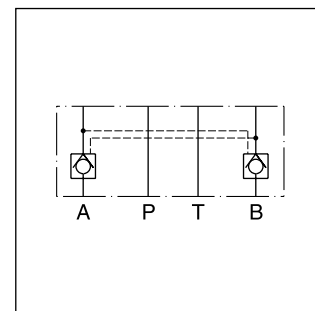
The check valves open when flowing to the consumer side, where the opposing check valve is hydraulically-mechanically pilot operated simultaneously by a control spool, and thus the return flow is enabled from other consumer sides.

Features

- The valve bodies of the Parker valve series CPOM are made of steel.
- The valve poppet is precisely guided into the steel sleeve and ensures a good seal on the seat.
- When the valve poppet is open, the large cross-section allows high flow rates at low differential pressure.
- Pre-opening for CPOM*HT to achieve smooth opening.



CPOM3



Ordering code

With pre-opening

| | | | | | | | | |
|--|------------------------------------|------|--------------|------------------|-----------------|----------|---------|---|
| | CPOM | | | | HT | V | | |
| | Hydraulically operated check valve | Size | Poppet style | Opening pressure | Pilot ratio 1:6 | Seal FPM | Options | Design series (not required for ordering) |

| | | | | | | | | |
|------|------|--|--|--|--|--|------|----------------------------|
| Code | Size | | | | | | Code | Options |
| 2 | NG06 | | | | | | omit | without coating |
| 3 | NG10 | | | | | | 1P | ZnNi coating ¹⁾ |

| | | | | | | | | |
|------|------------|--|--|--|--|--|------|----------|
| Code | Connection | | | | | | Code | Pressure |
| AA | only A | | | | | | omit | Standard |
| BB | only B | | | | | | 25 | 2.5 bar |
| DD | A and B | | | | | | 70 | 7.0 bar |

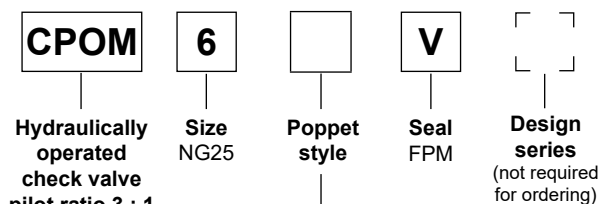
With pre-opening

| | | | | | | |
|--|------------------------------------|-----------|--------------|------------------|----------|---|
| | CPOM | 4 | | HT | V | |
| | Hydraulically operated check valve | Size NG16 | Poppet style | Pilot ratio 13:1 | Seal FPM | Design series (not required for ordering) |

| | |
|------|------------|
| Code | Connection |
| AA | only A |
| BB | only B |
| DD | A and B |

¹⁾ On request.

Without pre-opening



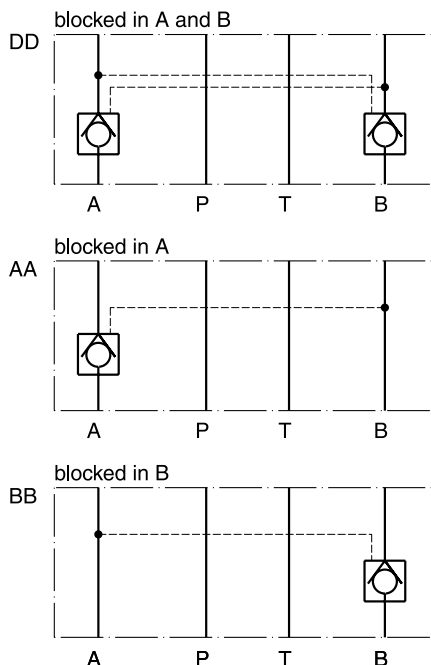
| Code | Connection |
|------|------------|
| AA | only A |
| BB | only B |
| DD | A and B |

Technical data

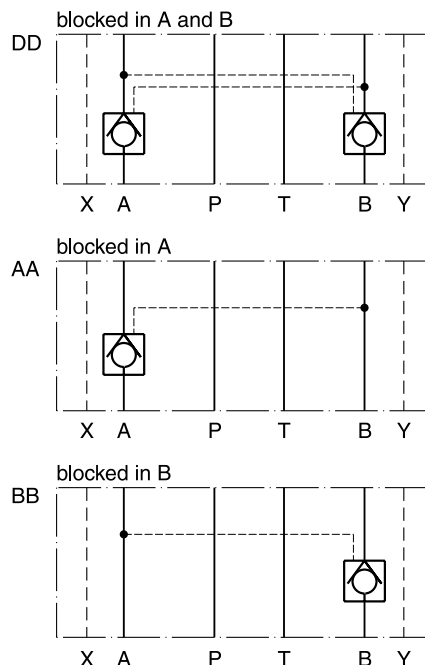
| General | | CPOM2 | CPOM3 | CPOM4 | CPOM6 |
|---------------------------|------------------------------|--------------------------------------|-------|--------|-------|
| Series | | CPOM2 | CPOM3 | CPOM4 | CPOM6 |
| Nominal size | | NG06 | NG10 | NG16 | NG25 |
| Mounting interface | | ISO 4401 | | | |
| Ambient temperature | [°C] | -20...+70 | | | |
| MTTF _D value | [years] | 150 | | | |
| Weight | [kg] | 1.2 | 3.1 | 7.65 | 9.5 |
| Hydraulic | | | | | |
| Max. operating pressure | [bar] | 350 | 350 | 350 | 210 |
| Standard opening pressure | [bar] | 1.5 | 1.5 | 2.0 | 0.4 |
| Opening ratio | | 1 : 6 | 1 : 6 | 1 : 13 | 1 : 3 |
| Fluid | | Hydraulic oil according to DIN 51524 | | | |
| Fluid temperature | [°C] | -20...+70 | | | |
| Viscosity, permitted | [cSt] / [mm ² /s] | 20...400 | | | |
| | recommended | 30...80 | | | |
| Filtration | | ISO 4406; 18/16/13 | | | |

Schematics

CPOM2 / CPOM3

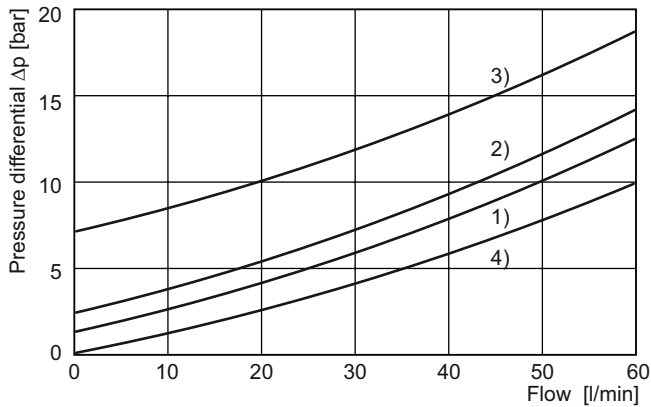


CPOM4 / CPOM6



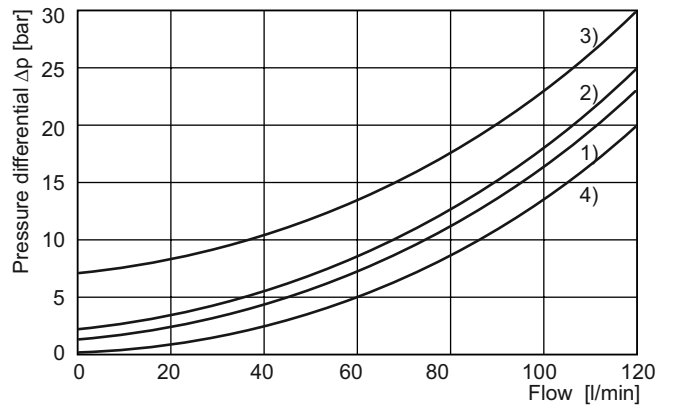
$\Delta p/Q$ performance curves

CPOM2



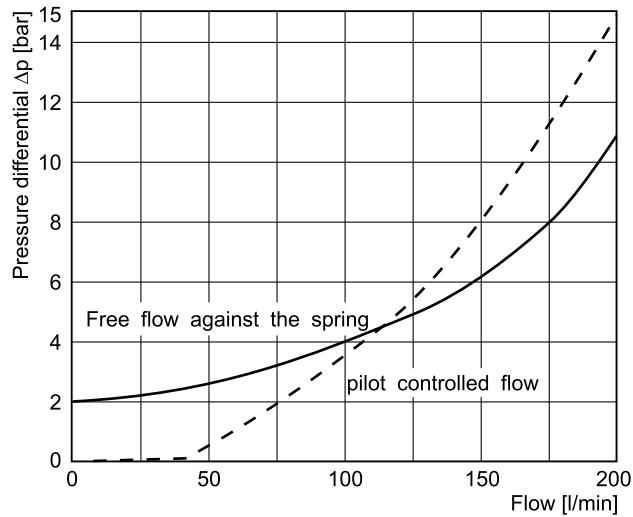
- 1) 1.5 bar
- 2) 2.5 bar
- 3) 7.0 bar

CPOM3

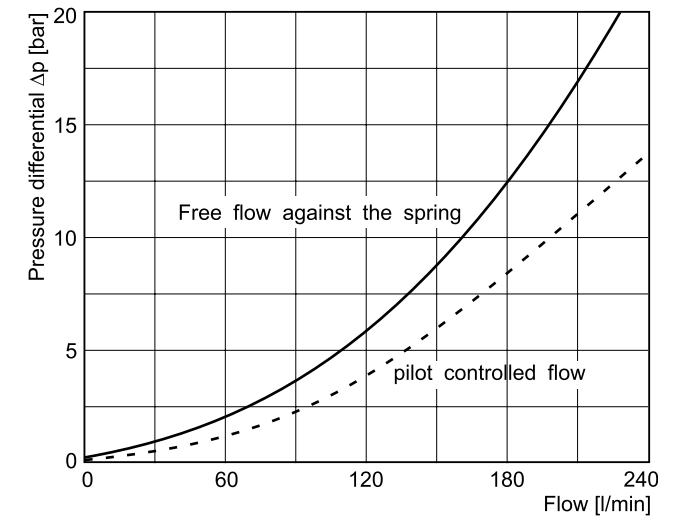


- 1) 1.5 bar
- 2) 2.5 bar
- 3) 7.0 bar

CPOM4 (type HT)



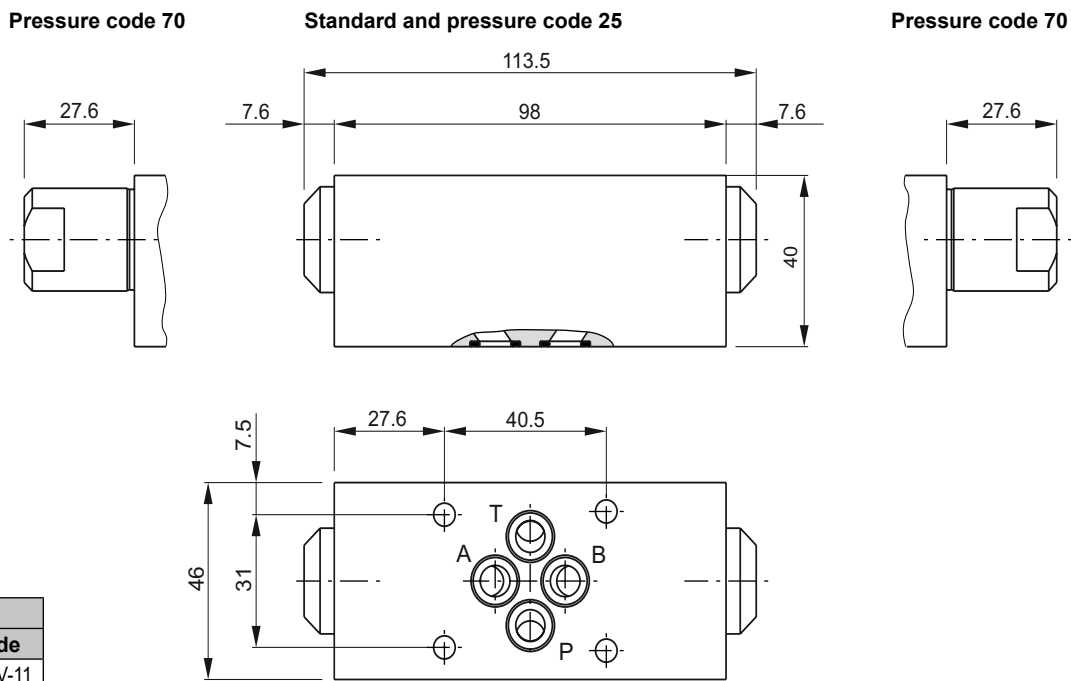
CPOM6



All characteristic curves measured with oil viscosity 33.0 mm²/s (cSt)

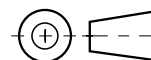
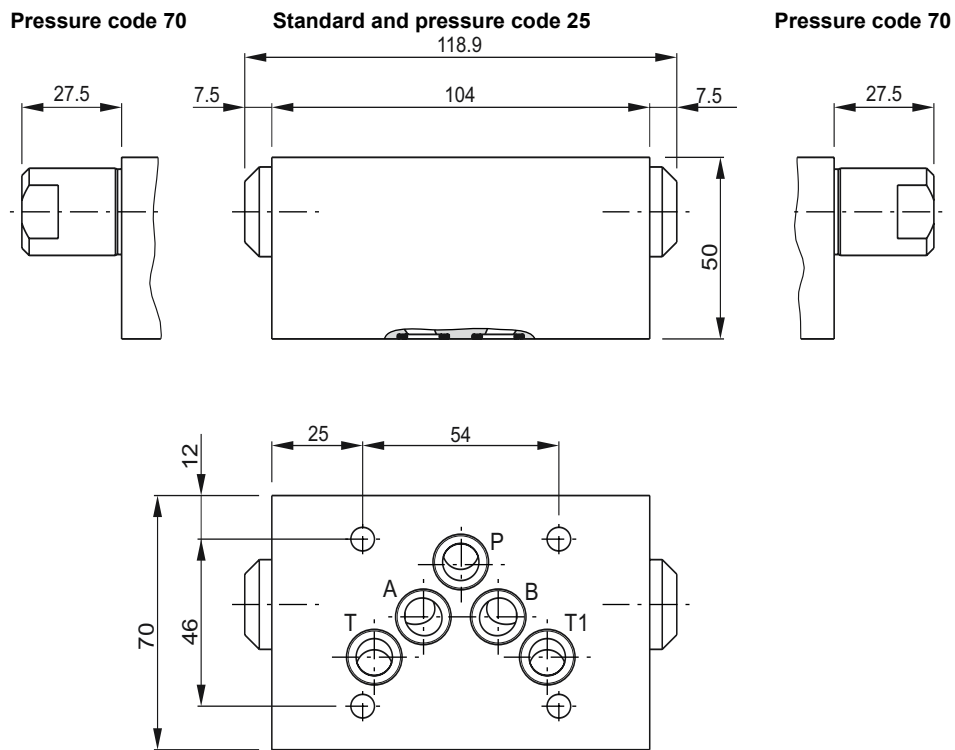
CPOM UK.indd 27.03.24

CPOM2

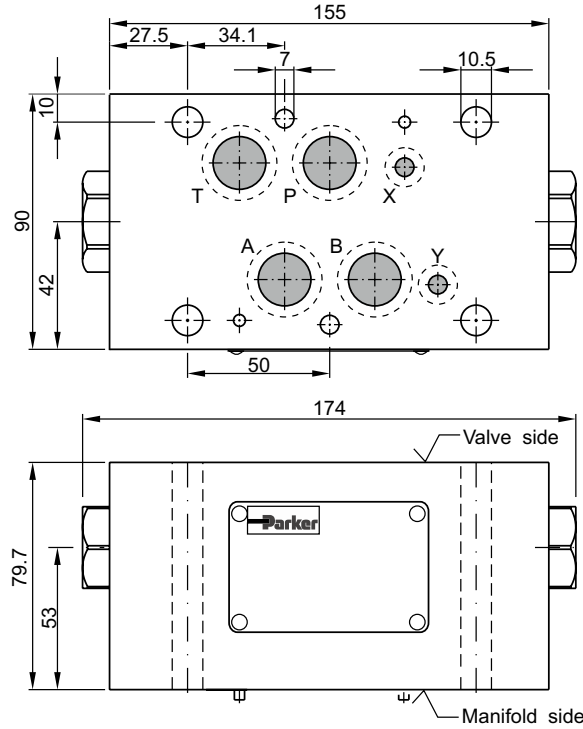


7

CPOM3

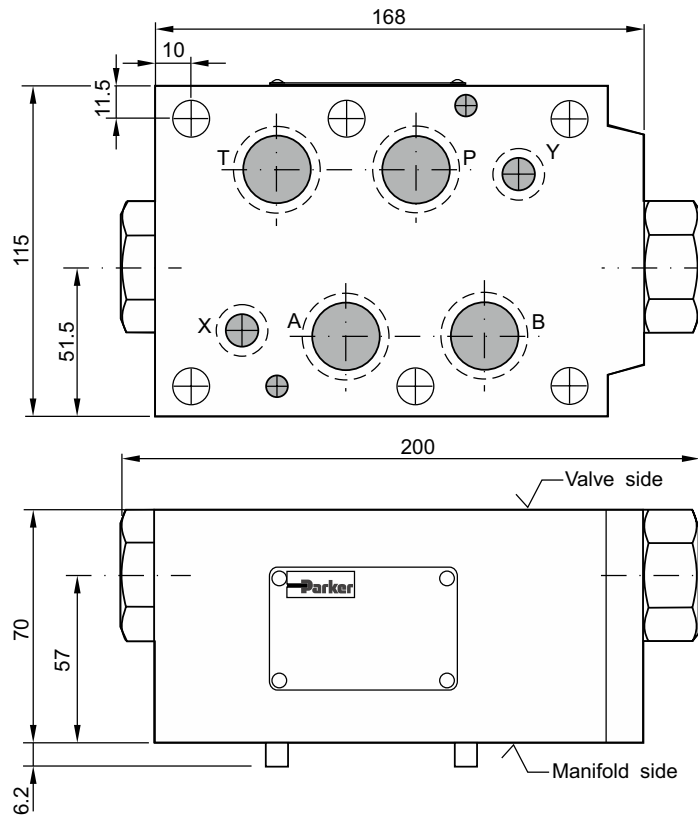


CPOM4



| Seal kit CPOM4 | |
|----------------|-------------|
| Seal | Order code |
| V | SK-CPOM4HTV |

CPOM6



| Seal kit CPOM6 | |
|----------------|---------------|
| Seal | Order code |
| V | SK-CPOM6-V-20 |

