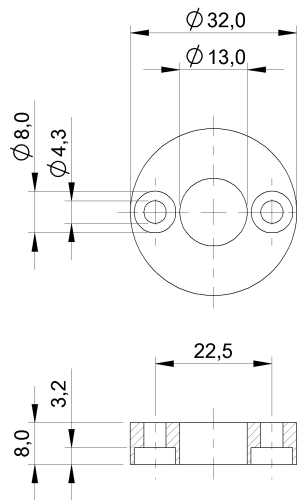


Mechanical Accessories  
BTL-P-1013-4R  
Order Code: BAM013L

# BALLUFF



## Basic features

Principle of operation BTL magnet, rod

## Environmental conditions

Ambient temperature -40...100 °C  
Storage temperature -40...100 °C

## Material

Housing material Aluminium

## Mechanical data

Application weight 12.00 g  
Dimension  $\varnothing 32 \times 8$  mm  
Inside diameter 13.0 mm  
Mounting part Through-hole 4.3 mm (2x)  
Pressure rating max. 600 bar