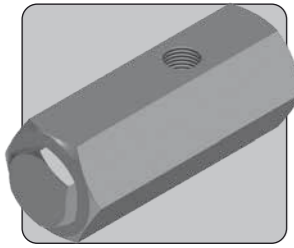


# RL25 RELIEF VALVE

**1/4" UP TO 1,379 BAR 20,000 PSI**



The RL25 is a 1/4" ported relief valve. Designed for emergency relief applications, it may be used to protect systems up to 1,379 bar (20,000 psi).

The valve is a proportional metering style relief valve, and is approved as a safety accessory to category IV of the Pressure Equipment Directive, enabling its use in the most demanding applications.

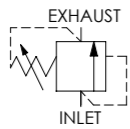
- Approved to category IV of the Pressure Equipment Directive (2014/68/EU)
- Available preset via internal adjustment or with an external handwheel adjustment option
- Wire locking and tagging available on request
- Minimal leakage at 90% of set pressure
- Reseat within 20% of set pressure
- Repeatably within ±5% of set pressure
- Suitable for subsea use (excluding handwheel version)
- Suitable for use with mineral oils and water glycols, with options for water and sea water duty
- Suitable for many other media, contact us for advice
- Available in many other materials

## Specifications

**BASIC MODEL NUMBER**

**RL25**

**SYMBOL**



**MAX WORKING PRESSURE**

1,379 bar  
(20,000 psi)

**MAX OUTLET PORT PRESSURE**

69 bar  
(1,000 psi)  
*Note: Any outlet port pressure is directly additive to the set pressure*

**ORIFICE SIZE**

1.6k/4k/9k/15k: Ø3.2mm (Ø0.125")  
20k: Ø2.7mm (Ø0.108")

**FLUID**

Liquids only  
*See materials section*

**TEMPERATURE RANGE**

*See Product Selector opposite and Technical Data section*

**PORT SIZE**

1/4"

**WEIGHT**

0.9 kg  
(2.0 lb)

*Specifications may change without notice*

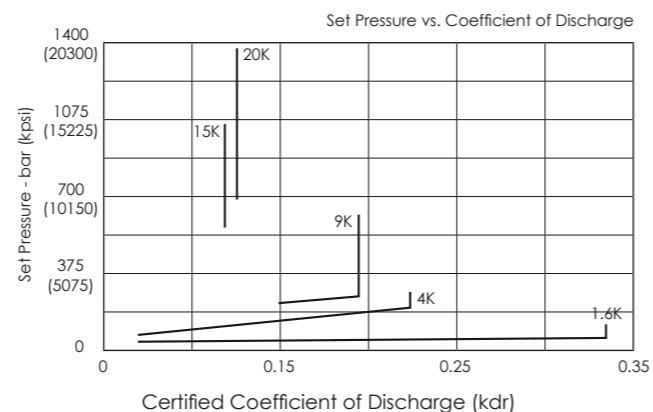
## Materials

Externally Exposed Parts: 316 stainless steel. The handwheel version contains other 300 series stainless steels.

Internally Wetted Parts: 316 and 302 stainless steel. The seat and ball are 440C stainless steel and silicon nitride respectively. The water duty version contains a 17-4 PH stainless steel seat. The sea water duty valve uses only 316 stainless steel, inconel and silicon nitride in wetted areas. Note that use with water above 100°C is not recommended.

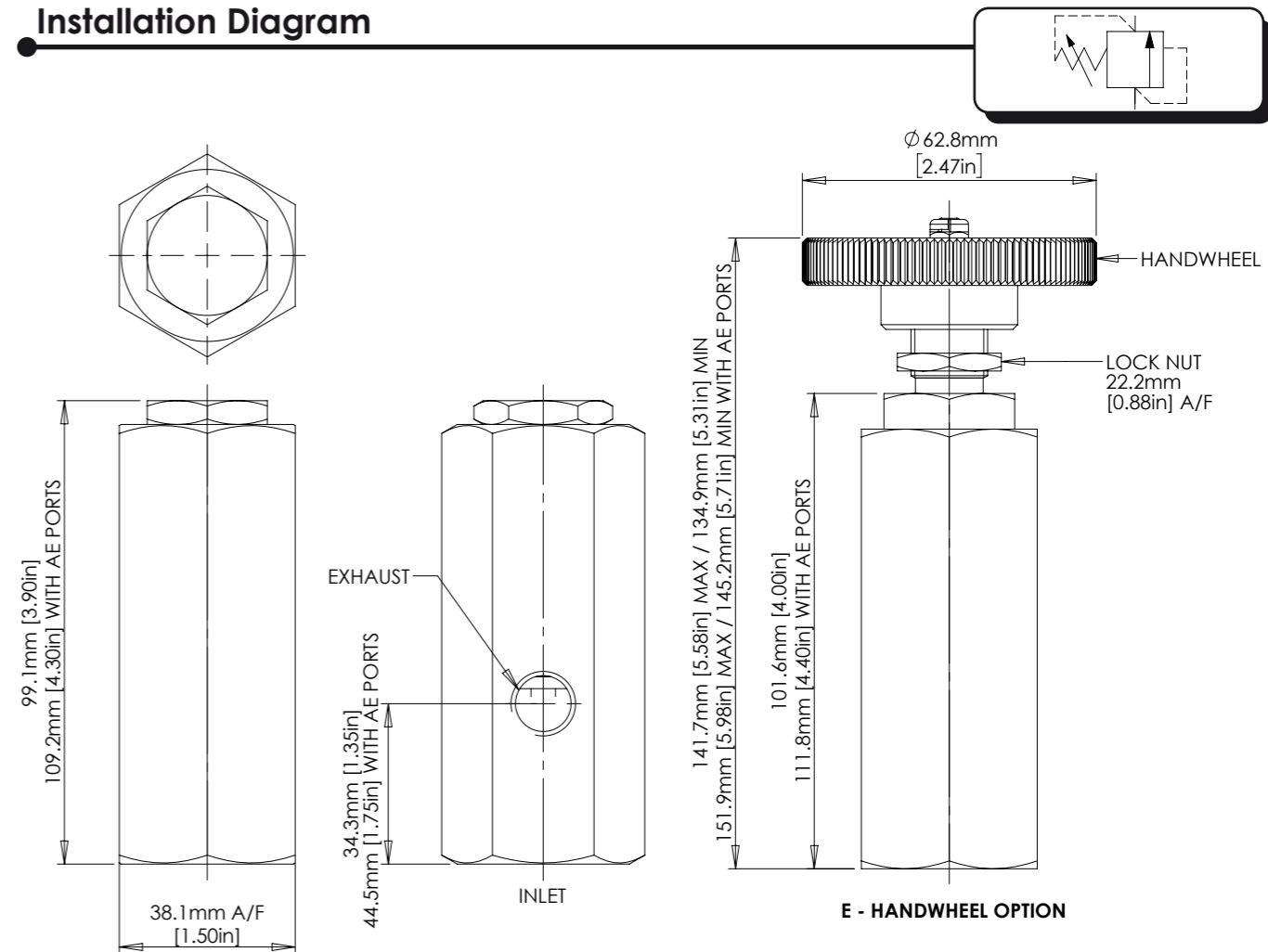
⚠ The standard valve has Viton® seals. Further seal options are available via the Product Selector. Compatibility with the working fluid at the operating temperature must be considered.

## Typical Performance



The kdr value may be used to calculate discharge capacity in accordance with ISO 4126. We recommend contacting us with system details to confirm suitability.

## Installation Diagram



## Product Selector

**RL25 - 44AE - 25P - E - WD - NBR - 1.6K**

VALVE TYPE	INLET PORT OPTIONS	EXHAUST PORT OPTIONS	VALVE OPTIONS	WORKING FLUID OPTIONS	SEAL OPTIONS	SET PRESSURE RANGE
<b>RL25</b>	<b>P</b> 1/4" BSPP female inlet and exhaust Max 1034 bar (15,000psi)	<b>25P</b> 1/4" BSPP female exhaust	<b>E</b> Handwheel (external) adjustment	<b>WD</b> Water duty	<b>NBR</b> Nitrile seals -30°C to +105°C	<b>1.6K</b> 28 - 110 bar (400 - 1,600 psi)
	<b>N</b> 1/4" NPT female inlet and exhaust Max 1034 bar (15,000psi)	<b>25N</b> 1/4" NPT female exhaust	⚠ Exposure to high and low fluid temperatures will influence handle temperature. Operator safety must be considered	<b>SWD</b> Sea water duty	<b>KLZ</b> Kalrez® seals -25°C to +200°C	<b>4K</b> 69 - 276 bar (1,000 - 4,000 psi)
	<b>44AE</b> 1/4" OD medium pressure tube inlet		Further adjustment options are available on request		<b>HNBR</b> Hydrogenated Nitrile seals -20°C to +150°C	<b>9K</b> 207 - 621 bar (3,000 - 9,000 psi)
	<b>56AE</b> 3/8" OD medium pressure tube inlet				Further seal options are available on request	<b>15K</b> 552 - 1,034 bar (8,000 - 15,000 psi)
	<b>81AE</b> 9/16" OD medium pressure tube inlet					<b>20K</b> 690 - 1,379 bar (10,000 - 20,000 psi) Not suitable for P BSP or N NPT inlet ports Advise us of set pressure if factory pre-setting is required

SOLENOID  
FLOW CONTROL  
3 PORT DIRECTIONAL CONTROL  
4 PORT DIRECTIONAL CONTROL  
CHECK AND SHUTTLE  
PILOT OPERATED CHECK  
RELIEF  
EXCESS FLOW  
FILTERS  
PRESSURE SENSING  
PUMPS  
ACTUATORS  
TECHNICAL DATA