

# Dual counterbalance, relief compensated

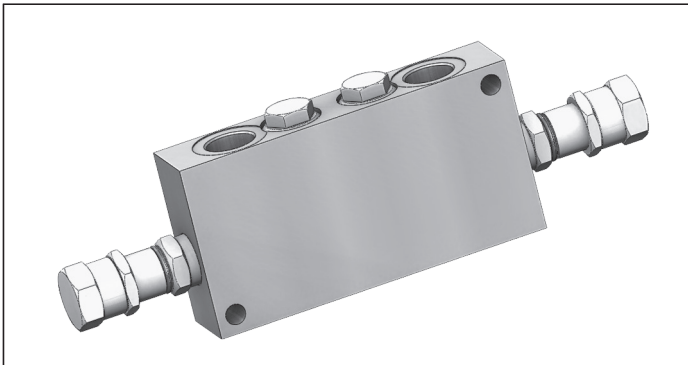
A-VBSO-DE-CC

08.42.05 - X - Y - Z

**RE 18307-69**

Edition: 03.2016

Replaces: 10.2009



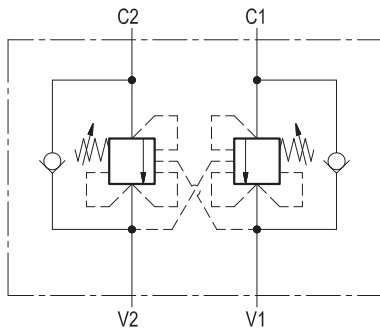
### Technical data

Max. operating pressure	350 bar (5000 psi)
Max. flow	see performance graph
Weight	4.5 kg (9.9 lbs)
Manifold material	Zinc plated steel
Fluid	Mineral oil (HL, HLP) according DIN 51524
Fluid temperature range	-30 °C to 100 (-22 to 212 °F)
Viscosity range	5 to 800 mm <sup>2</sup> /s (cSt)
Recommended degree of fluid contamination	Class 19/17/14 according to ISO 4406
Other technical data	see data sheet 18350-50

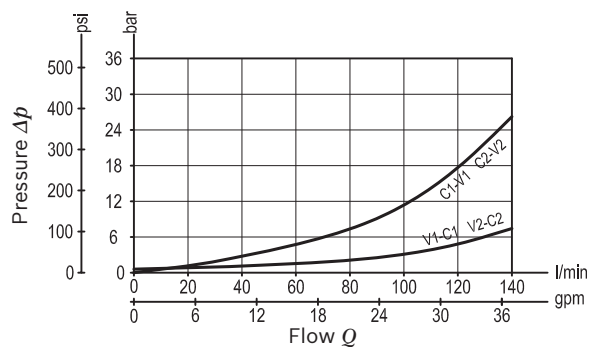
Note: for applications outside these parameters, please consult us.

### Description

It provides static and dynamic control of load by regulating the flow IN and OUT of the actuator, through ports C1 and C2. This valve module includes 2 sections, each one composed by a check and a relief valve with balanced piston, pilot assisted by pressure in the opposite line: the check section allows free flow into the actuator, then holds the load against reverse movement; with pilot pressure applied at the line across, the pressure setting of the relief is reduced in proportion to the stated ratio until opening and allowing controlled reverse flow. Relief operates at the valve setting independent of back-pressure, but the piloted opening remains subject to additive pressure at V1 or V2.



### Characteristic curve



**Ordering code**

<b>08.42.05</b>	<b>X</b>	<b>Y</b>	<b>Z</b>
-----------------	----------	----------	----------

Dual counterbalance,  
relief compensated

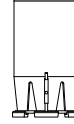
Pilot ratio

**02** 8.2 : 1

Port sizes	V1 - V2	C1 - C2	
<b>04</b>	G 3/4	G 3/4	

SPRINGS			
	Adj. pressure range bar (psi)	Pres. increase bar/turn (psi/turn)	Std. setting Q=5 (l/min) bar (psi)
<b>35</b>	100-350 (1450-5000)	95 (1378)	350 (5000)

Tamper resistant cap code  
ordering code 03.05.01.001  
Mat. no. R930000470



**Preferred types**

Type	Material number
084205020435000	R930001126

Type	Material number

**Dimensions**

